

ECKWERK HOLZMARKT

Kleihues + Kleihues × Graft

Abschlusspräsentation

Genossenschaft für urbane Kreativität eG

Projektnummer | 602

Datum | 140425



I. Workshop

1. Beschreibung Prozess

II. Städtebau

1. Augenblickliche Situation
2. Einbindung in das Umfeld
3. Gegenüberstellung von B-Plan und Konzept

III. Gebäude / Konzept

1. Gebäudeelemente
2. Grundrisse Gesamt
3. Grundrisse Türme
4. Querschnitt

IV. Fassadenkonzept / Material

1. Sockel
2. Türme

V. Bergpfad

VI. Entwurf / Visualisierungen

VII. Mitwirkende

I. Workshop

1. Beschreibung - Prozess



GLOBAL WARMING IS HAPPENING. IT IS TIME TO ACT OR LEARN HOW TO SWIM







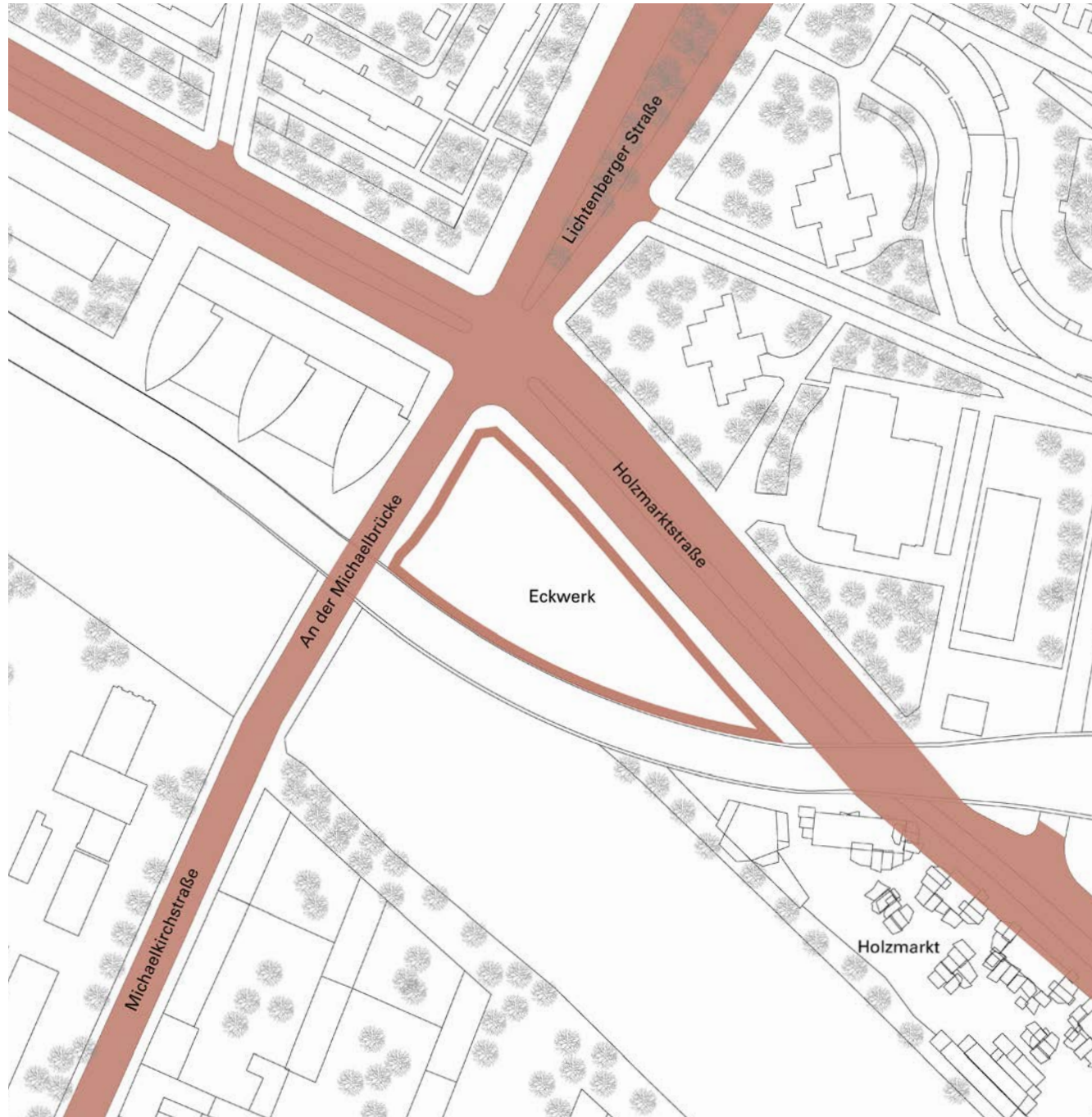


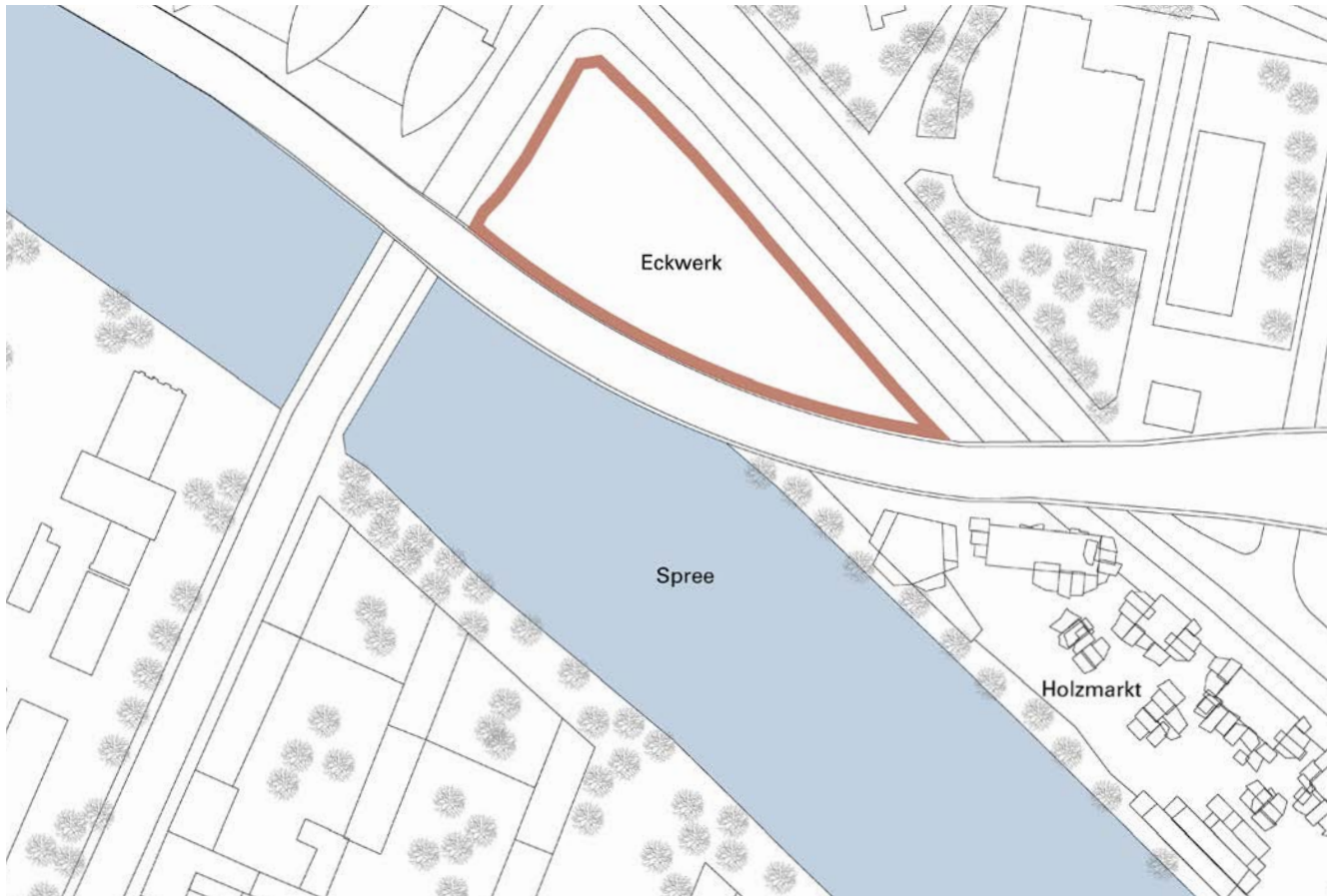


II. Städtebau

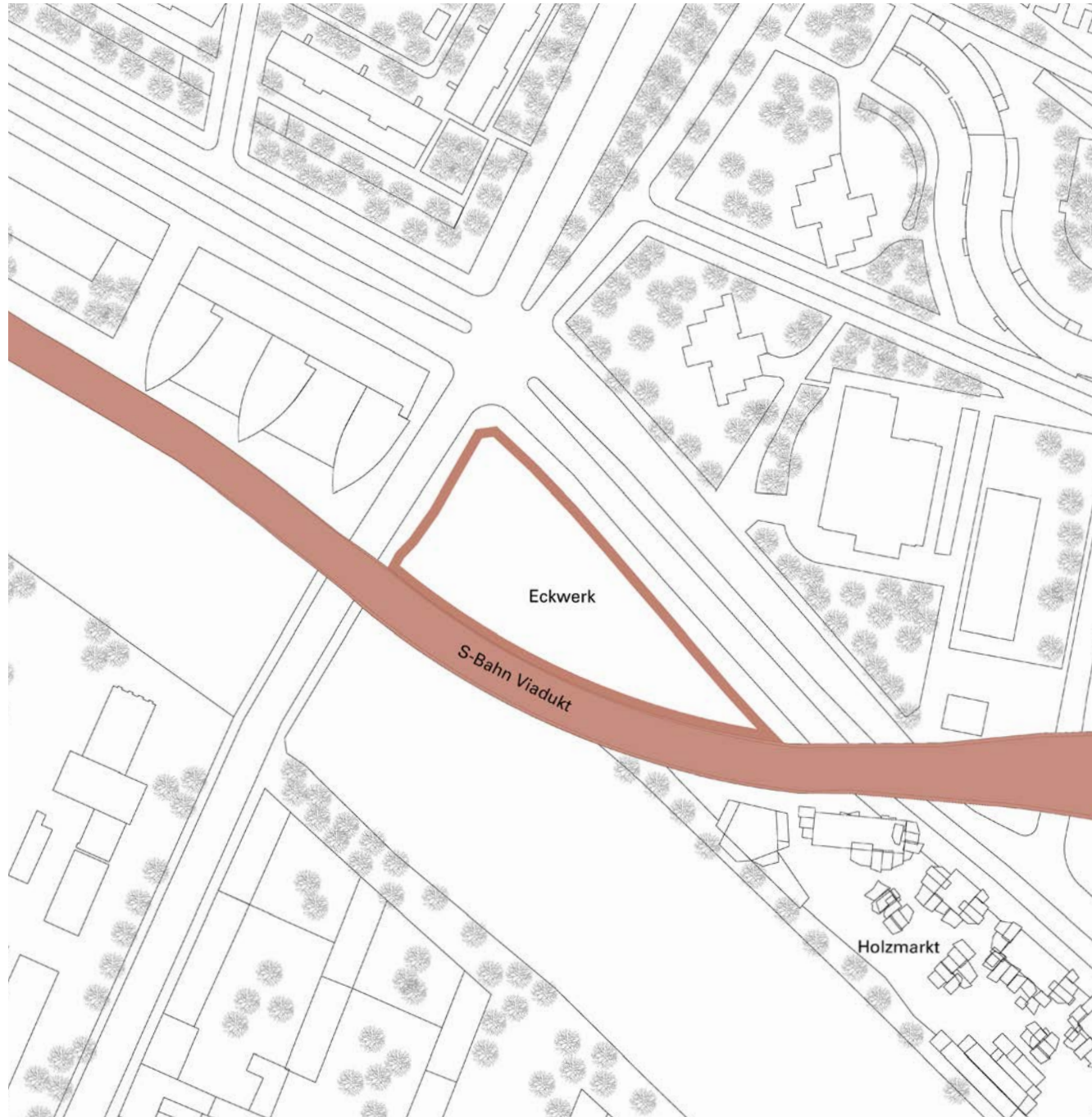
1. Augenblickliche Situation - Verortung
2. Einbindung in das Umfeld
3. Gegenüberstellung von B-Plan und Konzept

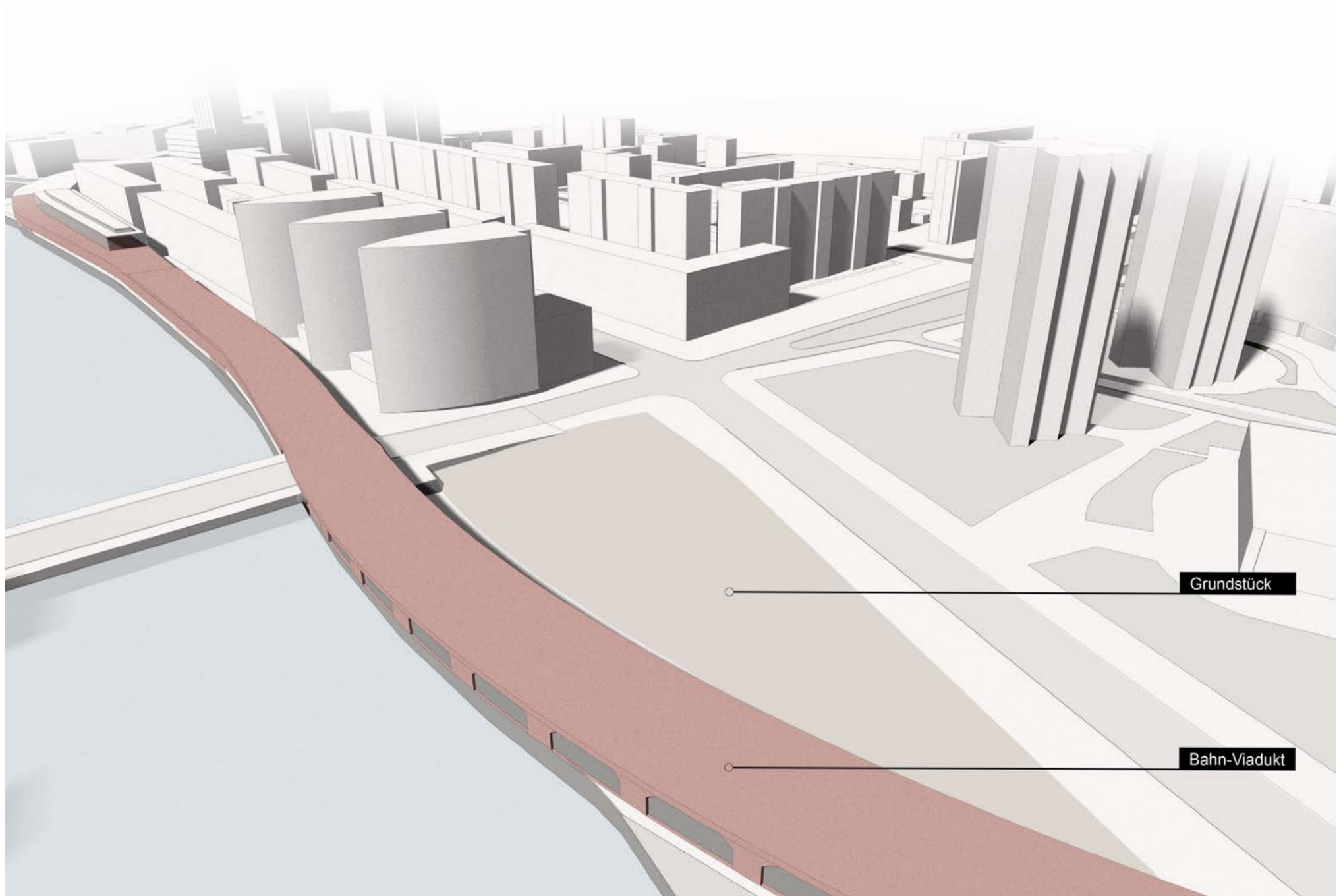


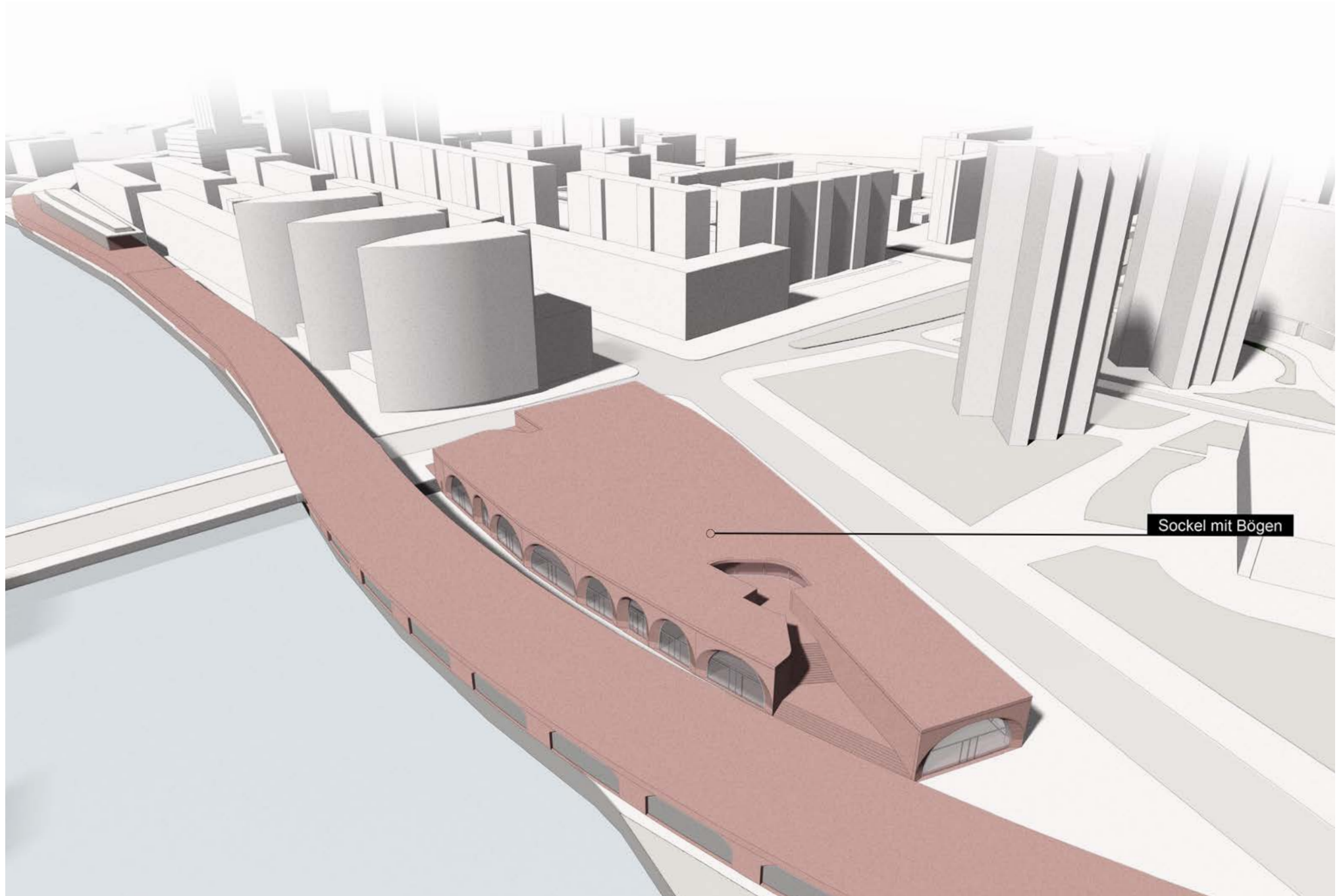


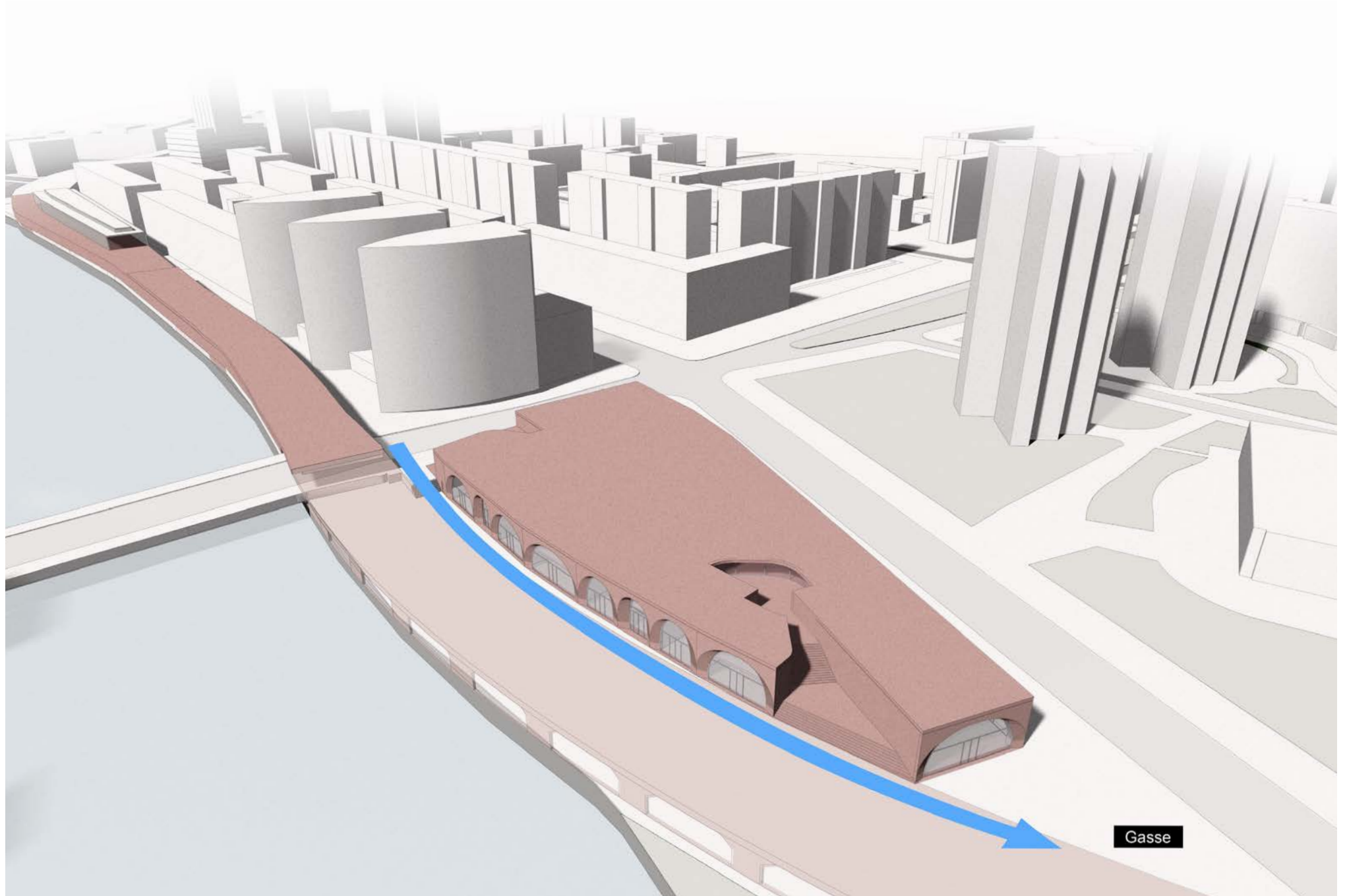


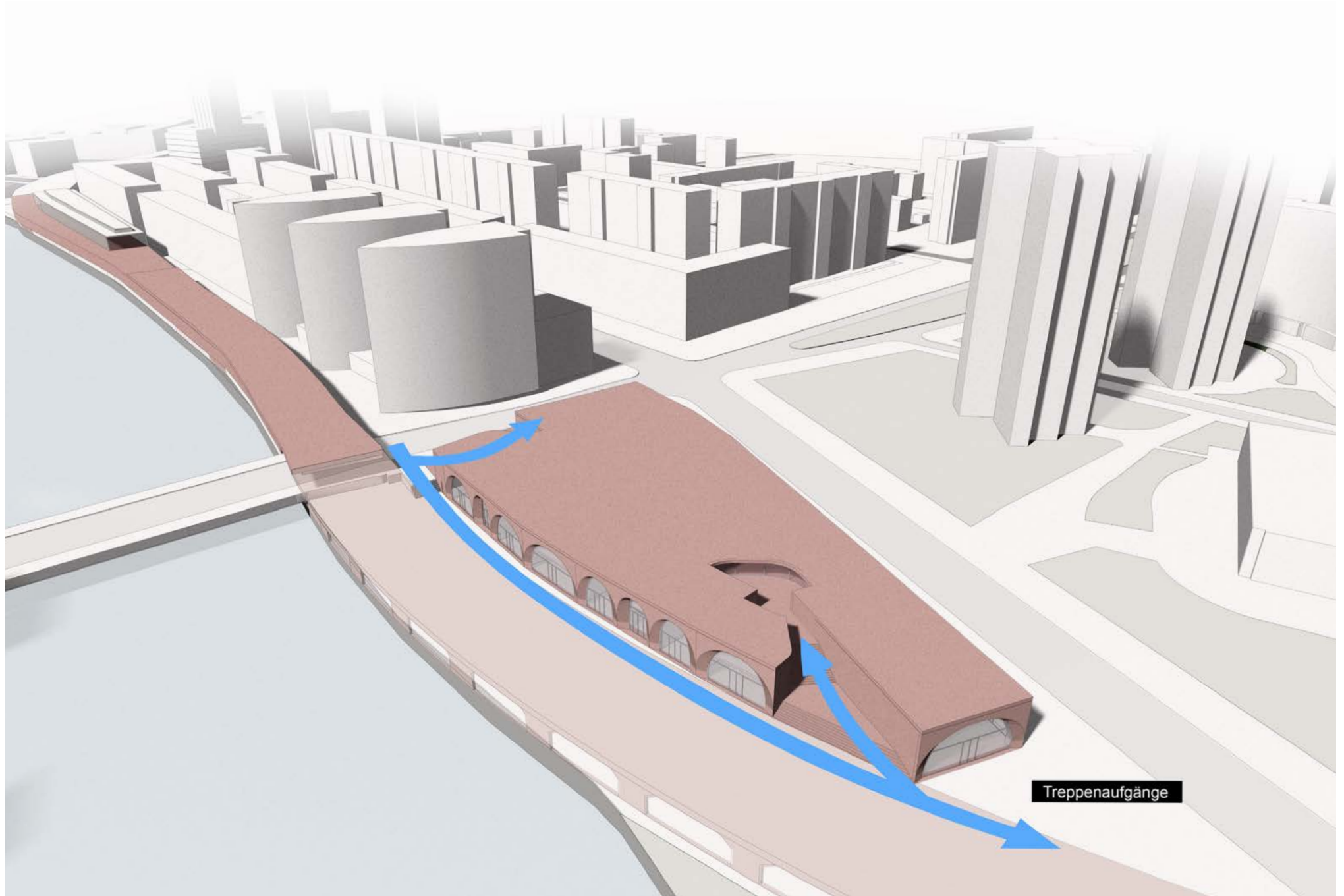


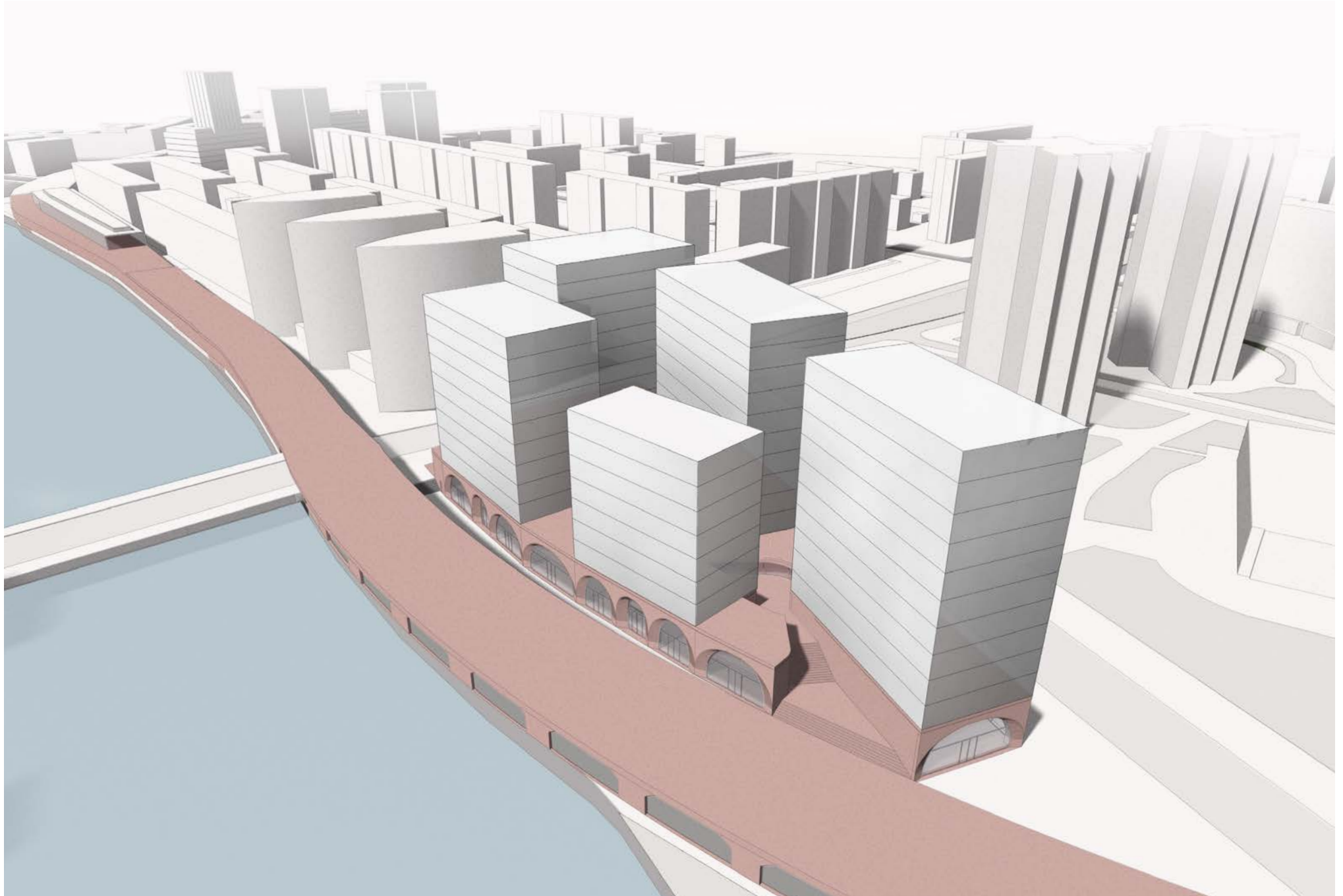


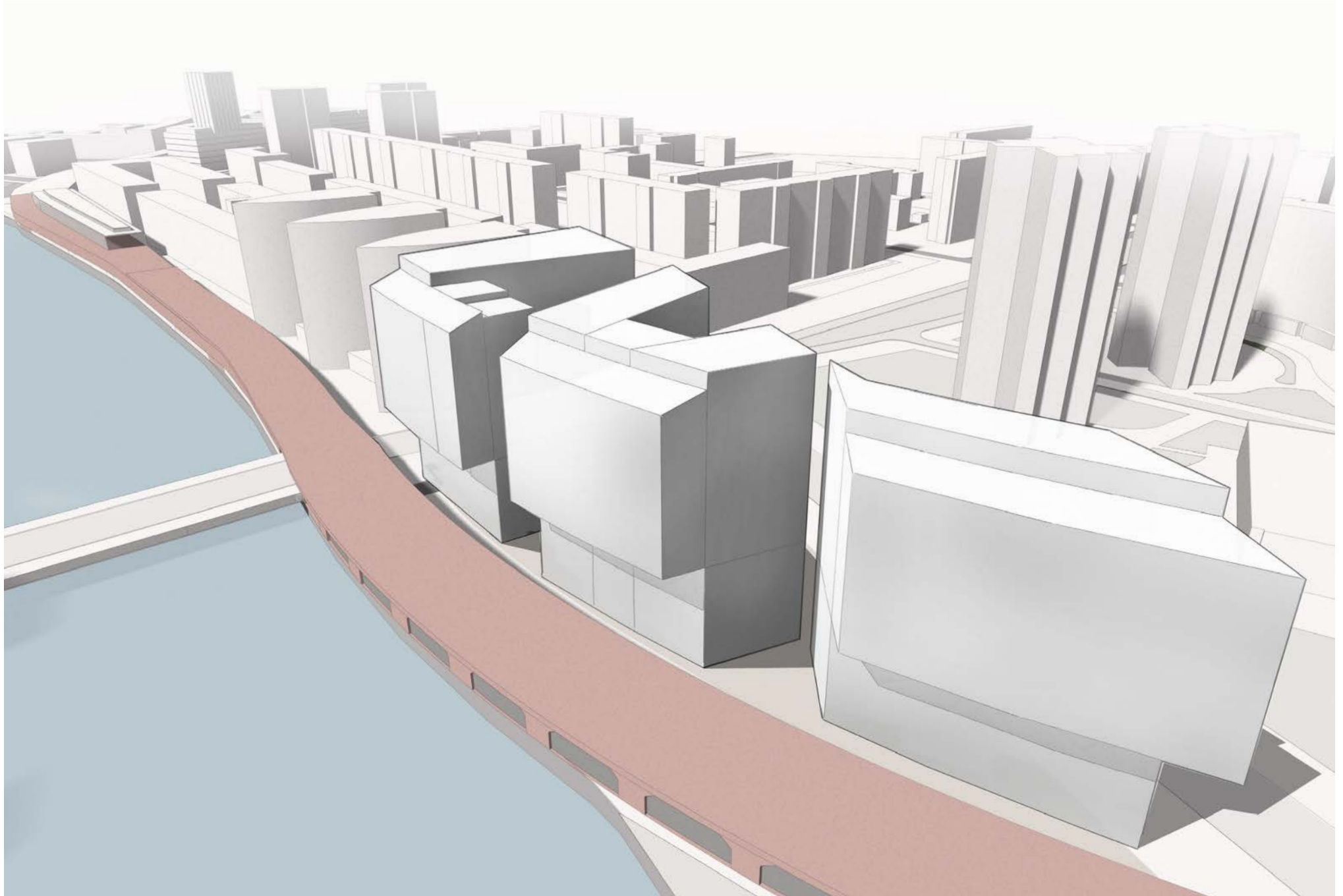


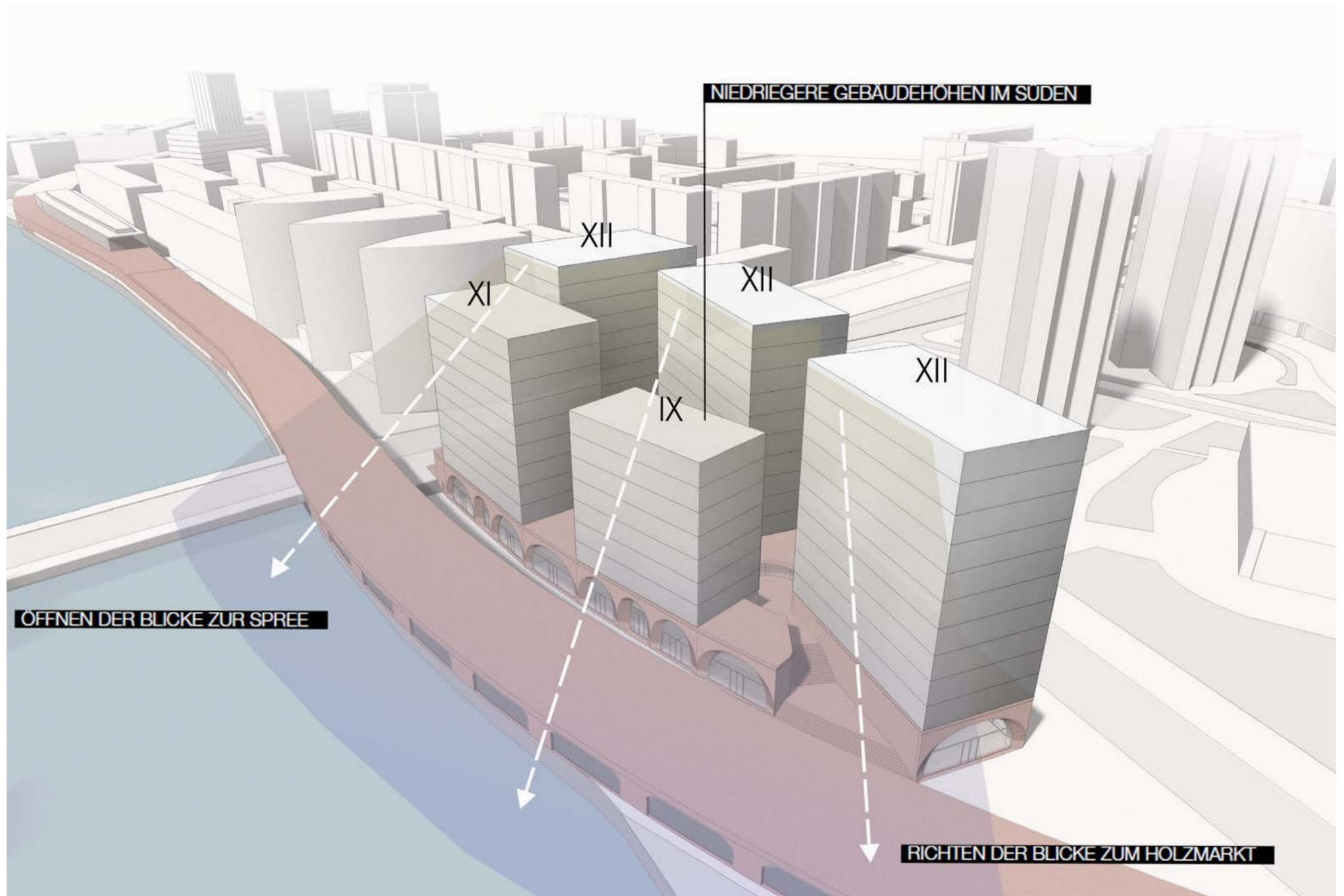






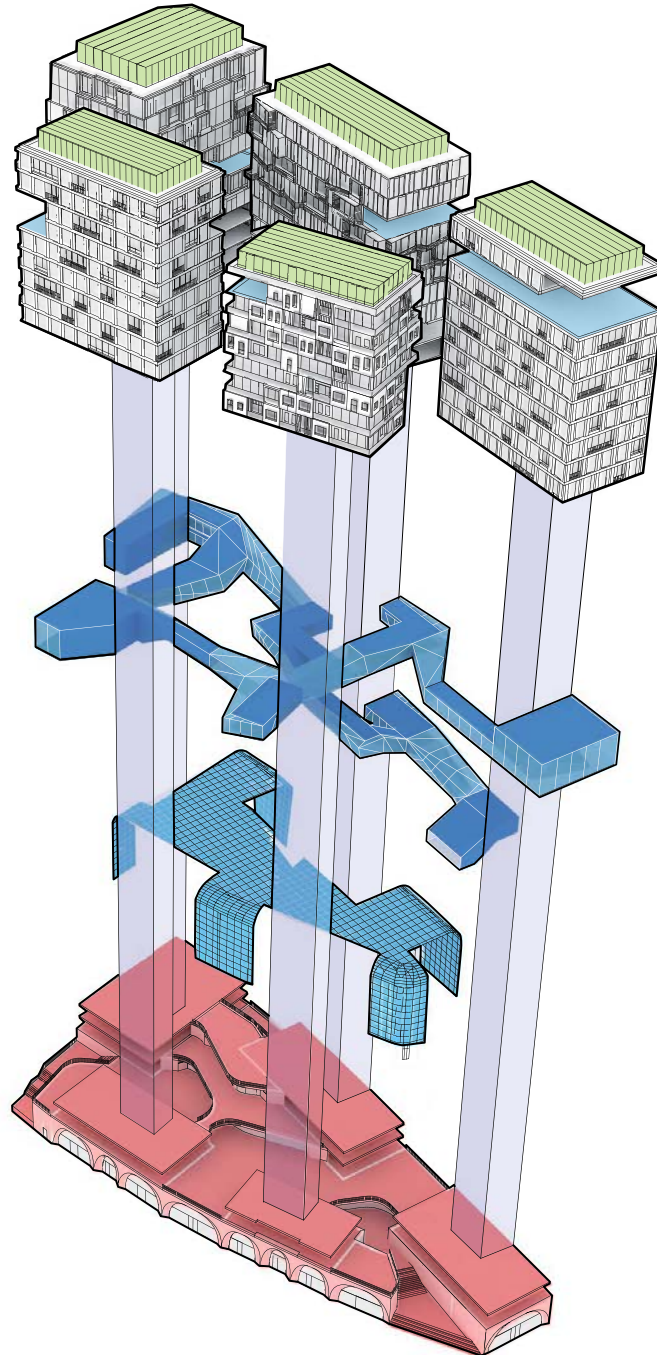






III. Gebäude | Konzept

1. Gebäudeelemente
2. Grundrisse Gesamt
3. Grundrisse Türme
4. Querschnitt



Cinque torri mix residenza lavoro

5 TURME

Flexible Nutzung Wohnen und Arbeiten
Vielschichtige Nutzbarkeit der Fassade
Abtrepung nach Süden zu Spree und Holzmarkt

Il sentiero di Montagna

BERGPFAD

Gliederung in verschiedene Event Bereiche
Verbindung der Türme untereinander
Zugang zu den Gewächshäusern an der Spitze

Serre bioclimatiche

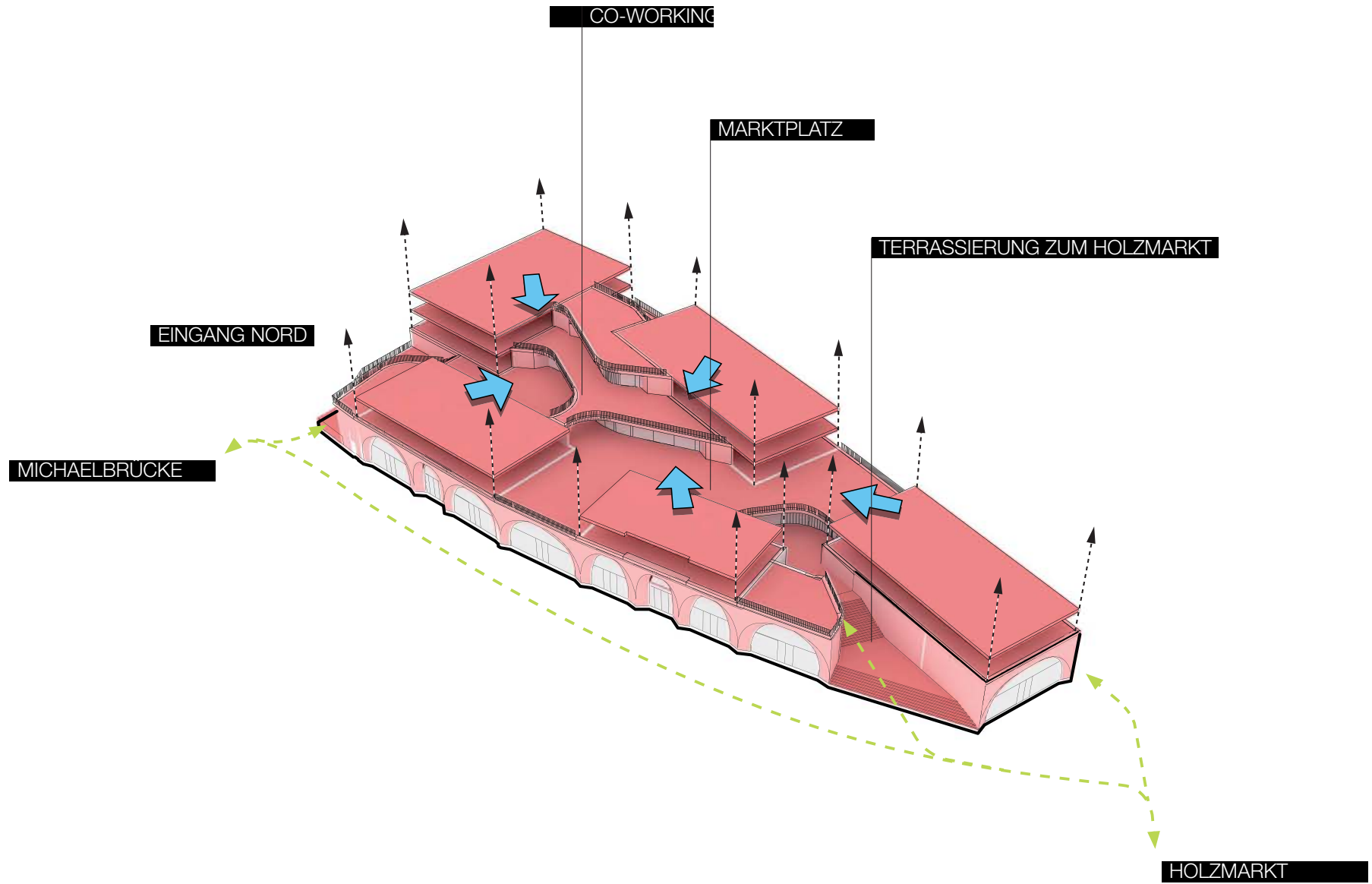
KLIMAHÜLLE

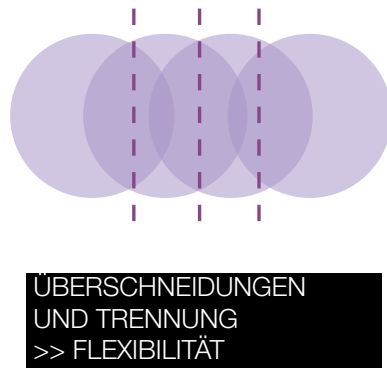
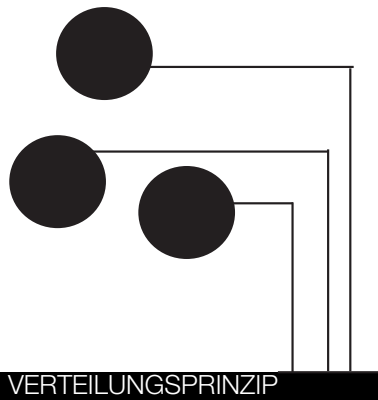
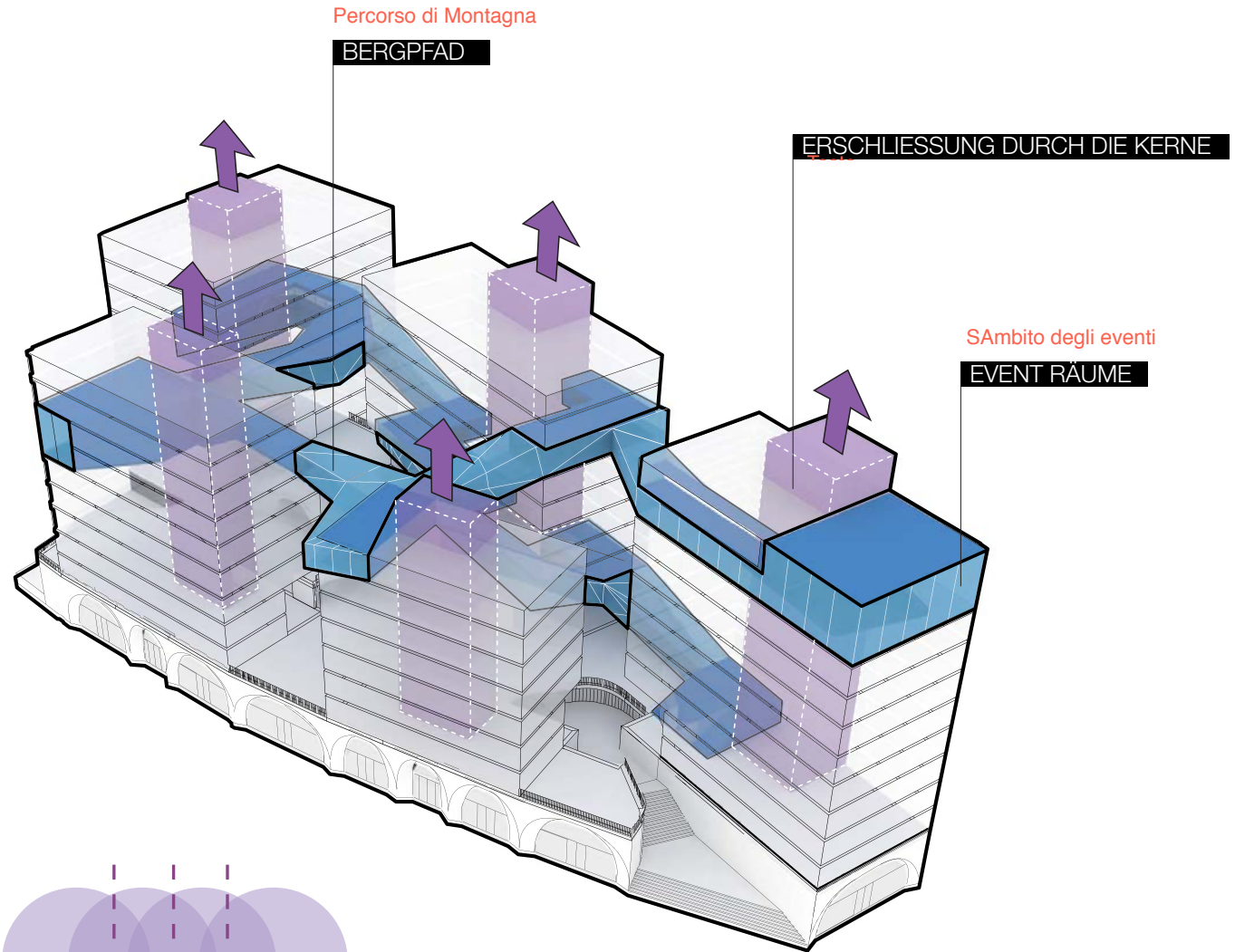
Minimalkonstruktion
Maximierung des Tageslichtes

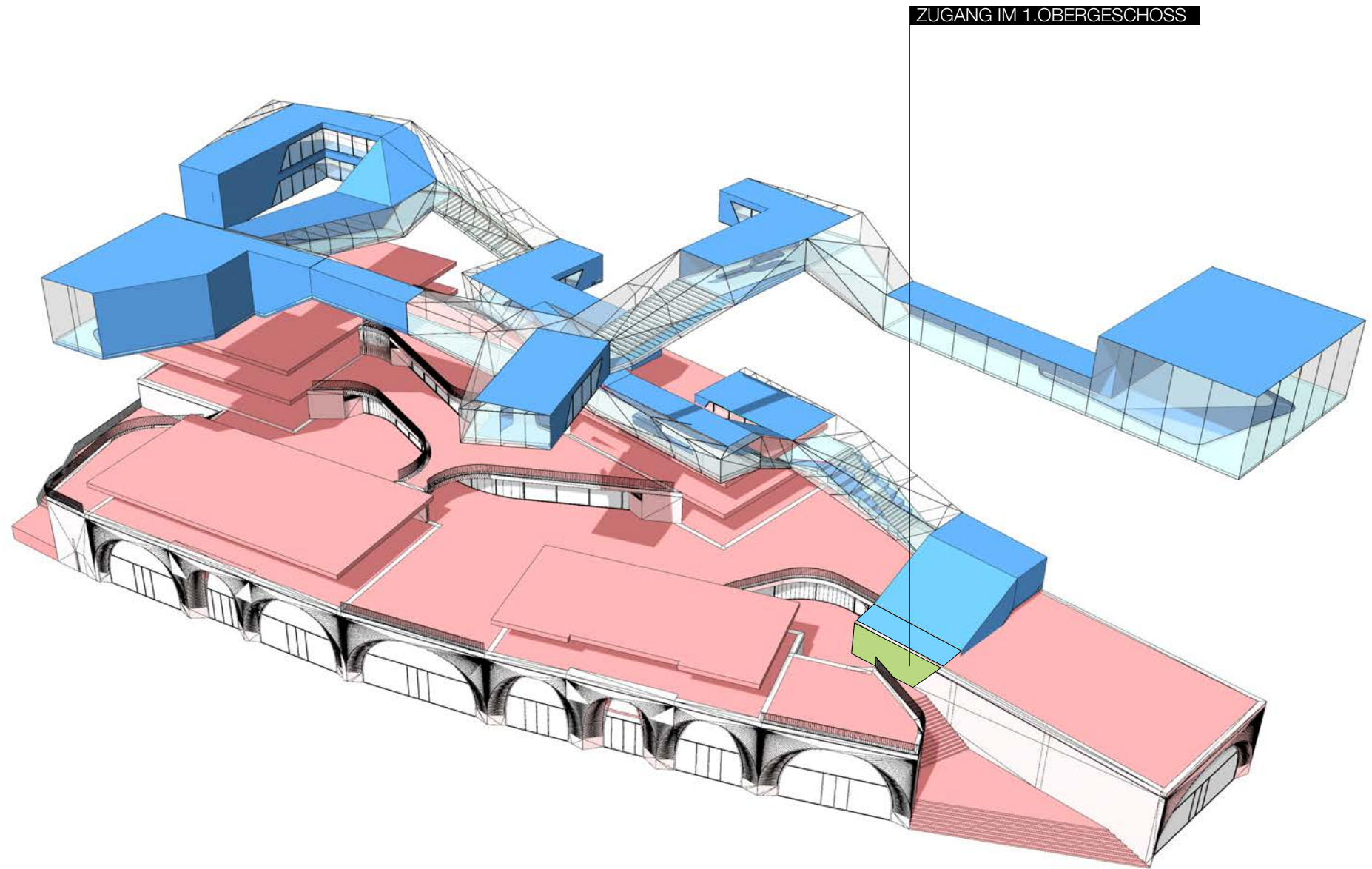
Basamento con terrazze

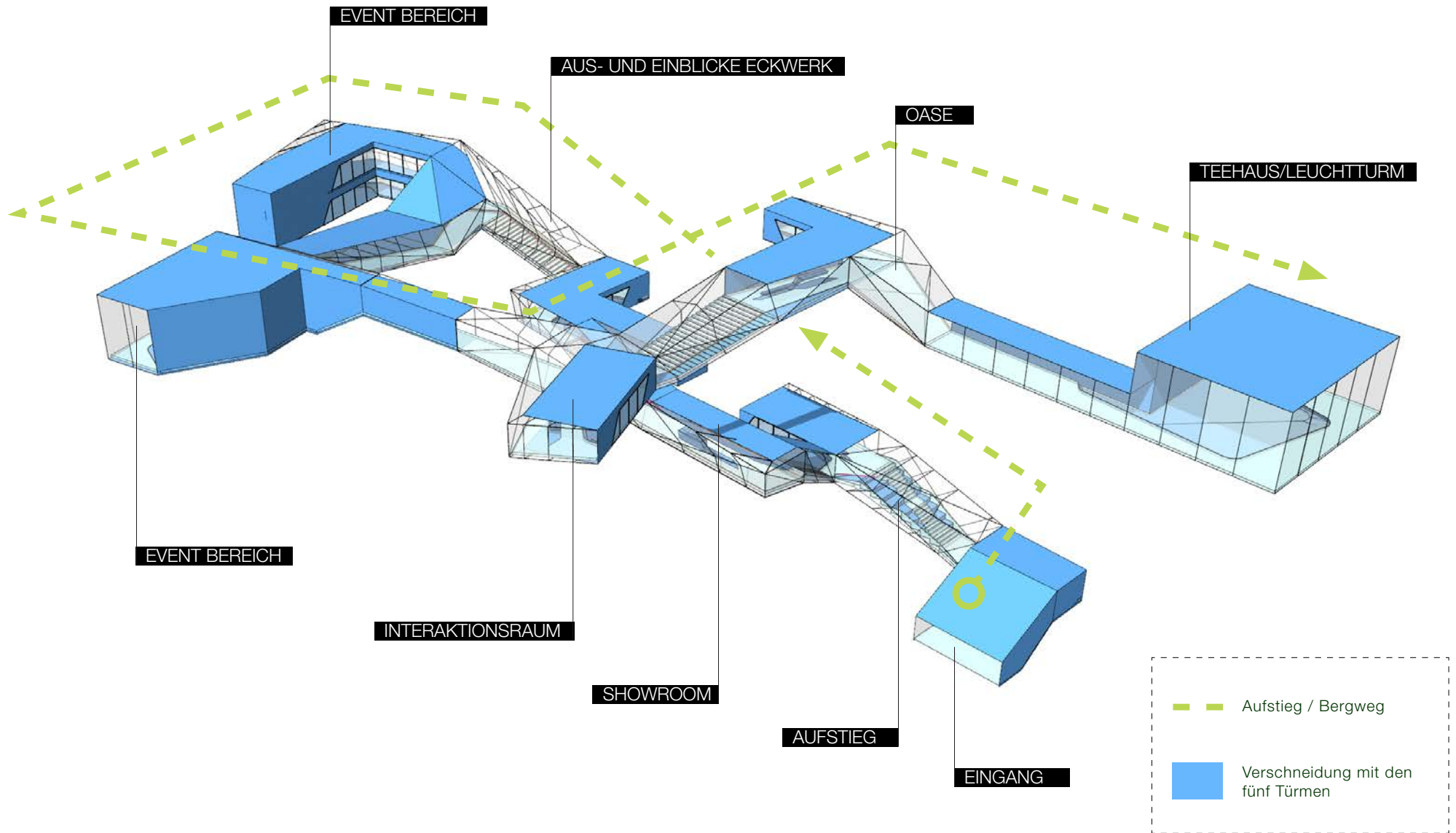
SOCKEL MIT TERRASSEN

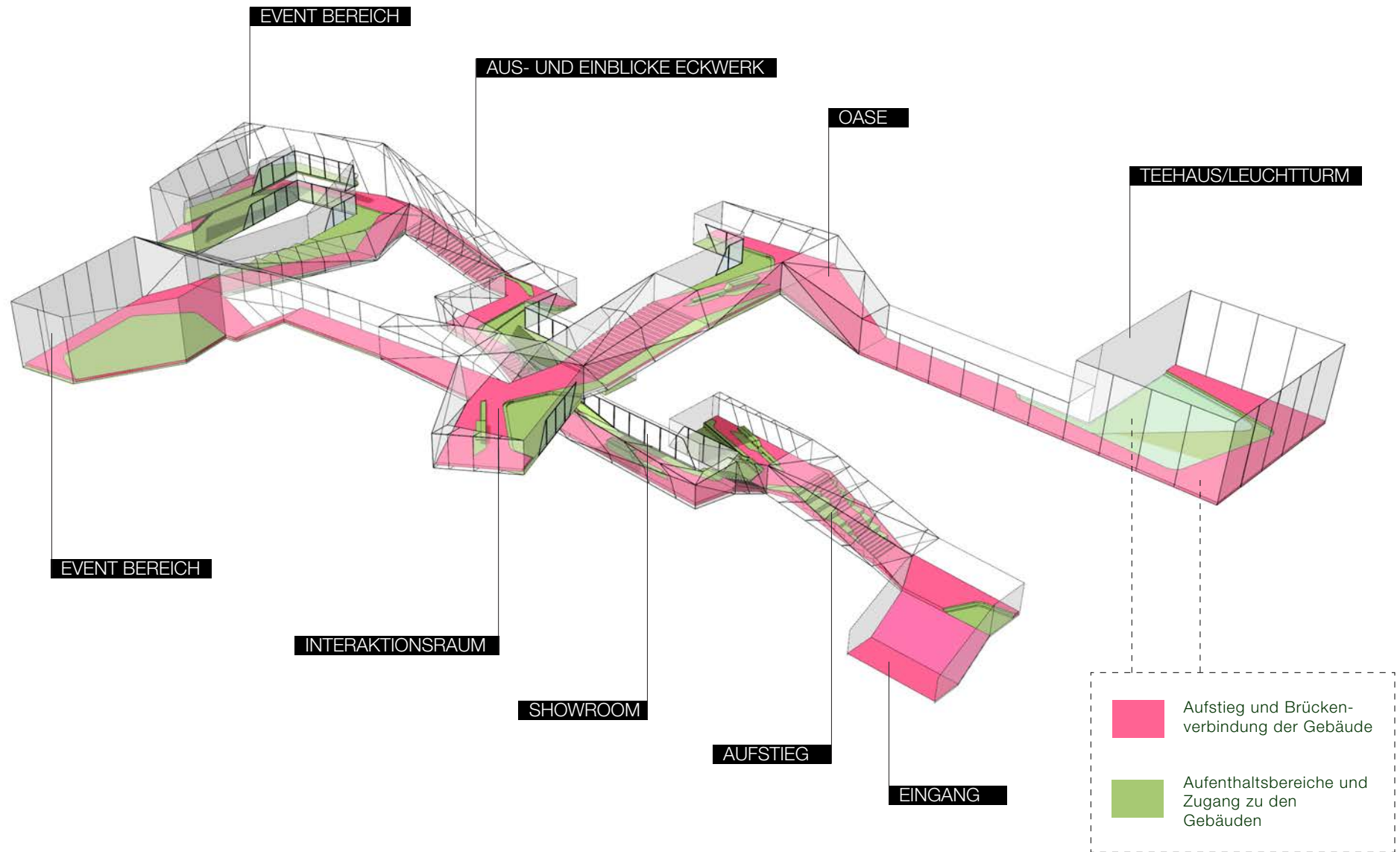
Flexible Nutzung der Terrassen und des Marktplatzes
Möglicher Zusammenschluss und Separation
Zentrales Atrium unter einer Klimahülle

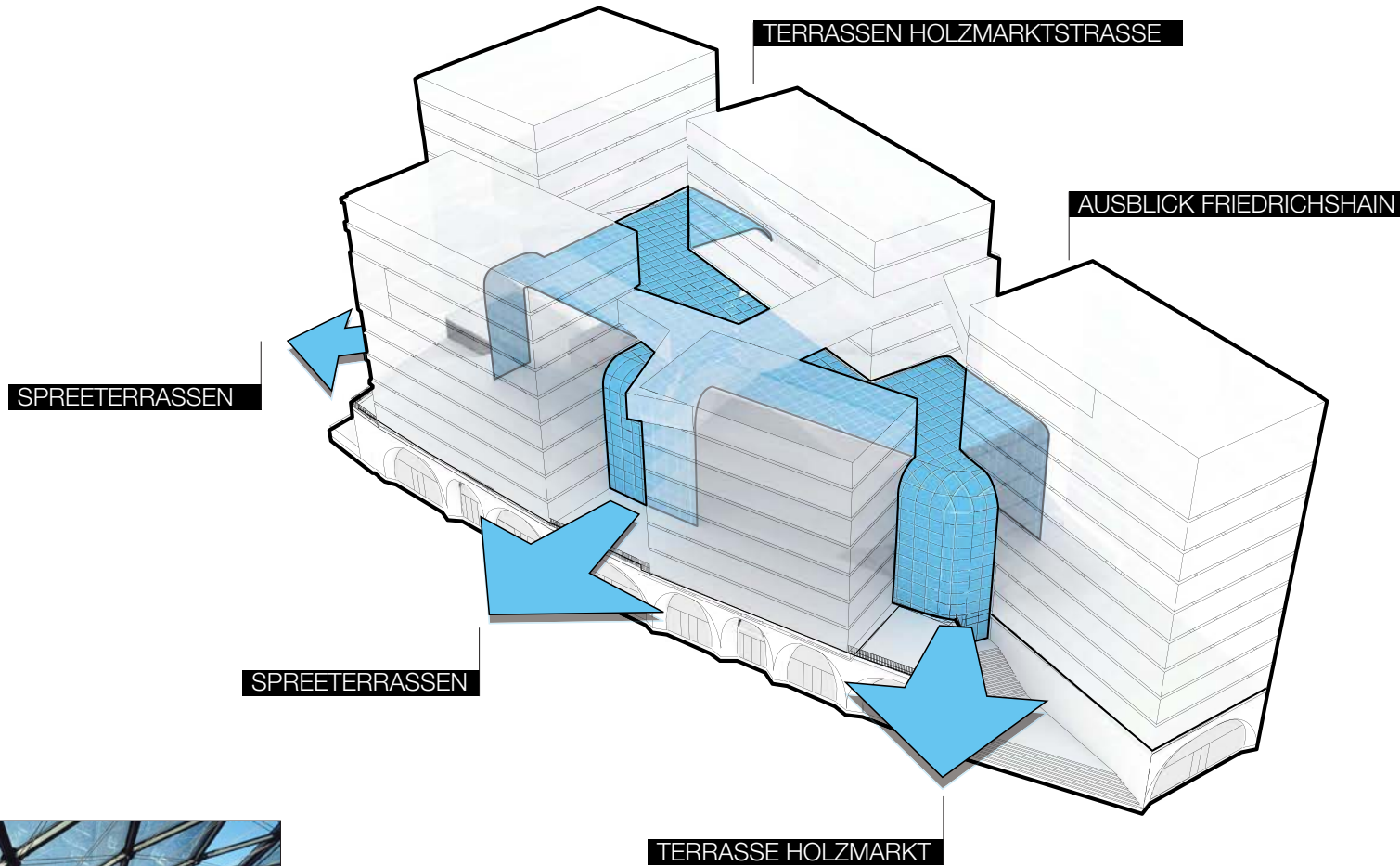








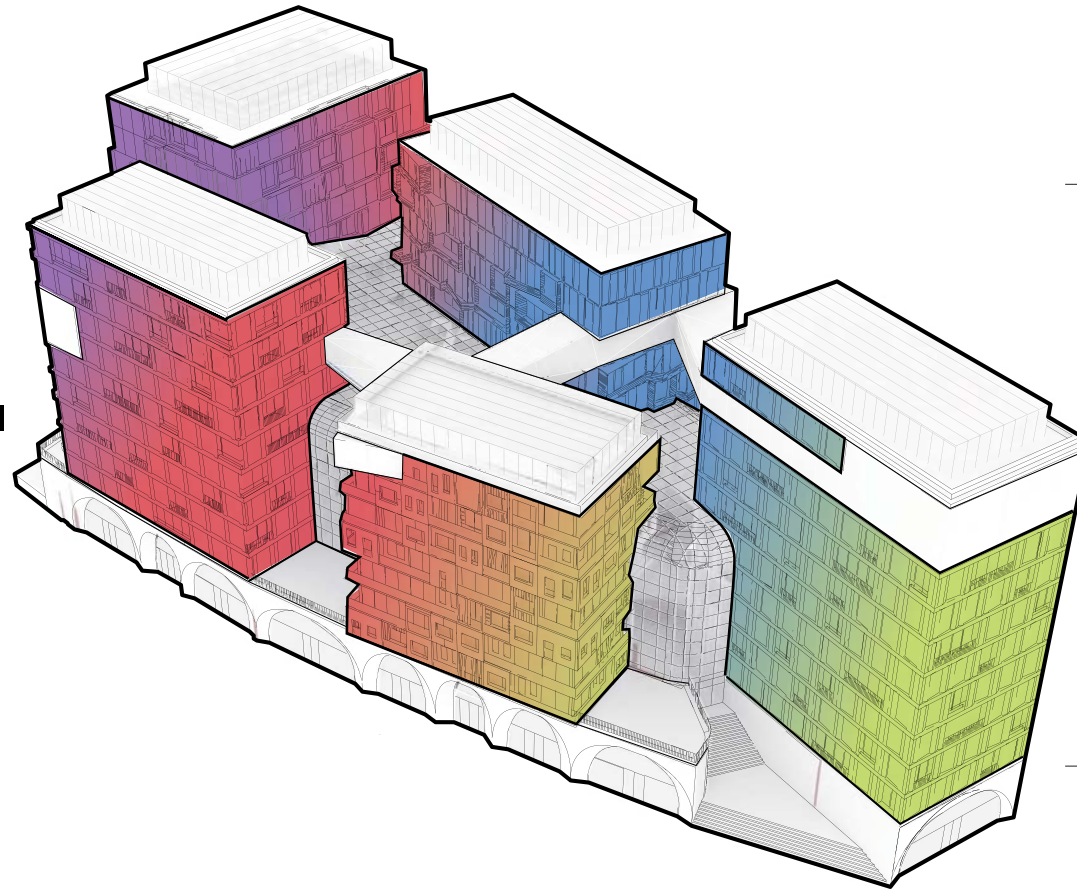




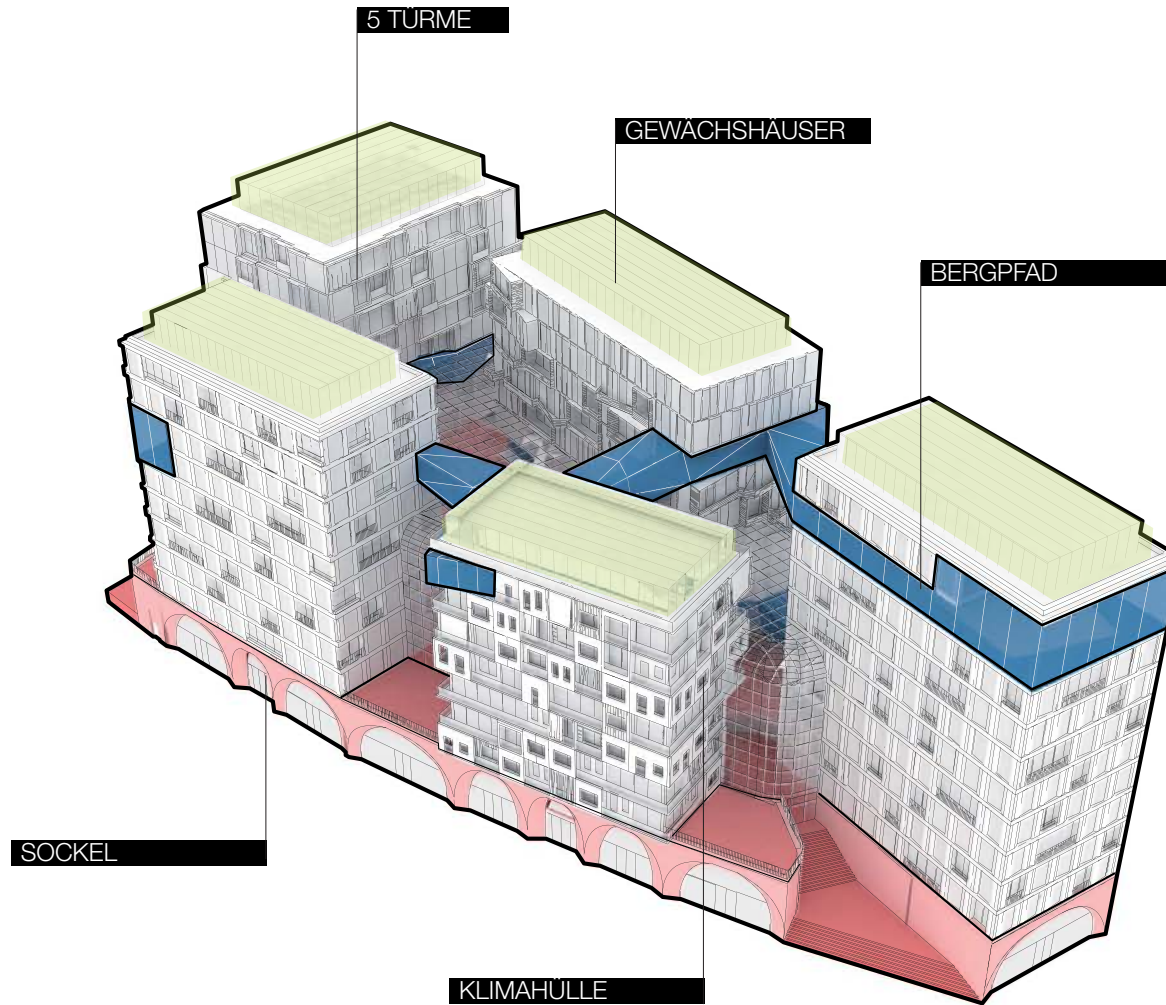
MINIMALE KONSTRUKTION



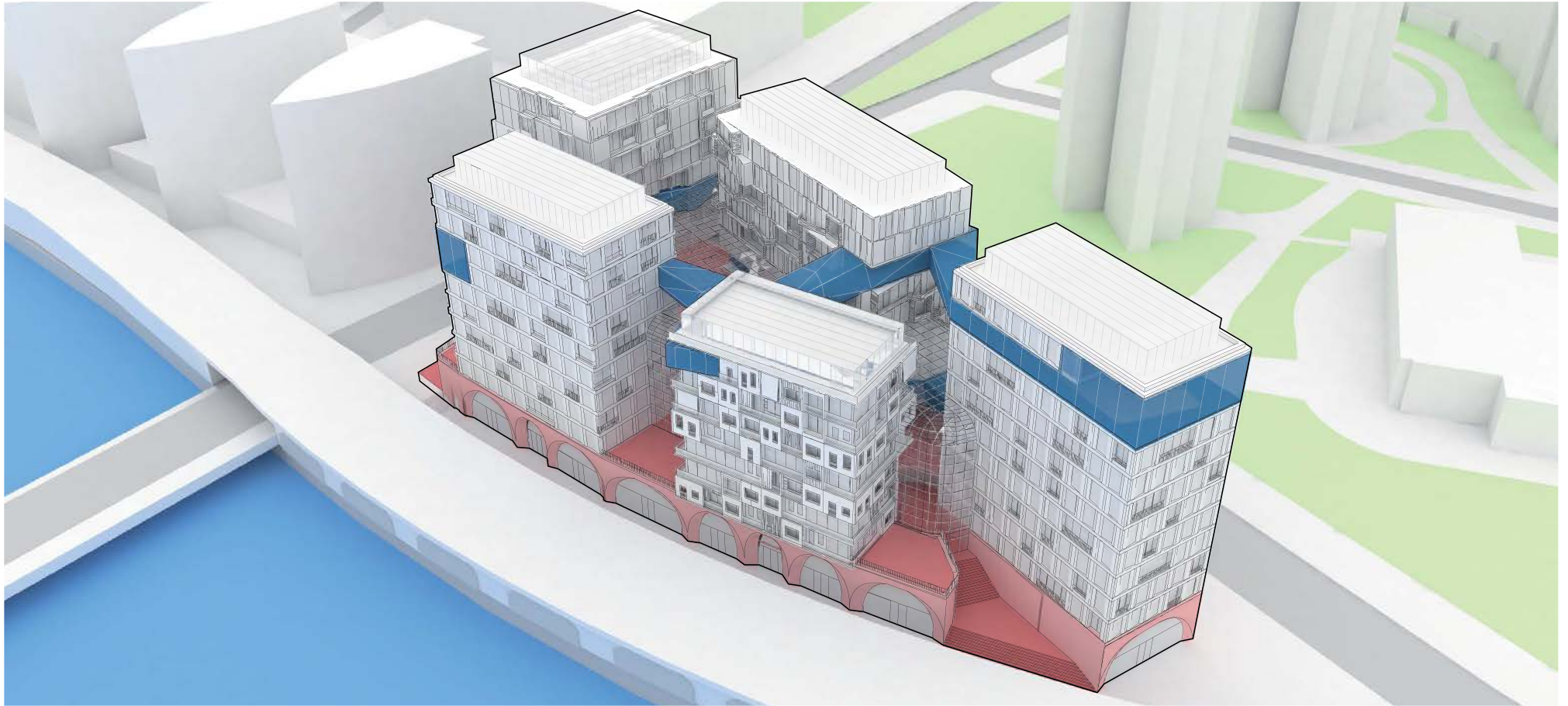
DIVERSITÄT UND FLEXIBILITÄT



5 UNTERSCHIEDLICHE
FASSADENSYSTEME

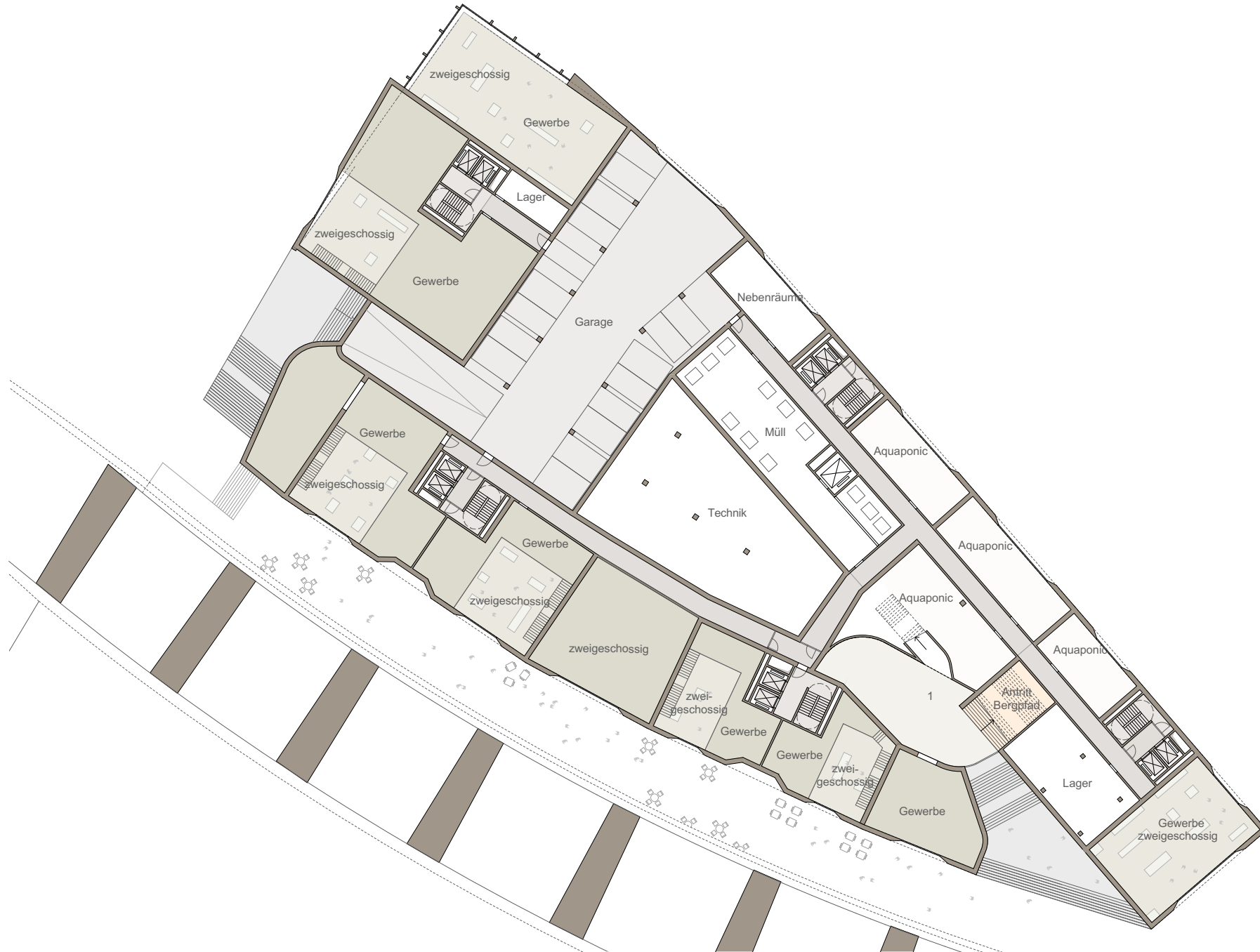






Grundrisse







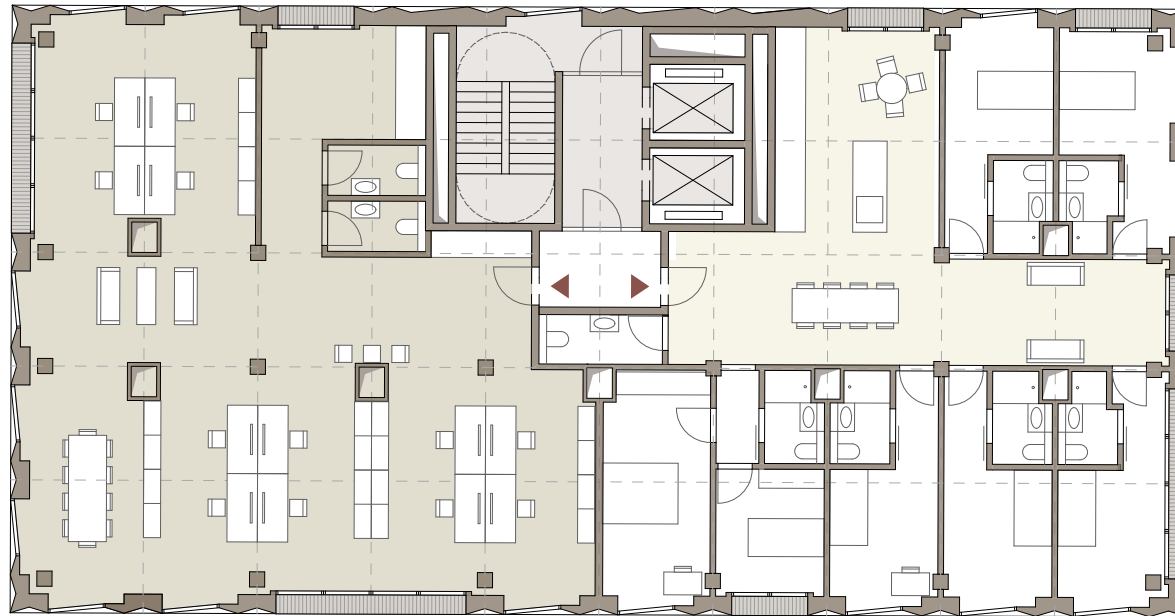


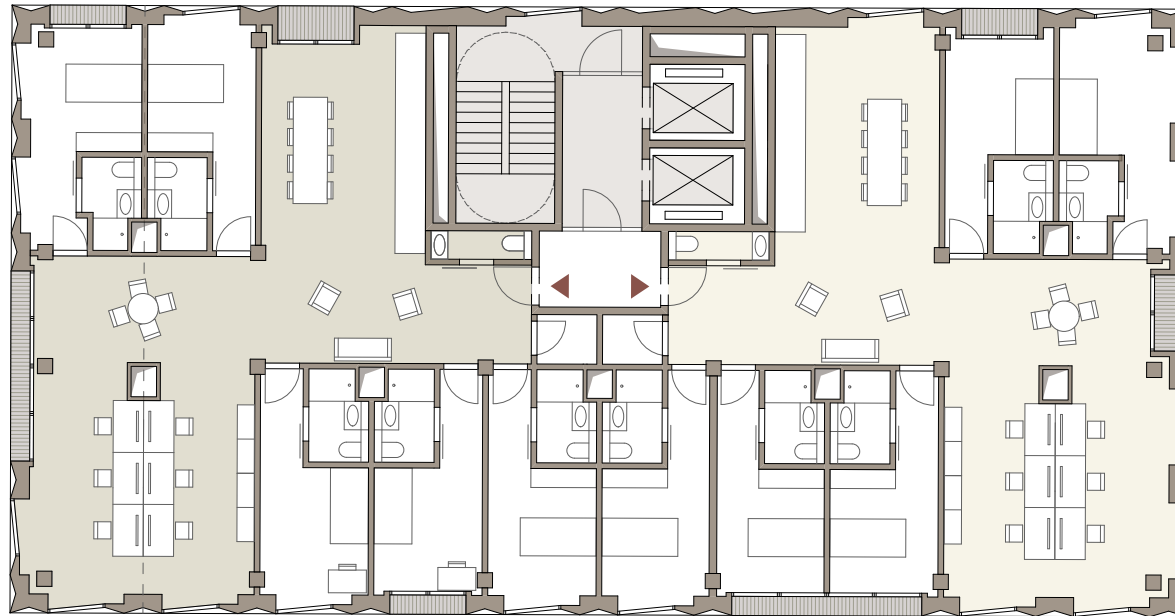


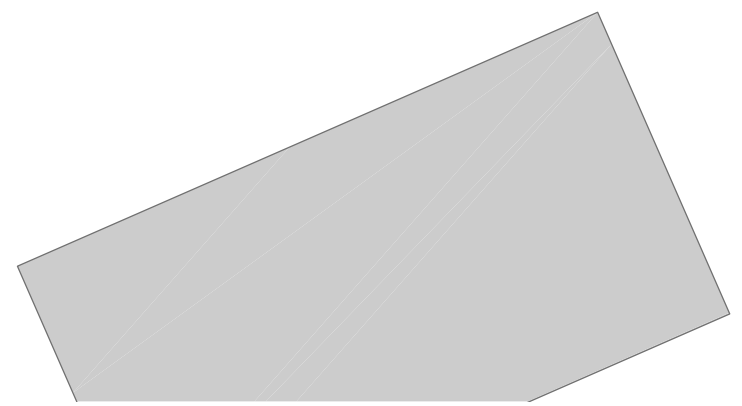
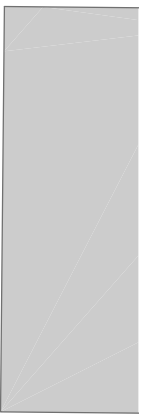
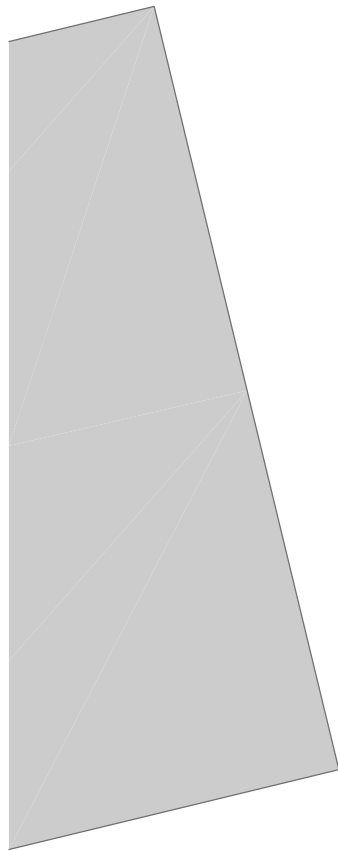
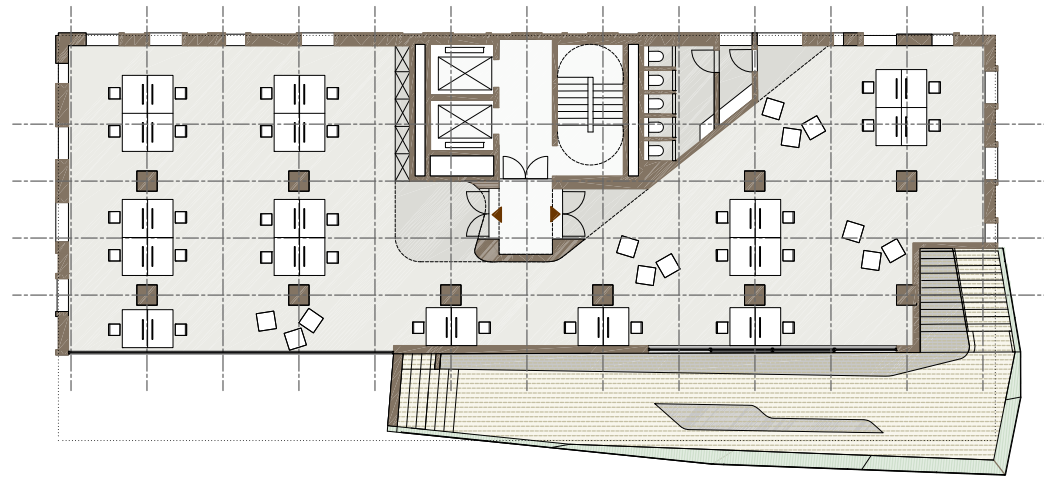
Querschnitt

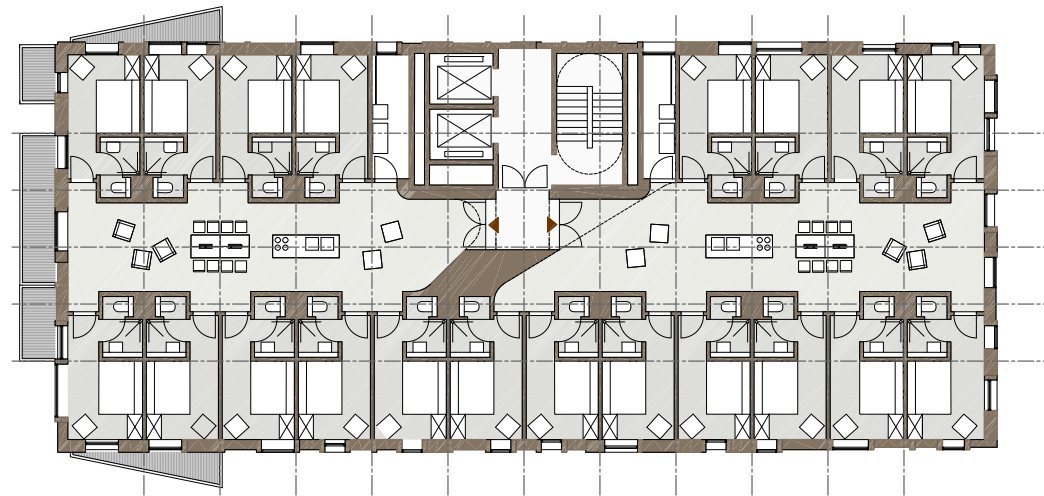


Grundrisse | Türme



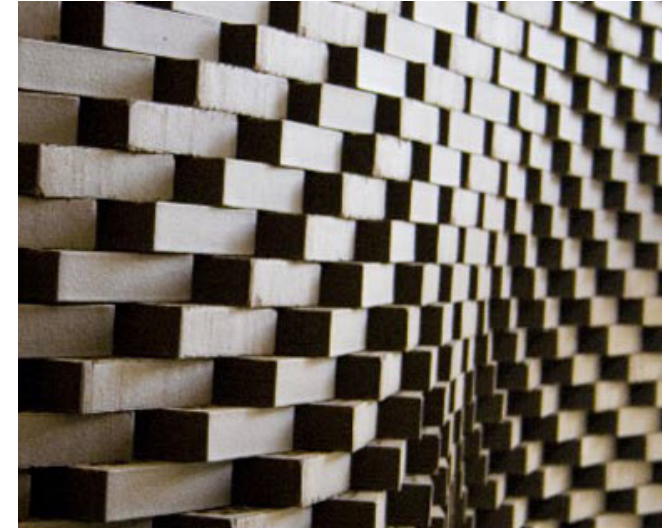


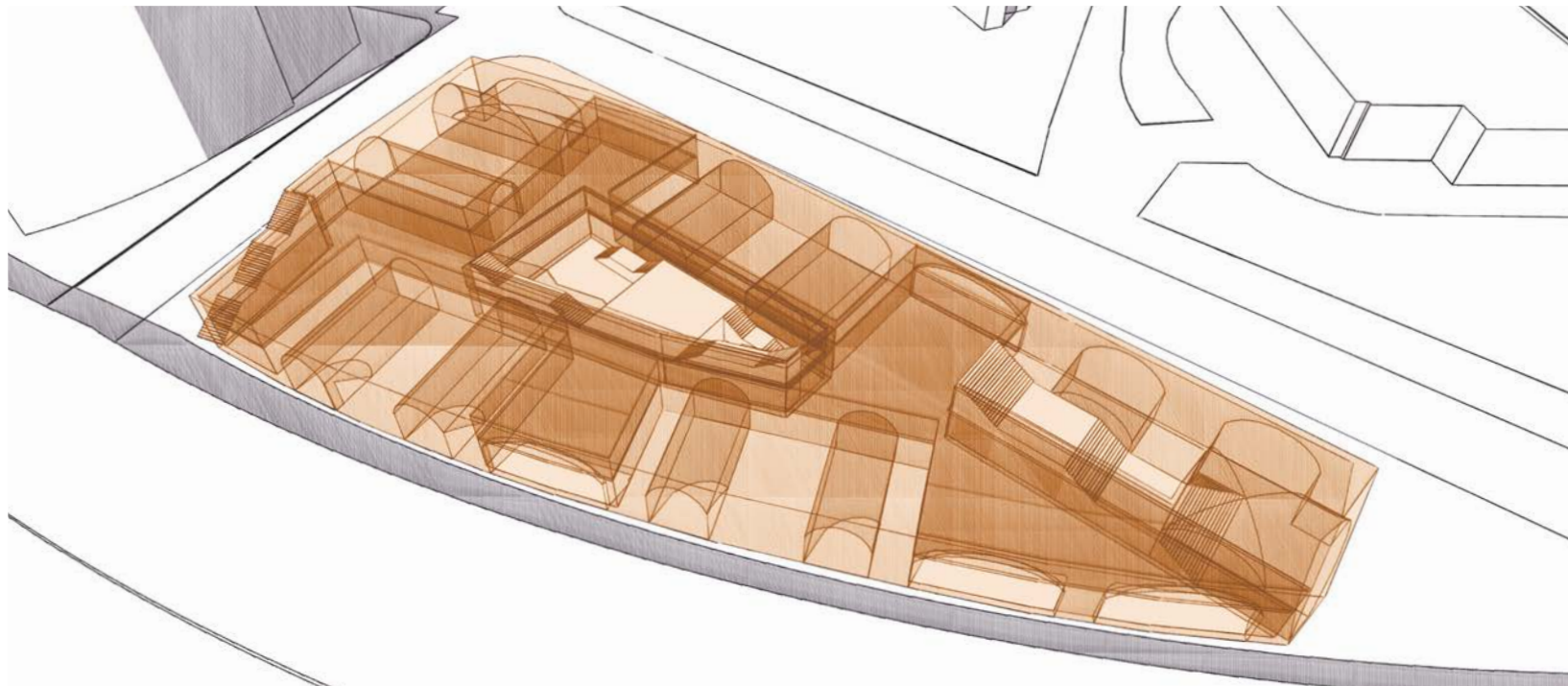
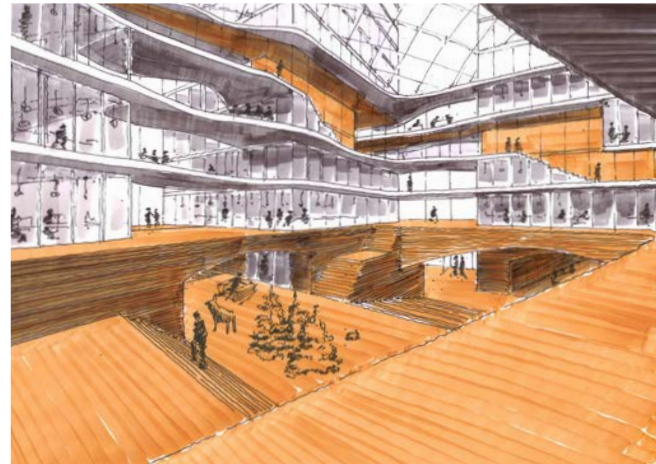




IV. Fassade | Material

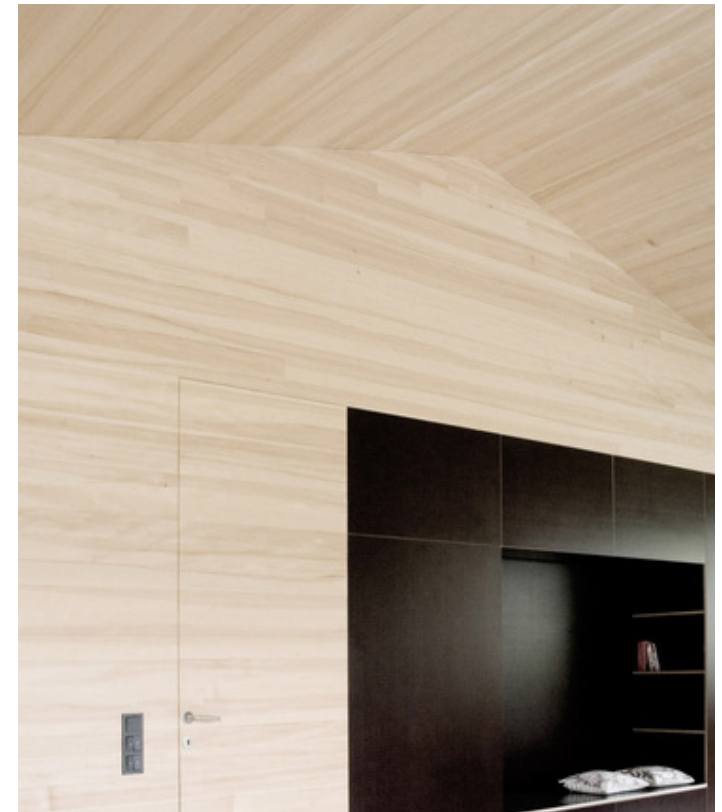
1. Sockel
2. Türme



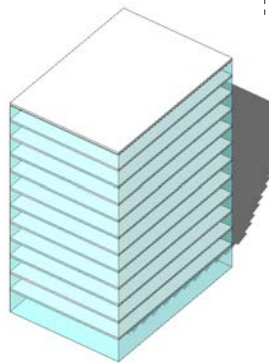




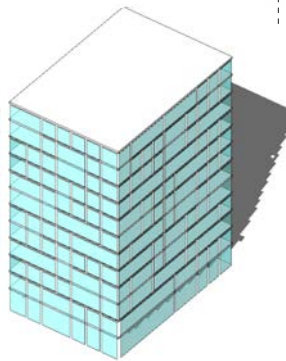
Turm 1



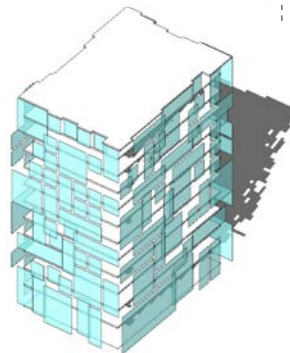
VOLUMEN



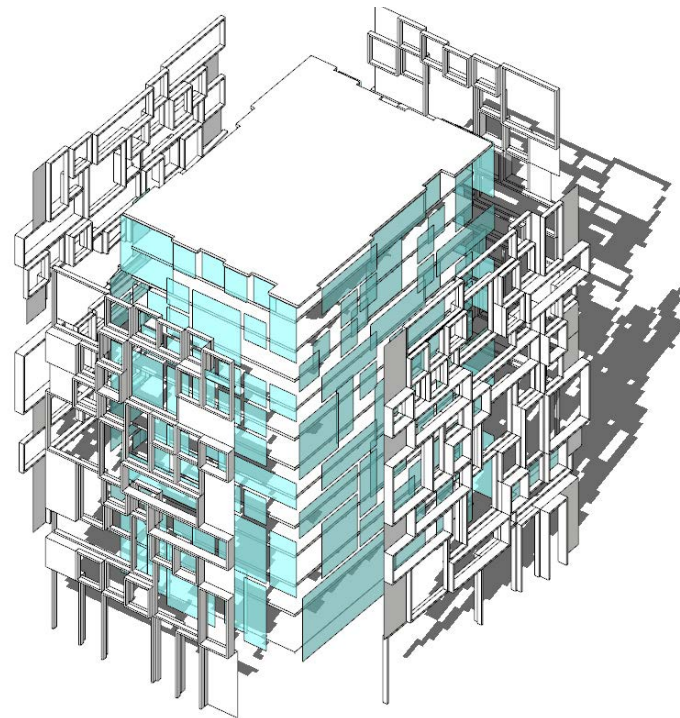
AUSTATTUNG



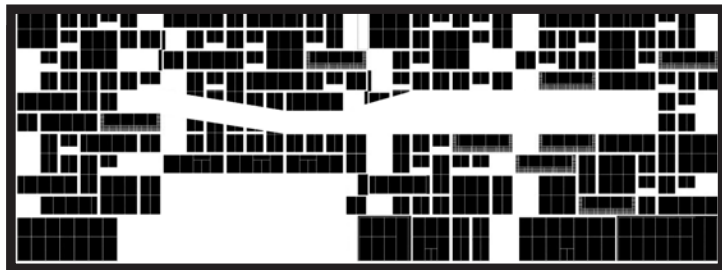
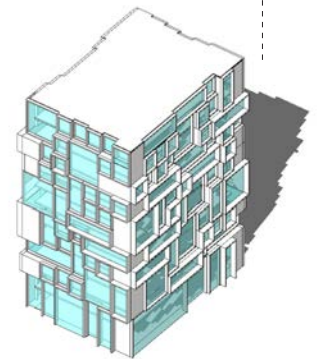
VERSCHATTUNG



EINFASSEN DER VIELSEITIGEN EINHEITEN DURCH RAHMEN

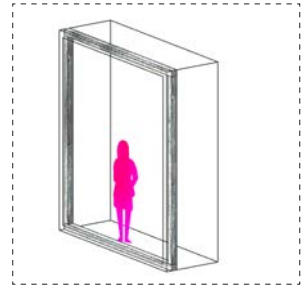


INDIVIDUALISIERT

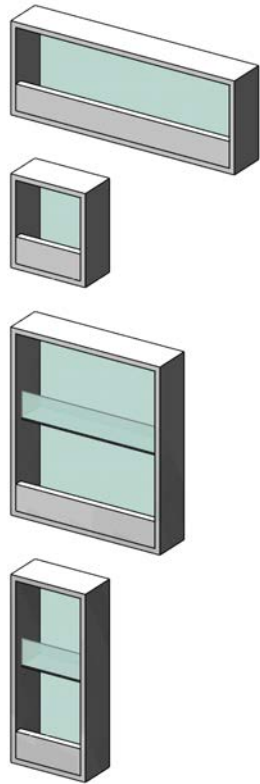


FASSADENABWICKLUNG

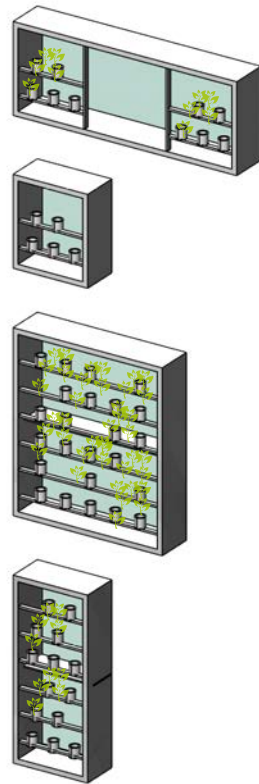
Umfassende Befestigungsschiene



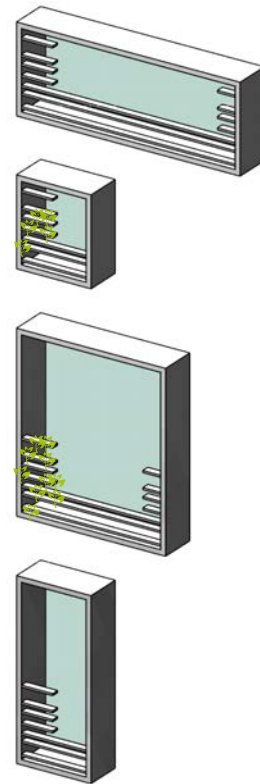
Geländer



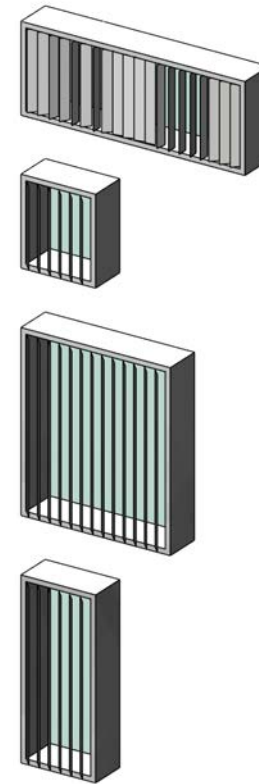
Bepflanzung



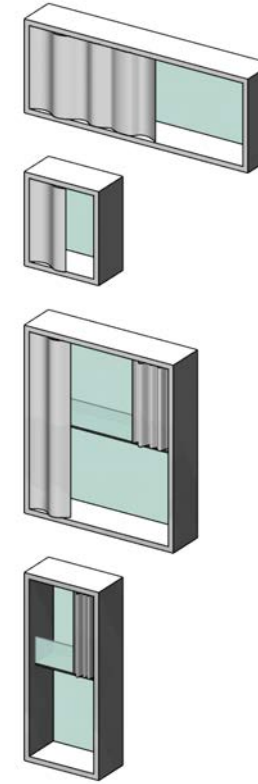
Regalsysteme



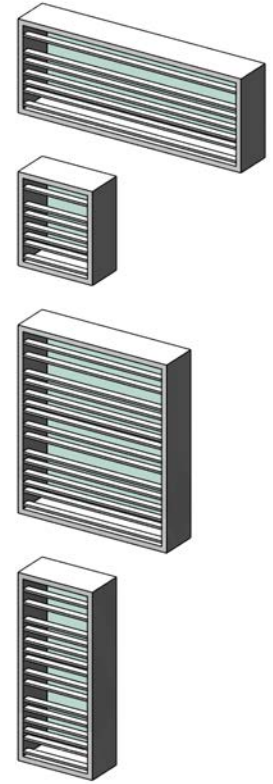
Verschattungsleisten



Vorhänge

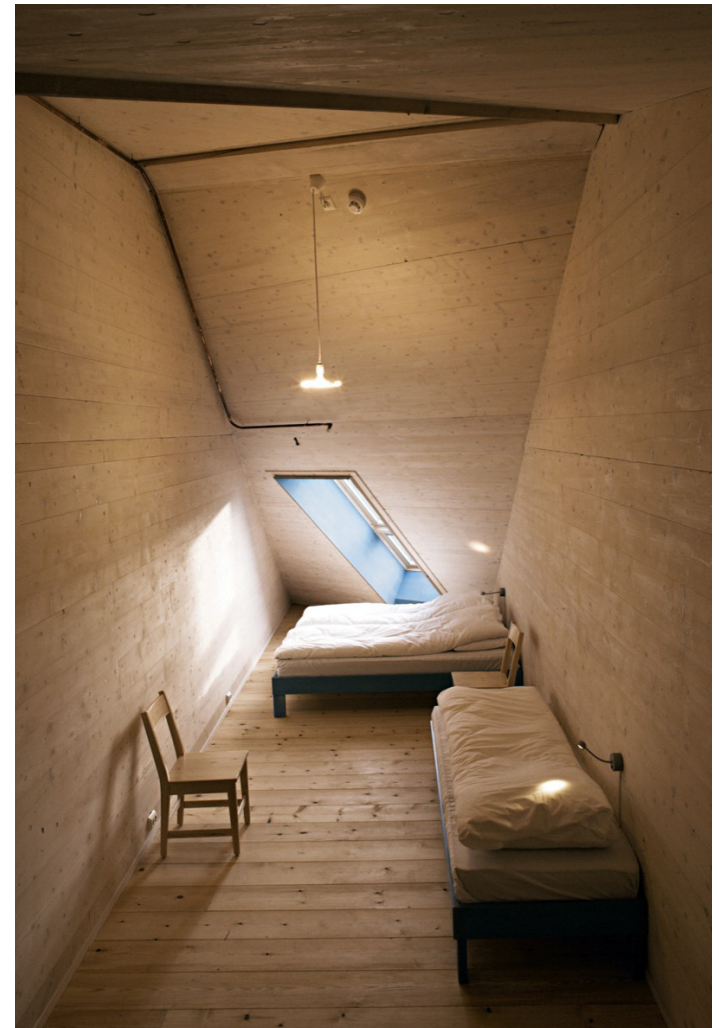
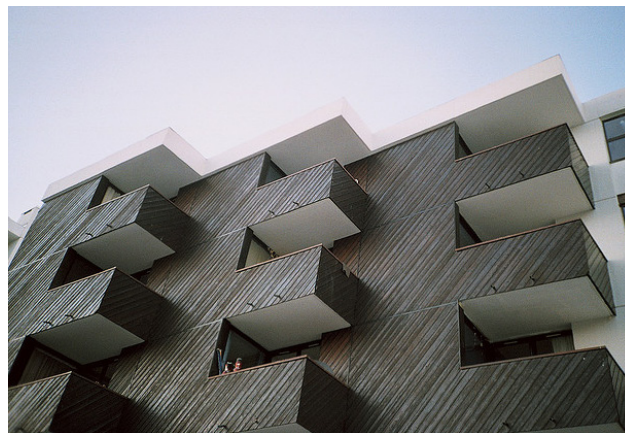


Sichtschutz

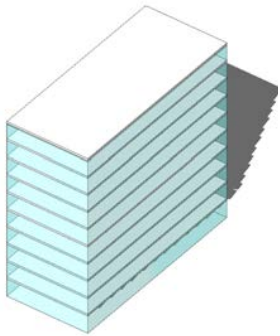




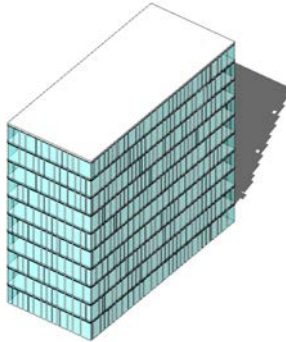
Turm 2



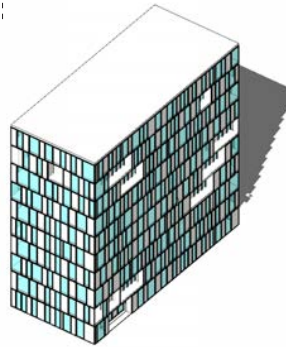
VOLUMEN



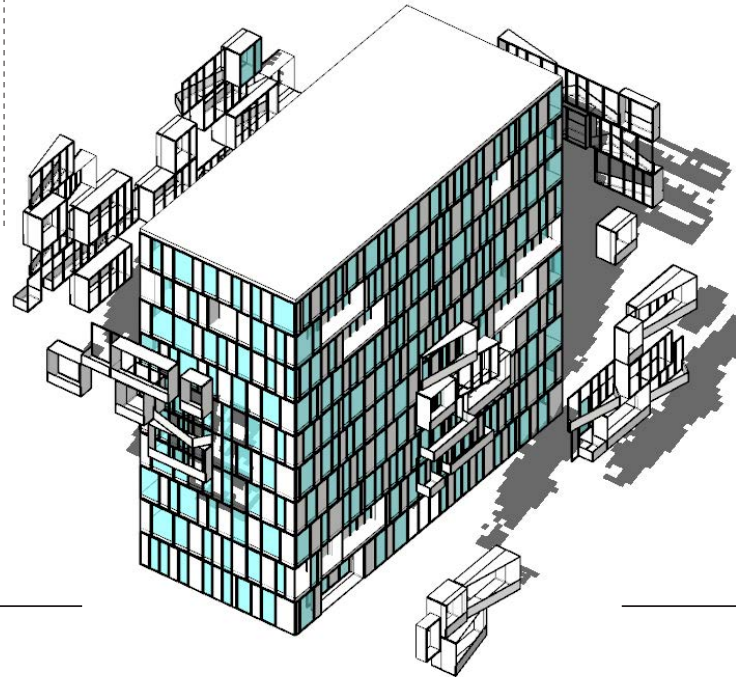
AUSTATTUNG



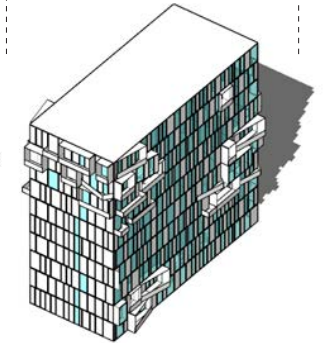
VERSCHATTUNG



APPLIKATION DES BALKON UND LOGGIABAUkastens

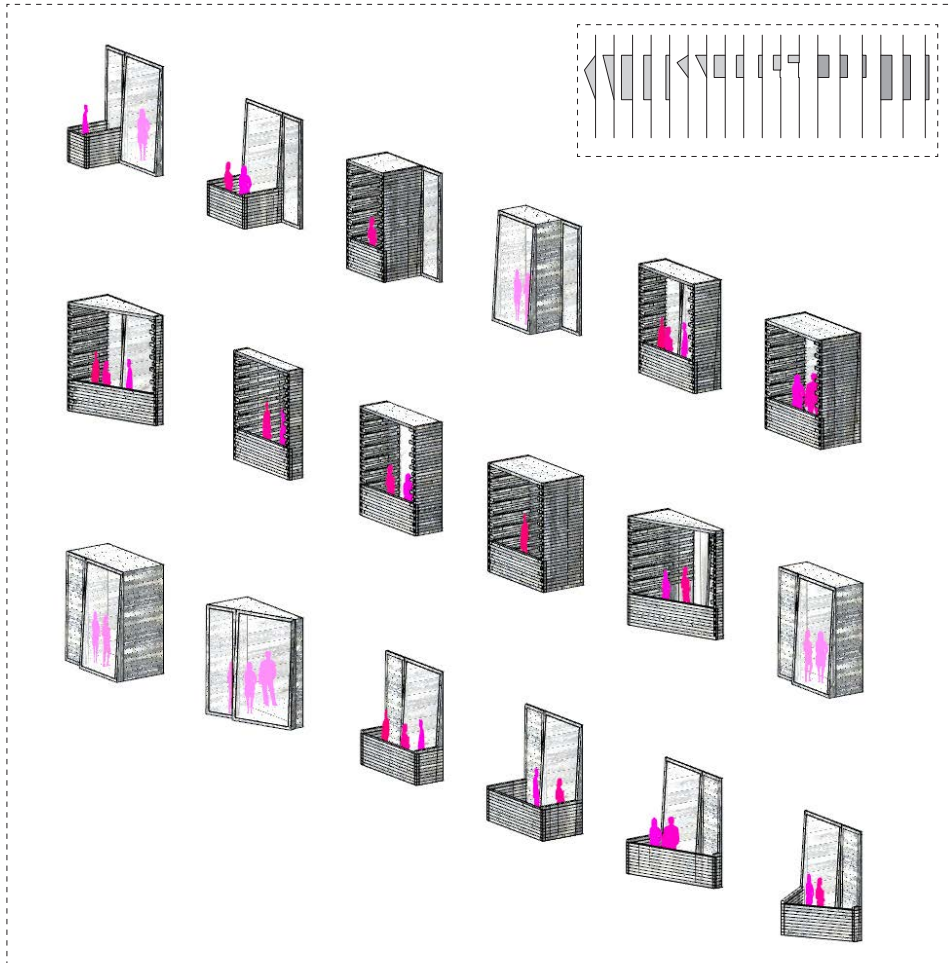
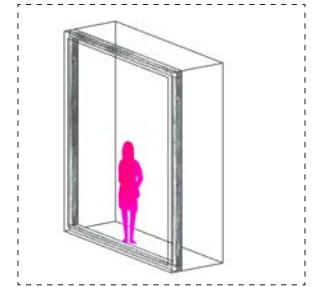


INDIVIDUALISIERT



ABWICKLUNG FASSADE

Umfassende Befestigungsschiene



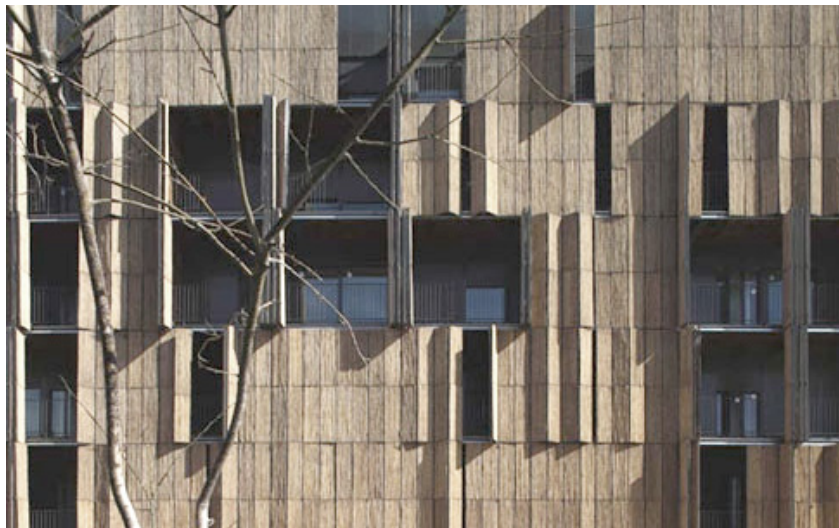
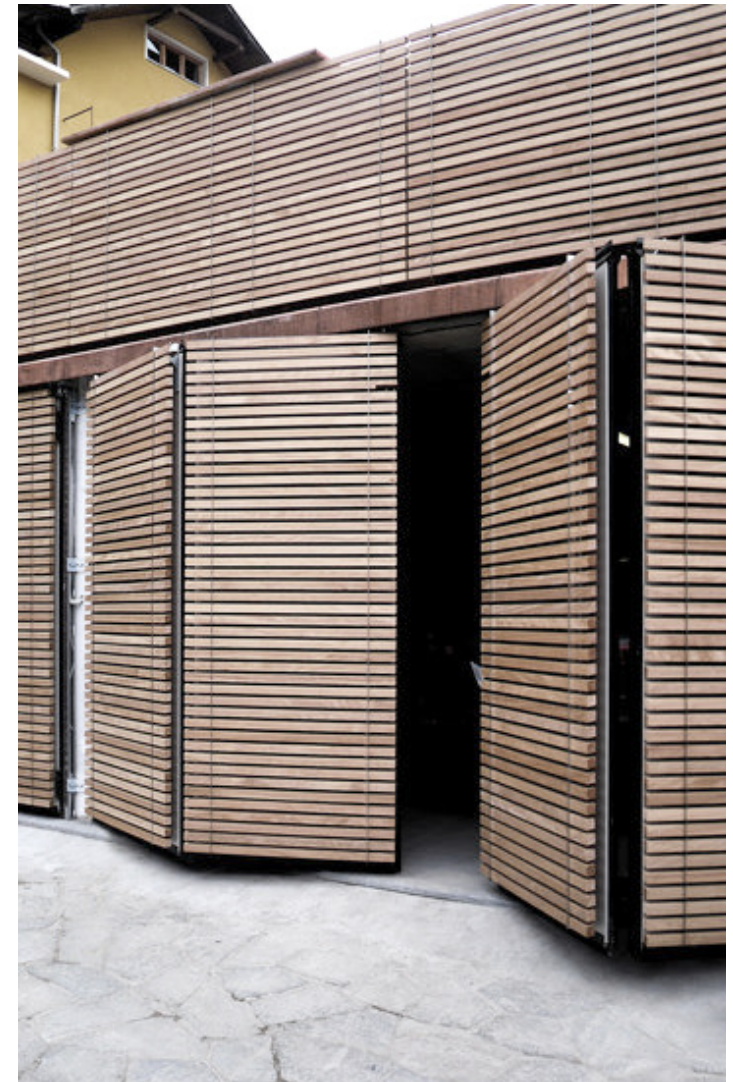
OPTIONEN 3m MODUL

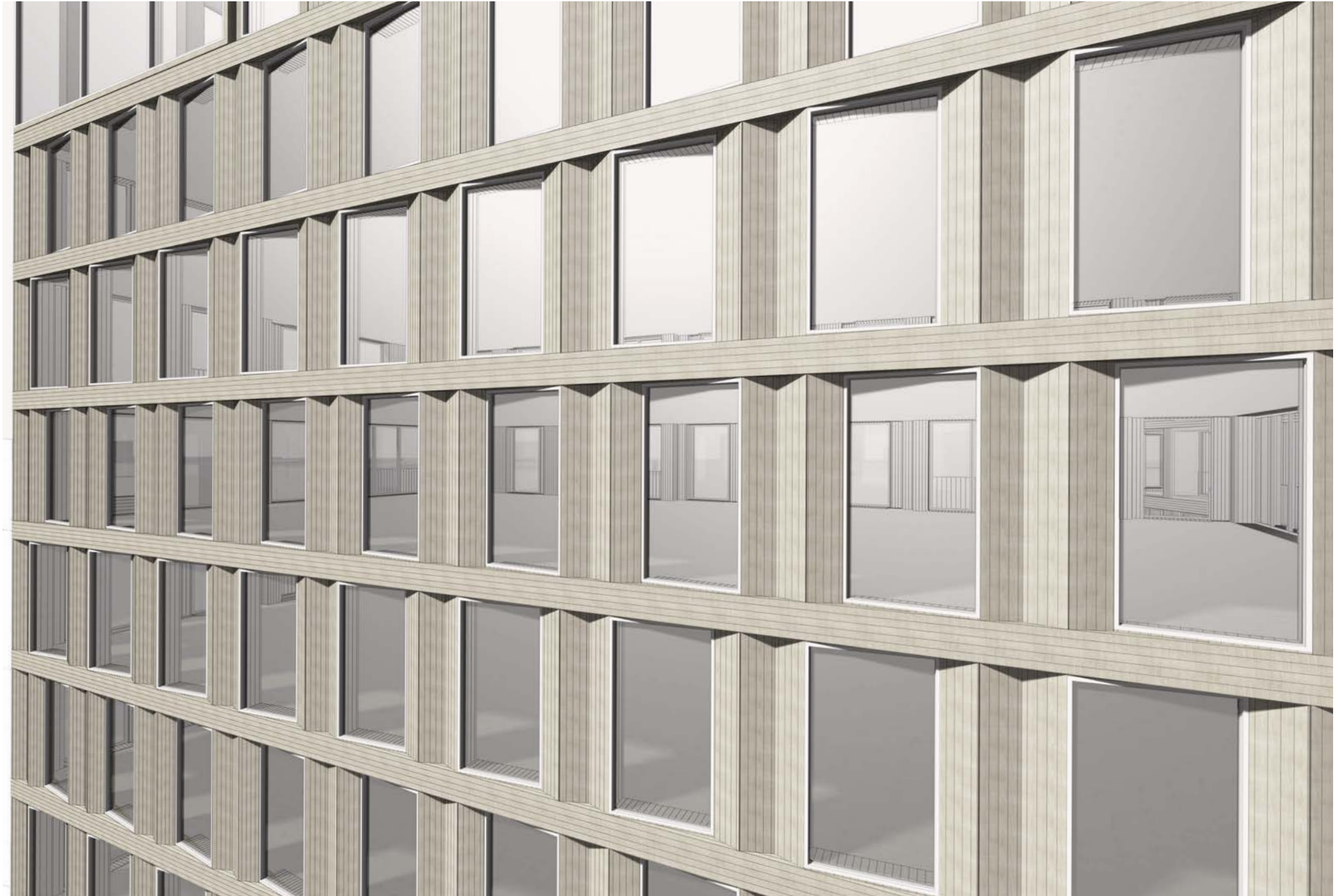


OPTIONEN 6m MODUL



Turm 3





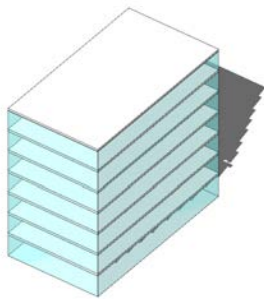




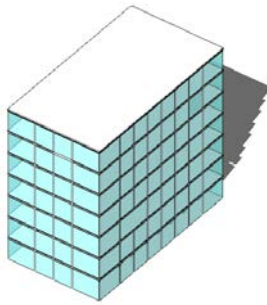
Turm 4



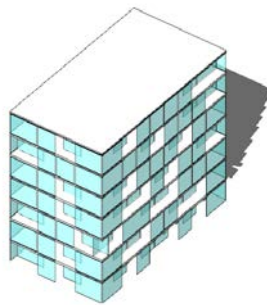
VOLUMEN



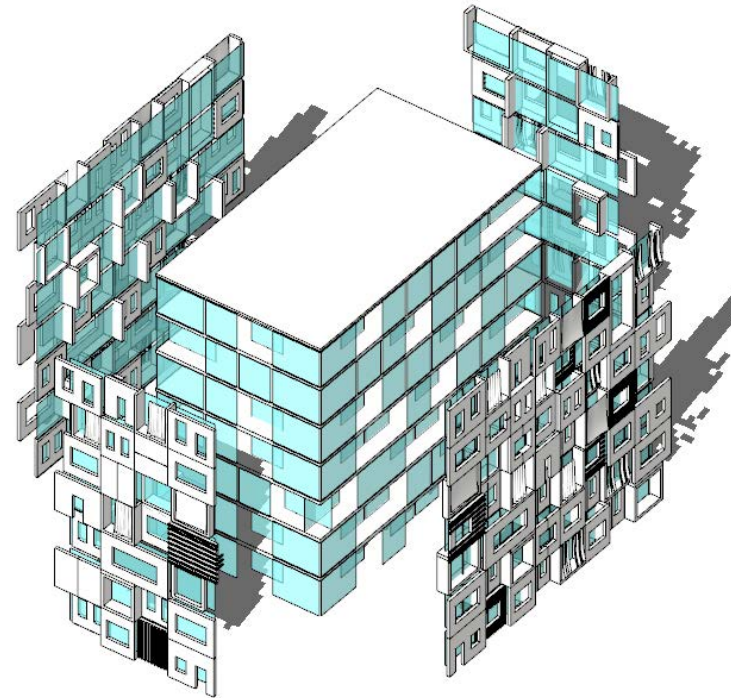
AUSTATTUNG



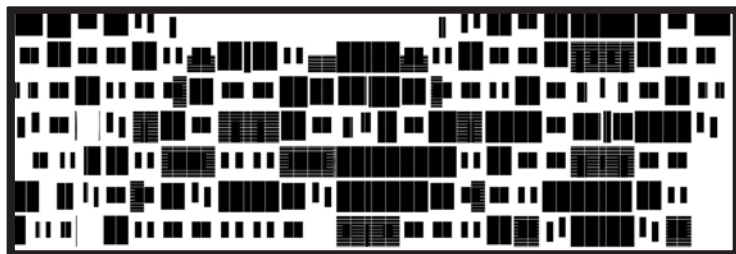
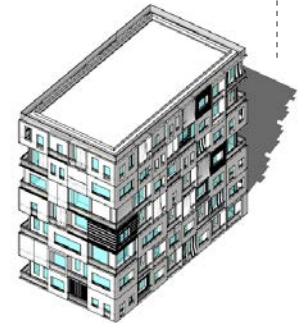
VERSCHATTUNG



ANWENDUNG DES MODULARES BAUKASTEN SYSTEMS



INDIVIDUALISIERT

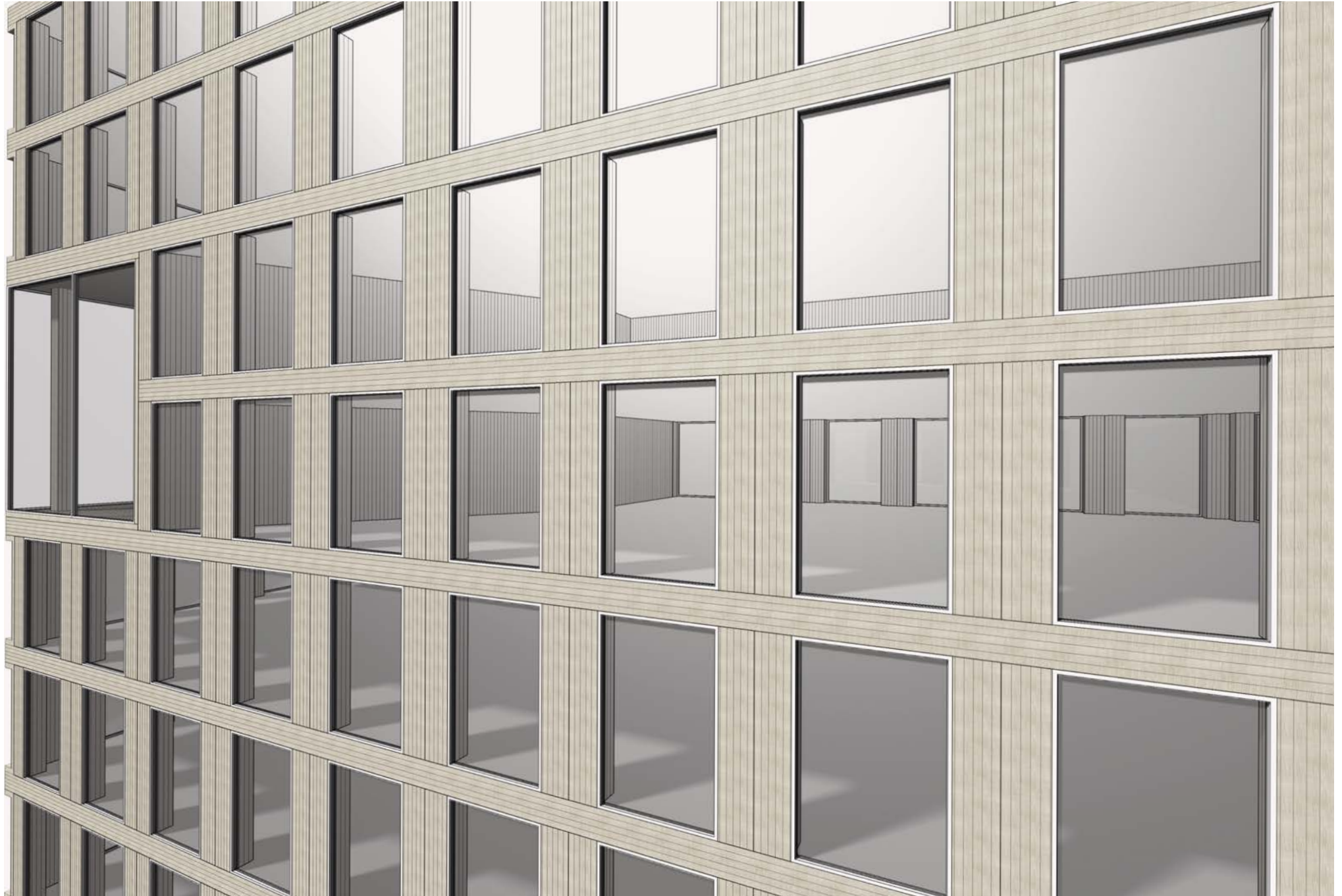


FASSADENABWICKLUNG



Turm 5

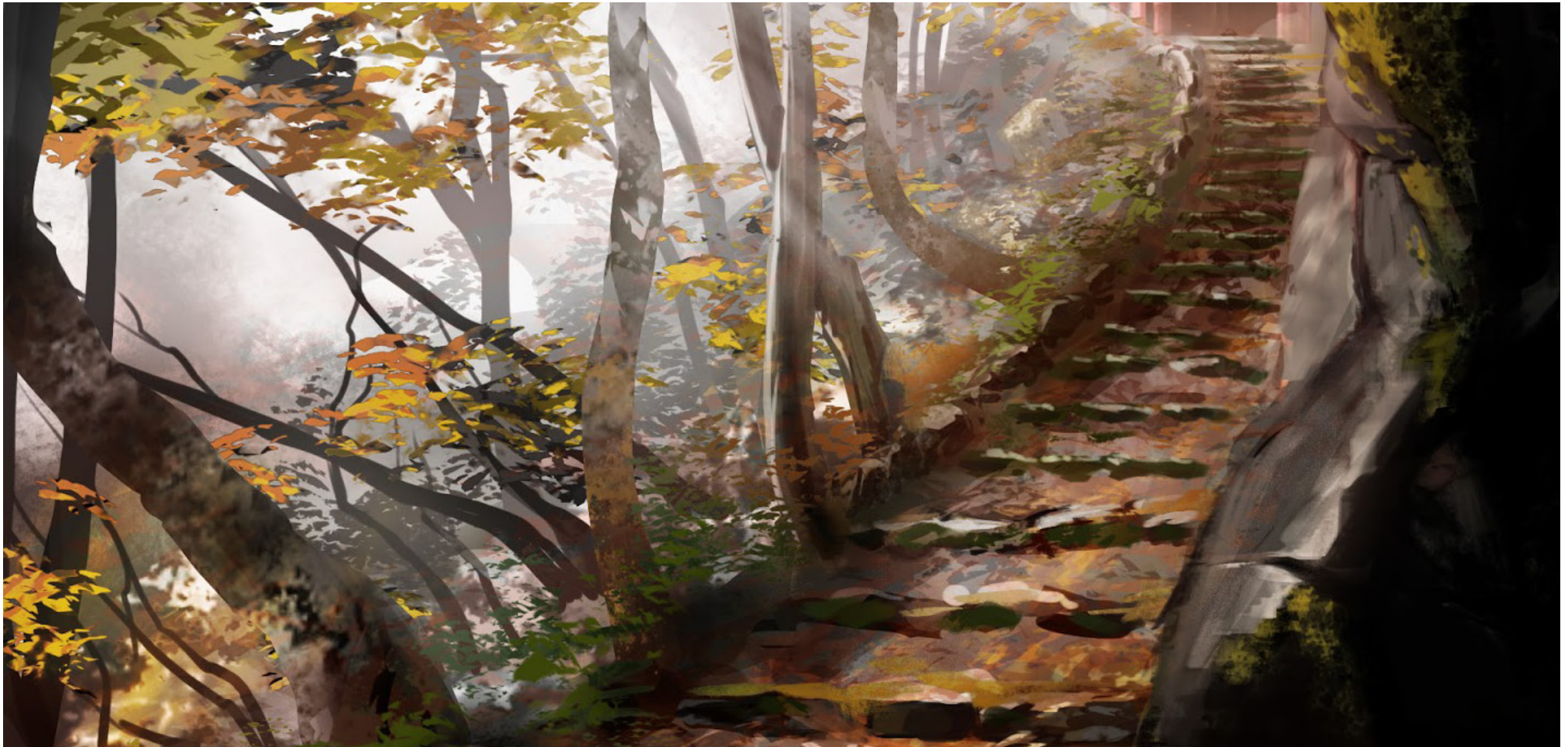
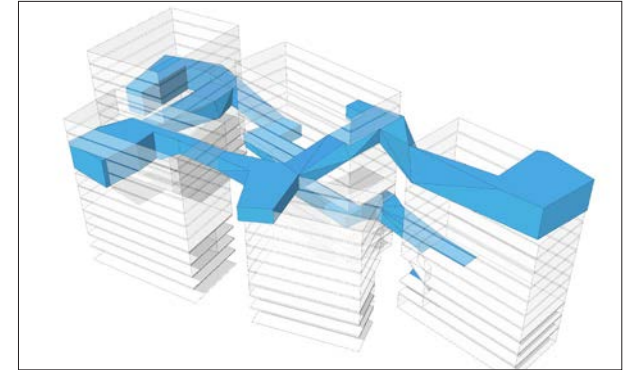








BergPfad





WISSEN



GEMEINSCHAFT



GRÜN ERLEBEN



LEUCHTTURM



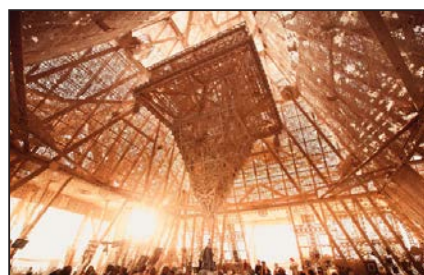
OASE



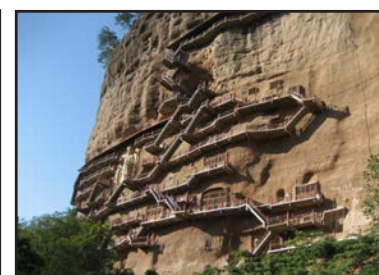
EVENT



ZUSAMMENKOMMEN



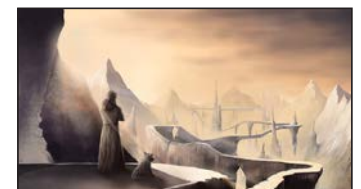
INTEGRATION



GEHEIMNISSE



ANTIZIPATION





EINGANG
1.Stockwerk

AUS- UND EINBLICKE ECKWERK
2/3.Stockwerk

SHOWROOMS
4/5.Stockwerk

AUFSTIEG
6.Stockwerk

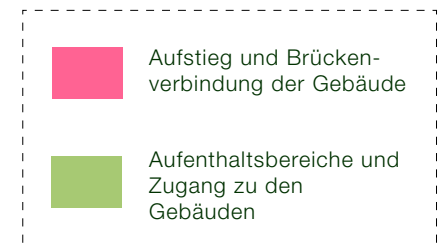
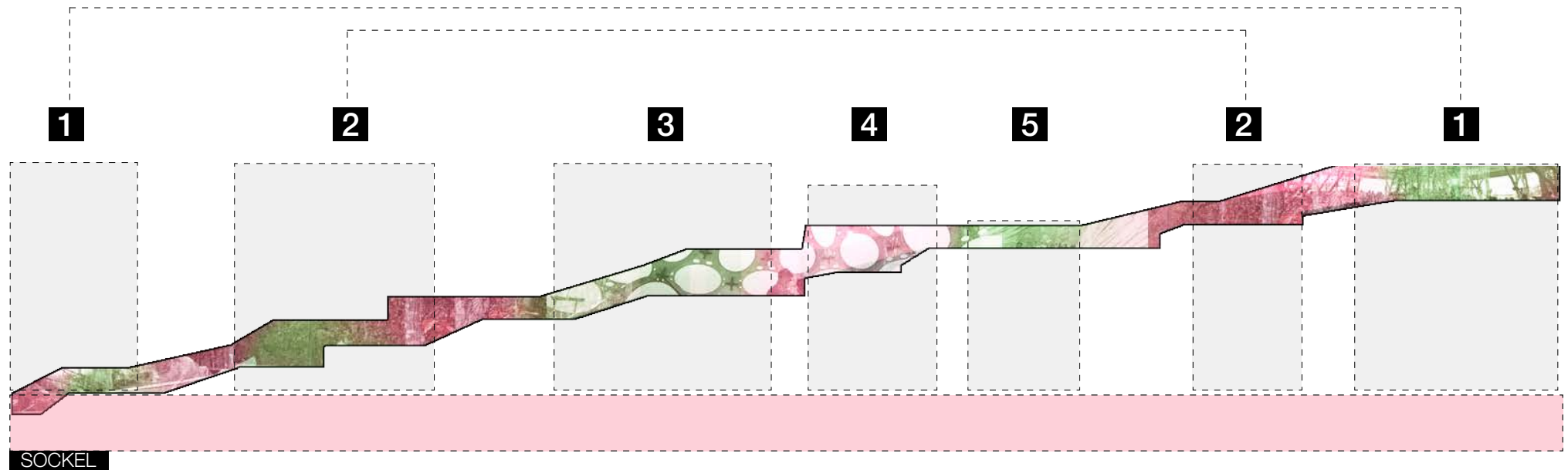
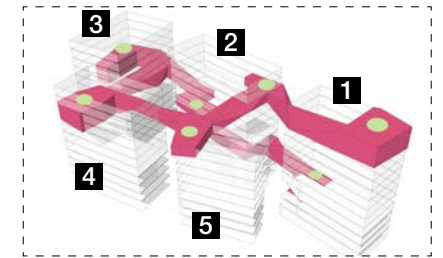


EVENT BEREICHE
7/8.Stockwerk

INTERAKTIONSRAUM
9.Stockwerk

OASE
10.Stockwerk

TEEHAUS/LEUCHTTURM
11/12.Stockwerk



WISSEN

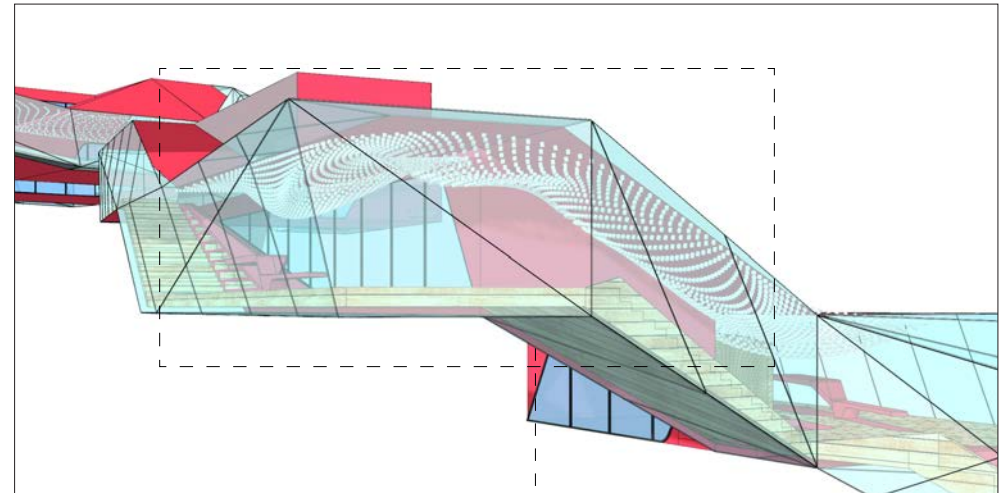
SHOWROOM

OASE

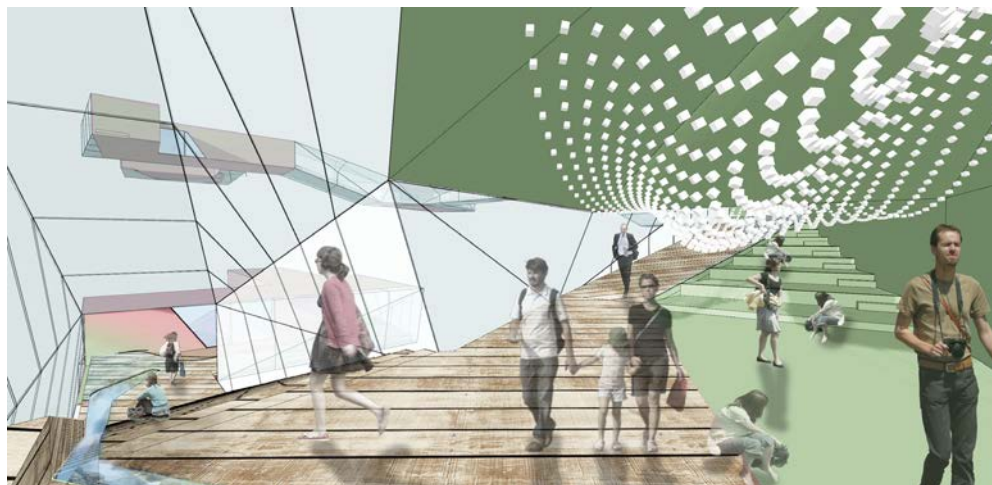
AUSTAUSCH



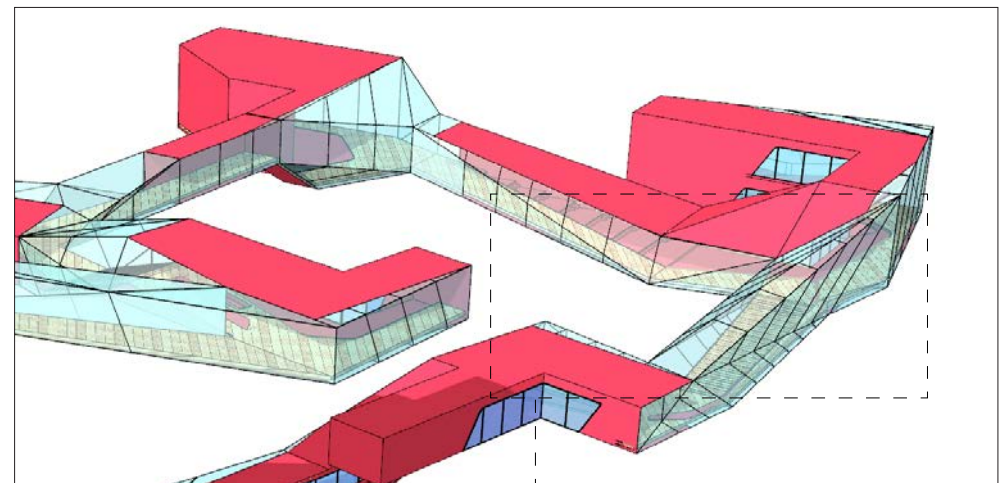
SHOWROOM FÜR STARTUPS - DIAGRAMM INNENRAUM



BETRACHTETER AUSSCHNITT



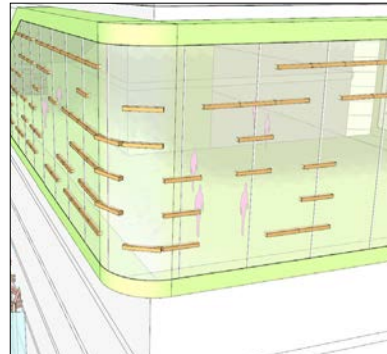
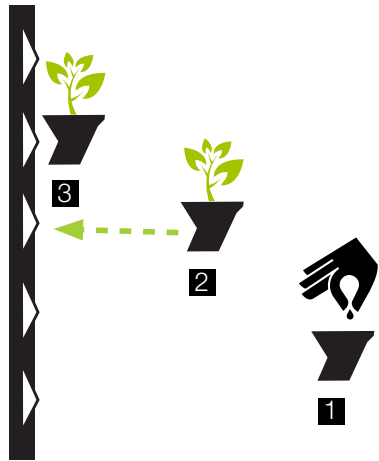
AUSBLICK UND WISSENSTREPPE - DIAGRAMM INNENRAUM



EVENT SPACE - NORDÖSTLICHER TURM



INTERIEUR



ECKWERK Holzmarktstraße Berlin
Interior Konzept - Event Räume
Individuell bepflanzt Innenwände, Böden und Installationen
Showroom für die anliegenden Inkubator Räume

Kleihues + Kleihues | **GRAFT**®



EVENT SPACE - NORDÖSTLICHER TURM

V. Entwurf | Visualisierungen



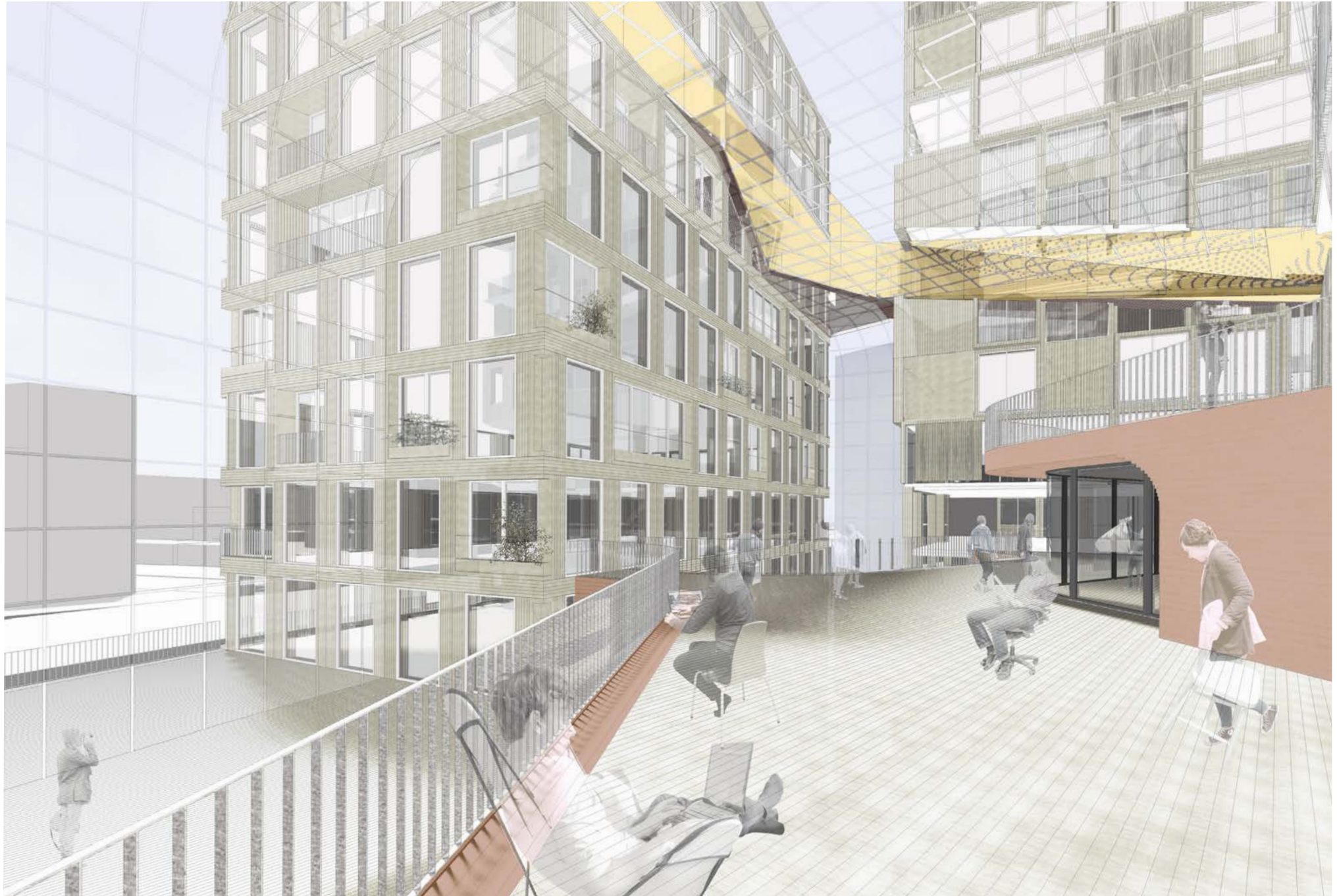






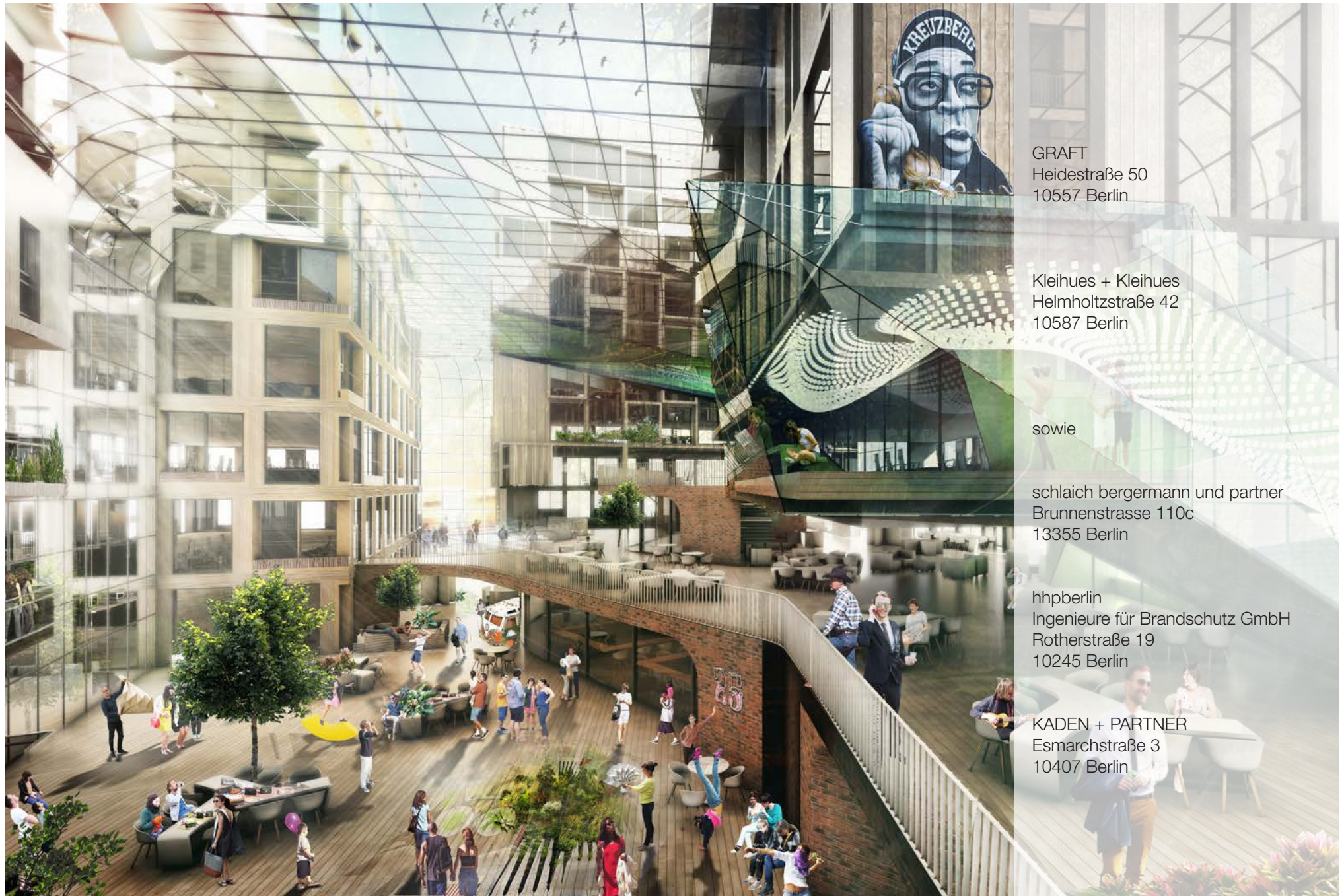








VI. Mitwirkende



GRAFT
Heidestraße 50
10557 Berlin

Kleihues + Kleihues
Helmholtzstraße 42
10587 Berlin

sowie

schlaich bergemann und partner
Brunnenstrasse 110c
13355 Berlin

hpbberlin
Ingenieure für Brandschutz GmbH
Rotherstraße 19
10245 Berlin

KADEN + PARTNER
Esmarchstraße 3
10407 Berlin