

ANGELICA R. Angelini, L. Bregasi (coord) R. Faralli, G. D'Emilio, V.Galeone, G. Troisi,
(SicilyLab) M.Disha, F.Imami, E.Hoxha (Polis University)
Gioiosa Marea 2013



MAREA

[between sky, heart, sea]

Chapter A
Macro. Territorial, urban, programatic actions

**EU POLICIES FOR
INTEGRATED
COSTIAL ZONE
MANAGEMENT**

EU MEMBERS

NON EU MEMBERS

**EU POLICIES FOR
INTEGRATED
COSTIAL ZONE
MANAGEMENT**

EU MEMBERS

NON EU MEMBERS

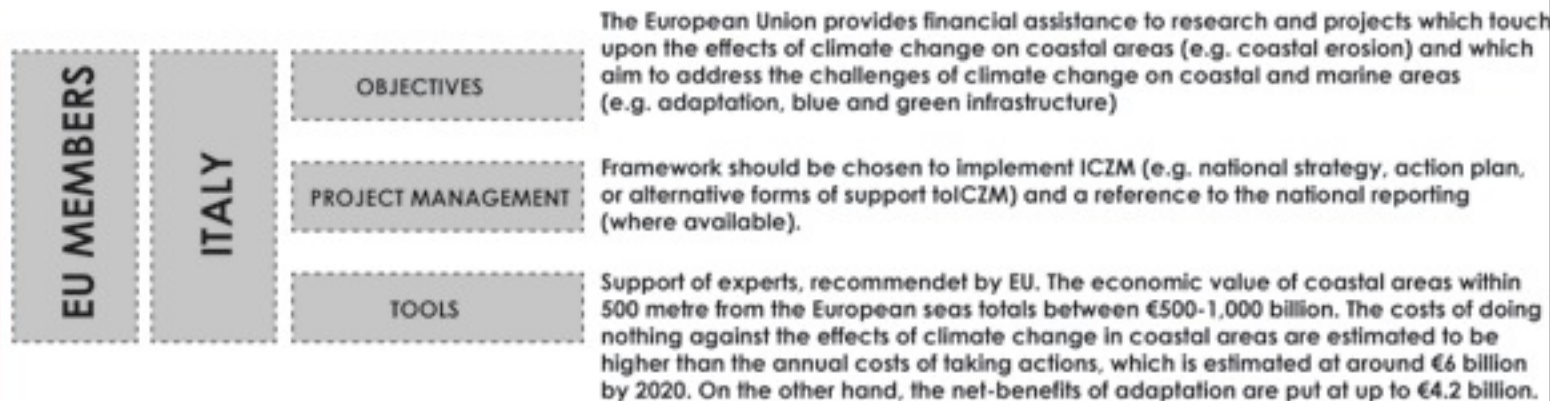
ITALY

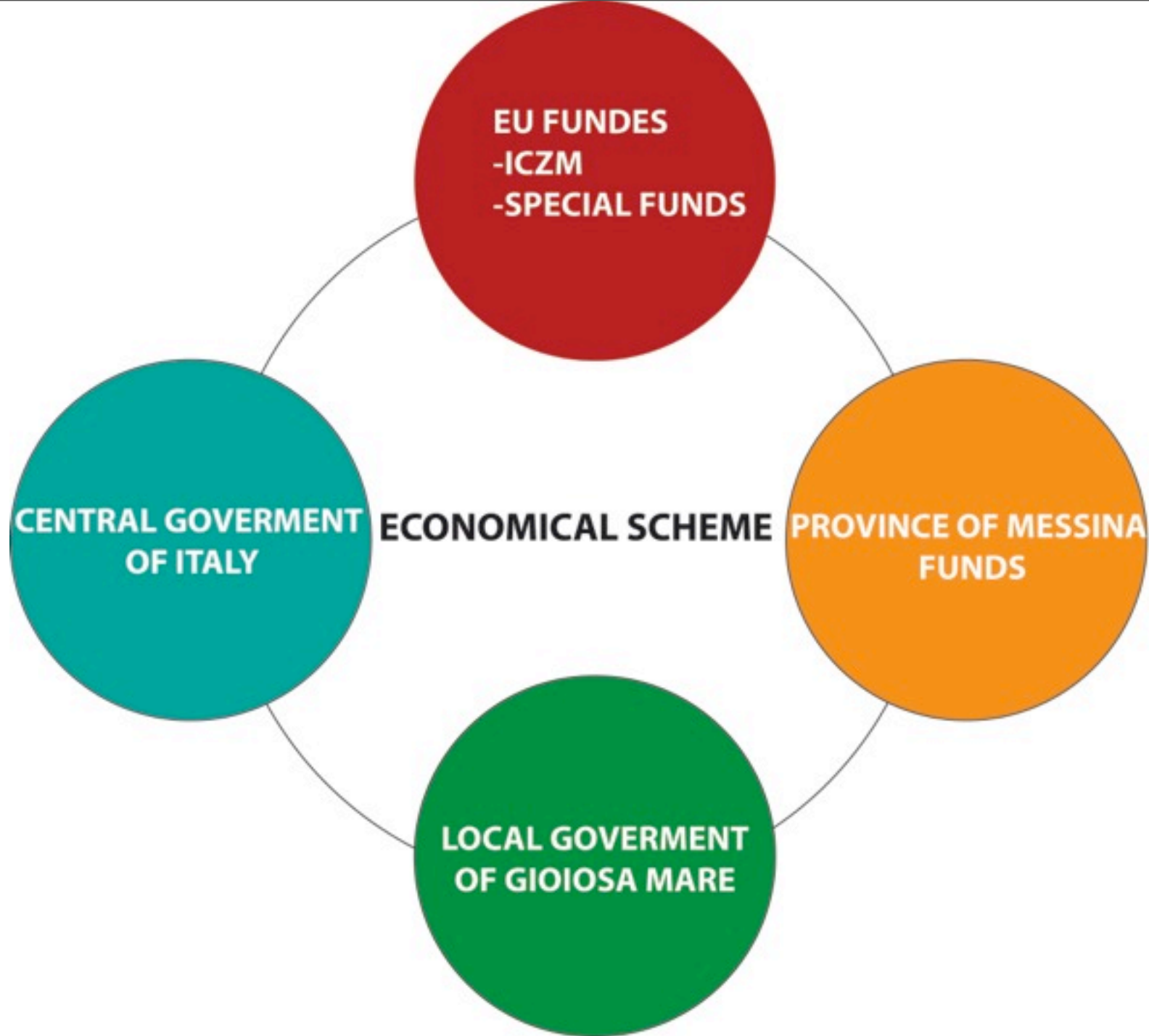
OBJECTIVES

PROJECT MANAGEMENT

TOOLS

EU POLICIES FOR INTEGRATED COSTIAL ZONE MANAGEMENT





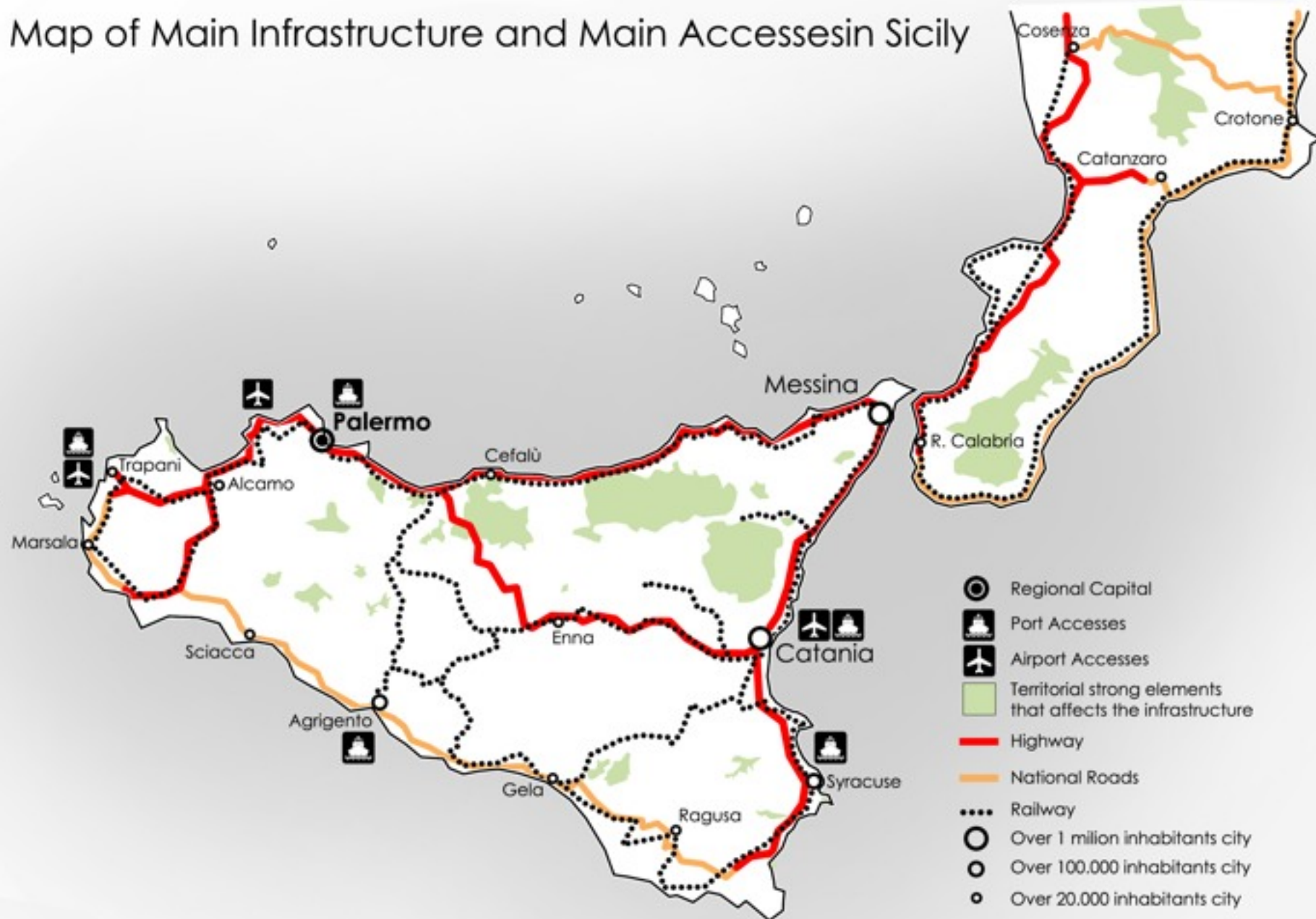
EUROPEAN CONNECTIONS (MAIN ROADS/SEA LINKS)



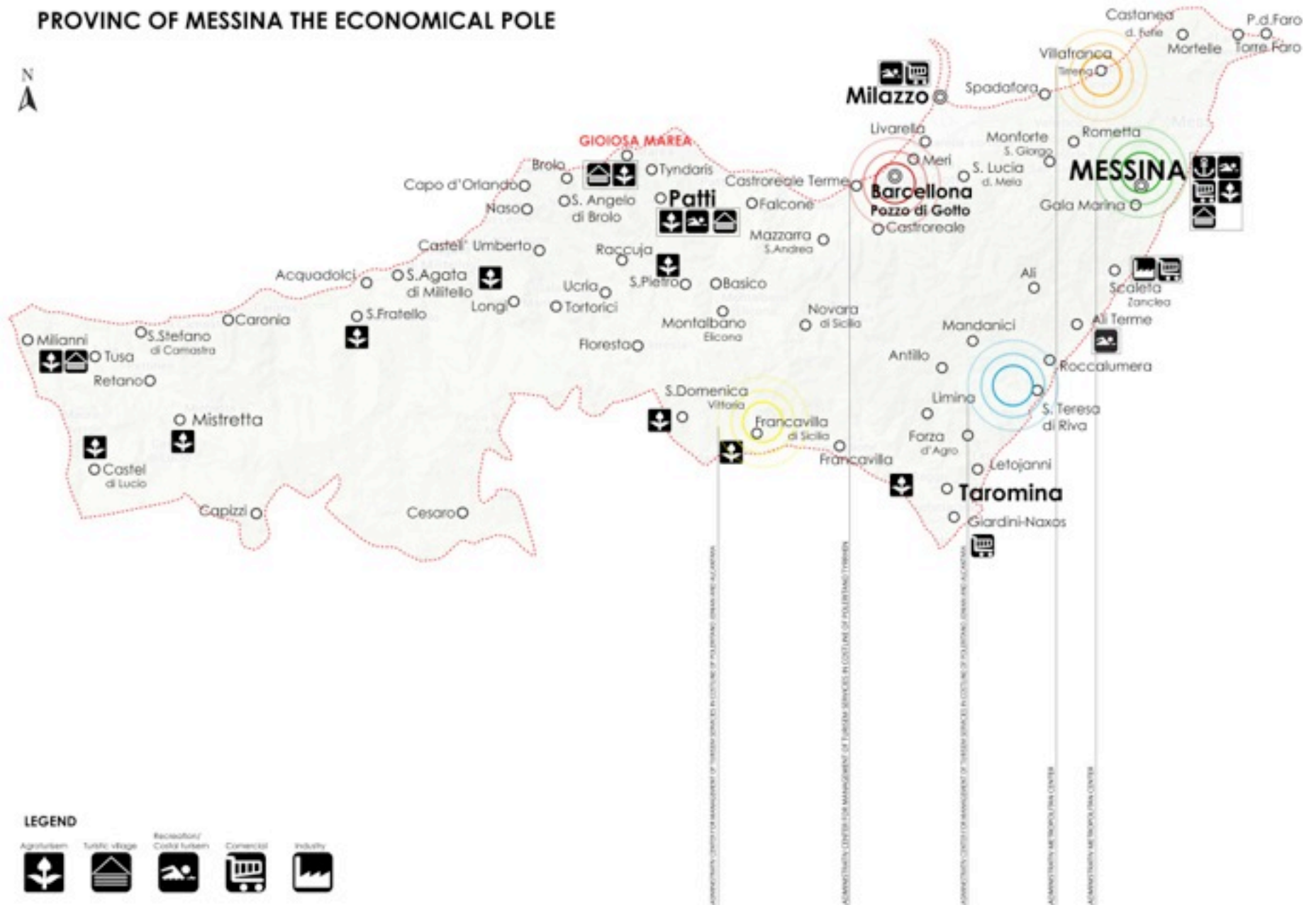
MOBILITY OF PEOPLE IN PROVINCE OF MESSINA



Map of Main Infrastructure and Main Accesses in Sicily



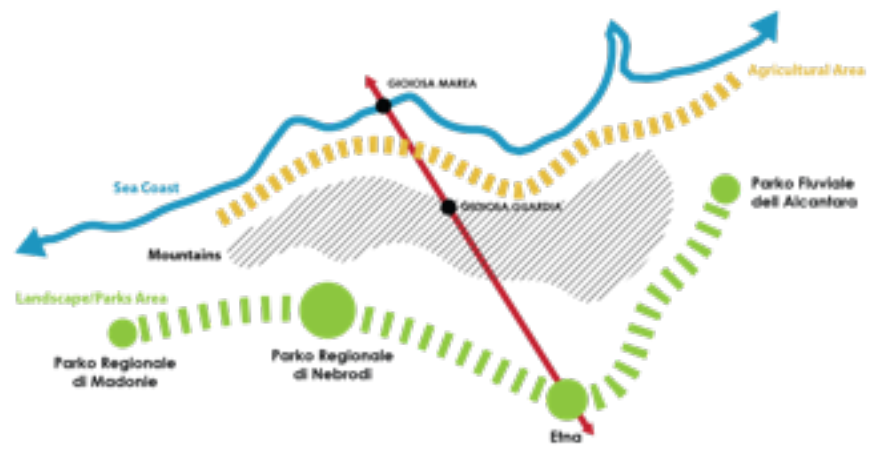
PROVINC OF MESSINA THE ECONOMICAL POLE



Environmental Issues - Province of Messina



Defining Environmental Connection - Province of Messina

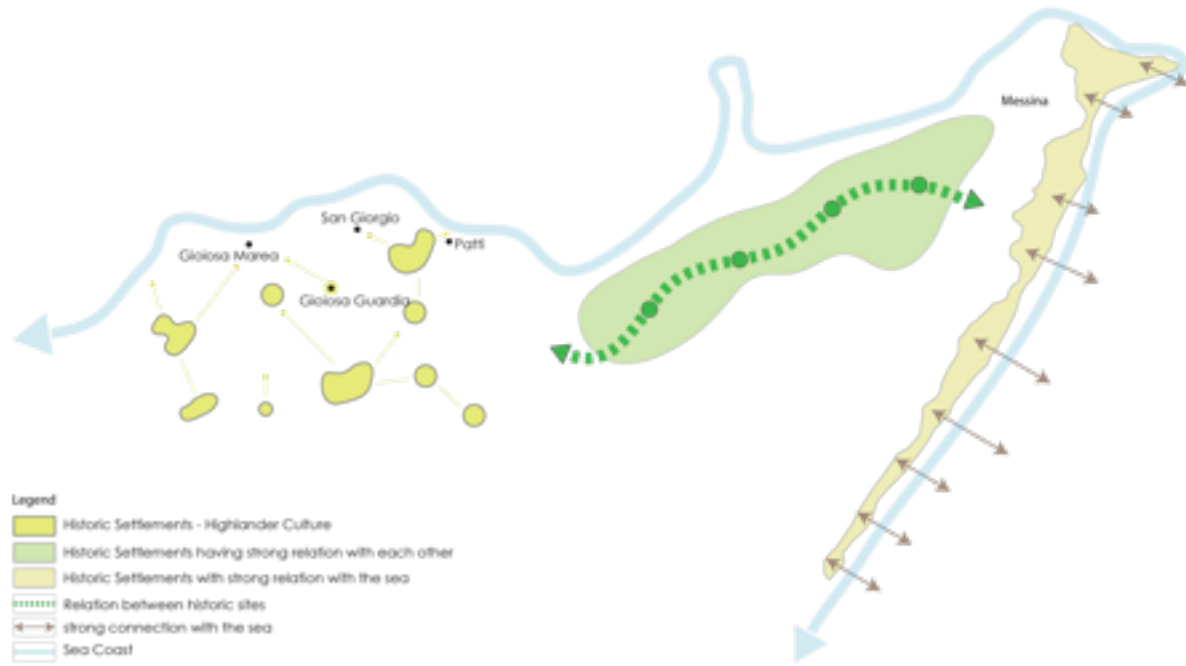


Historic Settlements - Province of Messina



- Legend
- Historic Paths
 - Historic Sites
 - Administrative Sites

Historic Settlements - Province of Messina



Existing trekking paths in Messinas Province



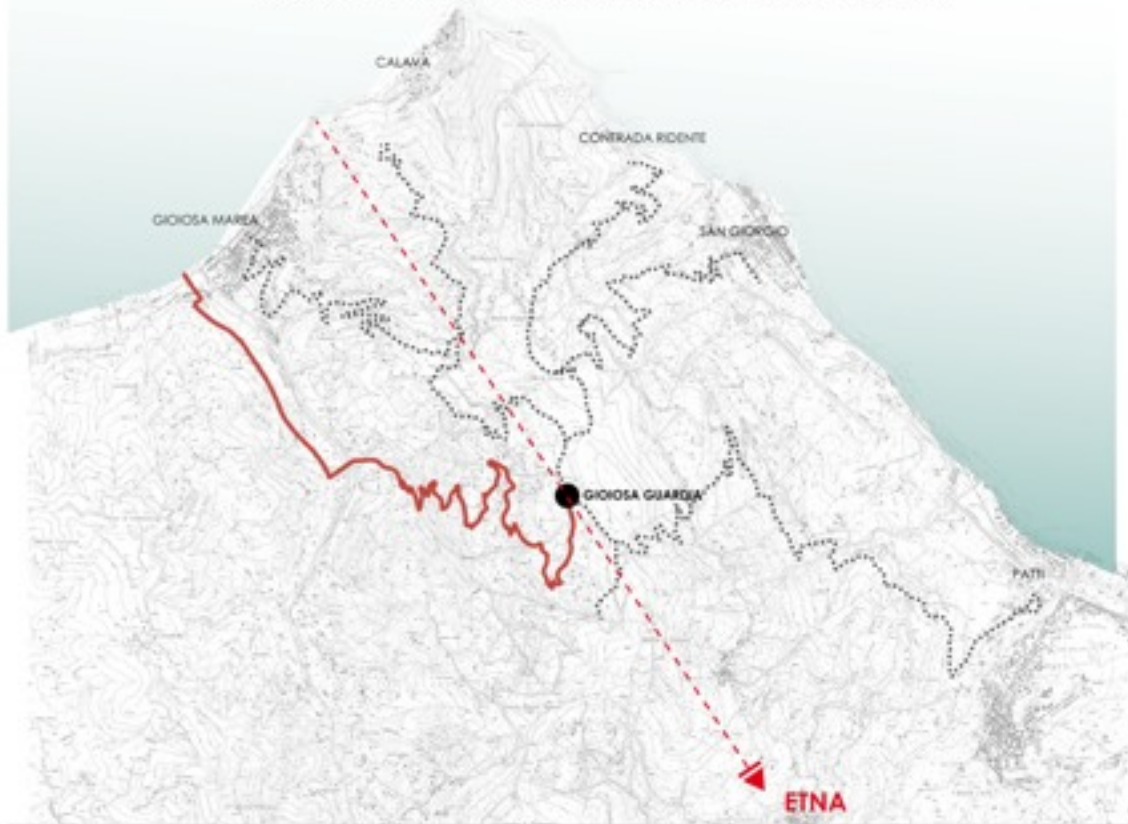
Diagram of main existing trekking destinations in Sicily



Emphasizing the Vertical Axe
Sea - Gioiosa Marea - Gioiosa Guardia - Etna



ITENERAIES AND CONNECTION WITH GIOIOSA GUARDIA

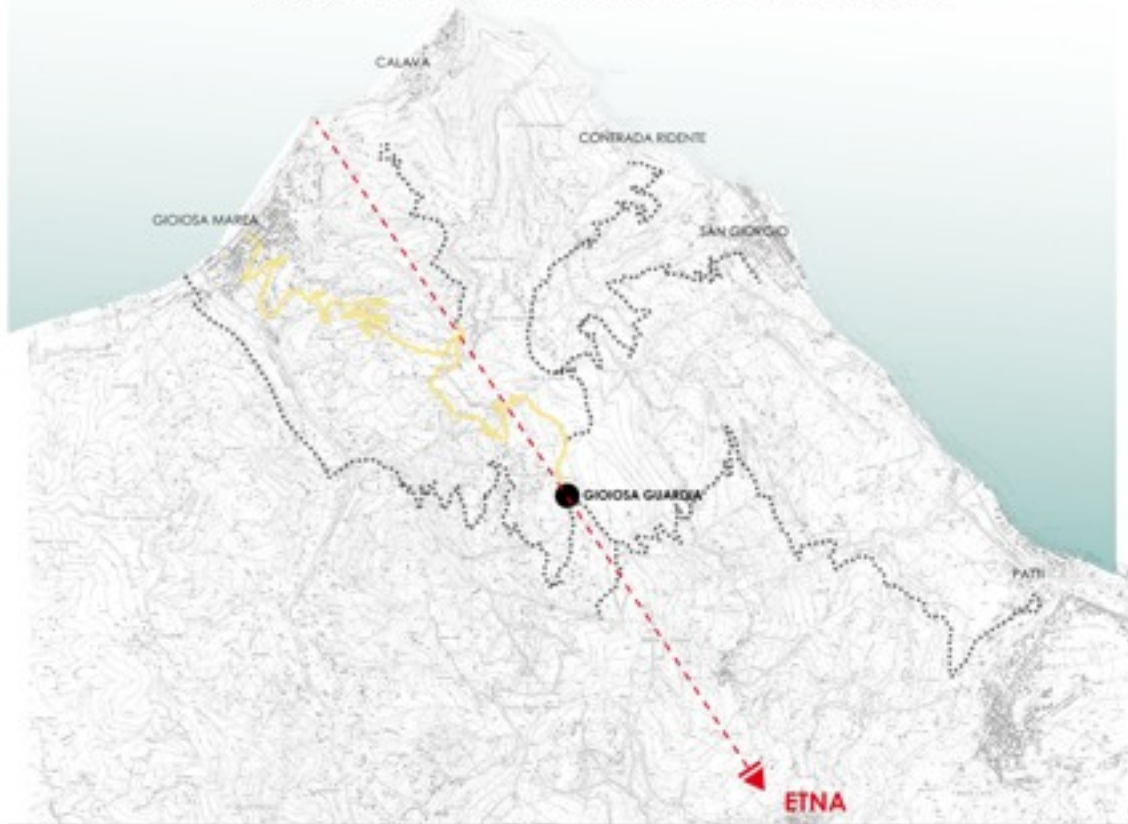


Extreme Sports Itinerary Historical Itinerary Ecological Itinerary Sportiv Itinerary Archaeological 01 Archaeological 02 Archaeological 03

- Vertical Extreme Connection
- Il Volo D'Angelo
 - Parapendio
 - Delta Plan



ITENERAIES AND CONNECTION WITH GIOIOSA GUARDIA



- Extreme Sports Itinerary
- Historical Itinerary**
- Ecological Itinerary
- Sportiv Itinerary
- Archaeological 01
- Archaeological 02
- Archaeological 03

Strongest Connection since 1773.
- Religious Connection
- Annual Pelegrinaje



ITENERAIES AND CONNECTION WITH GIOIOSA GUARDIA

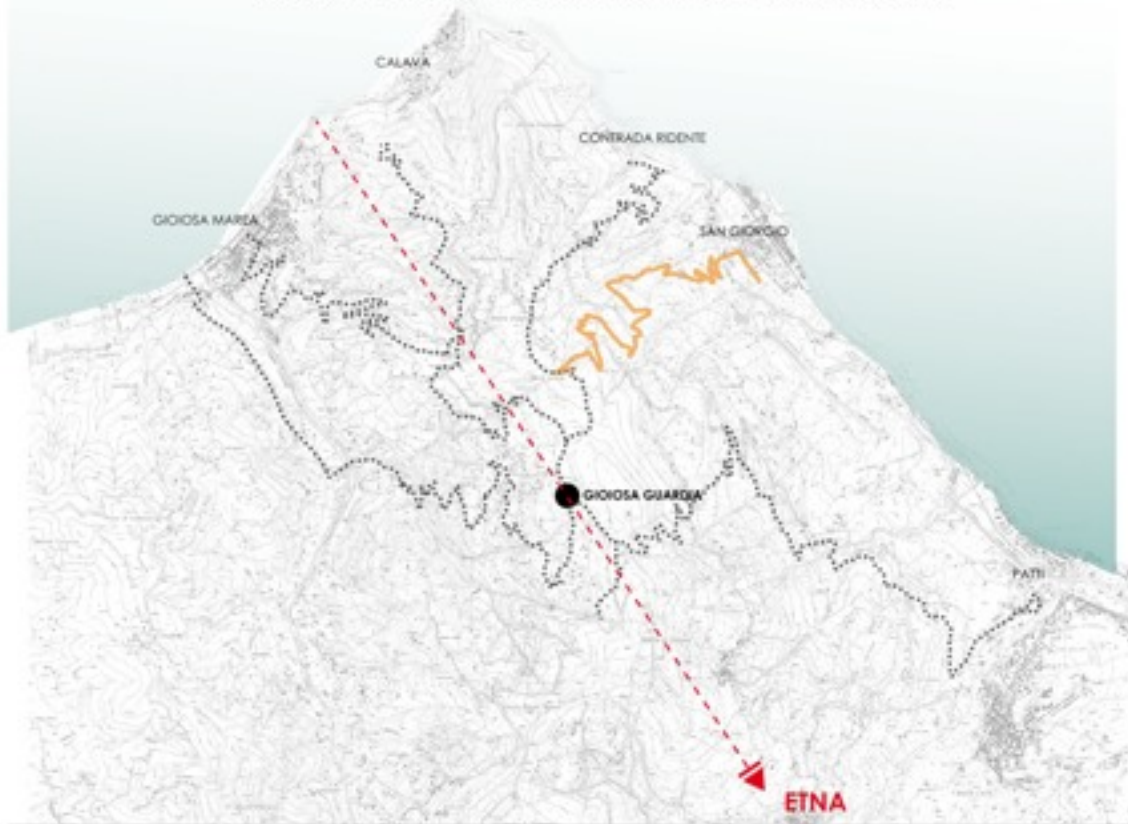


Extreme Sports Itinerary Historical Itinerary **Ecological Itinerary** Sportiv Itinerary Archaeological 01 Archaeological 02 Archaeological 03

- Green Areas Connective Path
- Series of Bel Vedere
- Landscape focal points



ITENERAIES AND CONNECTION WITH GIOIOSA GUARDIA



- Extreme Sports Itinerary
- Historical Itinerary
- Ecological Itinerary
- Sportiv Itinerary**
- Archaeological 01
- Archaeological 02
- Archaeological 03

Connection of a series of sportive areas and diverse activities.
- Water Sports
- Sportive Nodes



ITENERAIRES AND CONNECTION WITH GIOIOSA GUARDIA



Extreme Sports Itinerary Historical Itinerary Ecological Itinerary Sportive Itinerary **Archaeological 01** Archaeological 02 Archaeological 03

- Starting from Santo Stefano
- Necropoli of classic era
 - Rocca Timpi
 - Il Cippo



ITENERARIES AND CONNECTION WITH GIOIOSA GUARDIA



- Extreme Sports Itinerary
- Historical Itinerary
- Ecological Itinerary
- Sportive Itinerary
- Archaeological 01
- Archaeological 02
- Archaeological 03

Natural Continuation of the first archaeological trail, that starts from Sorrentini



ITENERAIES AND CONNECTION WITH GIOIOSA GUARDIA



Extreme Sports Itinerary

Historical Itinerary

Ecological Itinerary

Sportive Itinerary

Archaeological 01

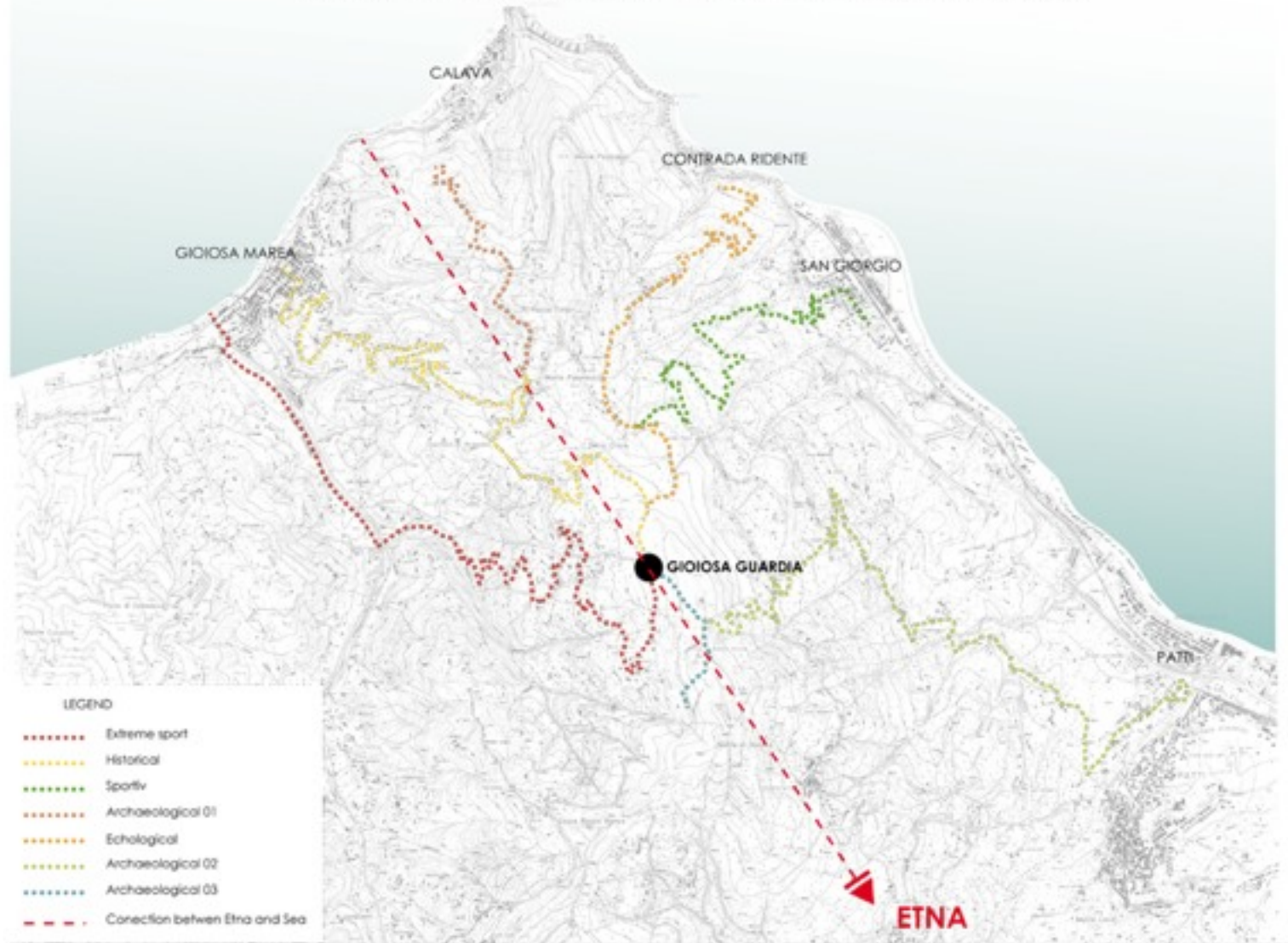
Archaeological 02

Archaeological 03

Third archeological route connecting Gioiosa Guardia and Petri, starting with Roman Villa in Marina and includes Hellenistic and Byzantine traces.



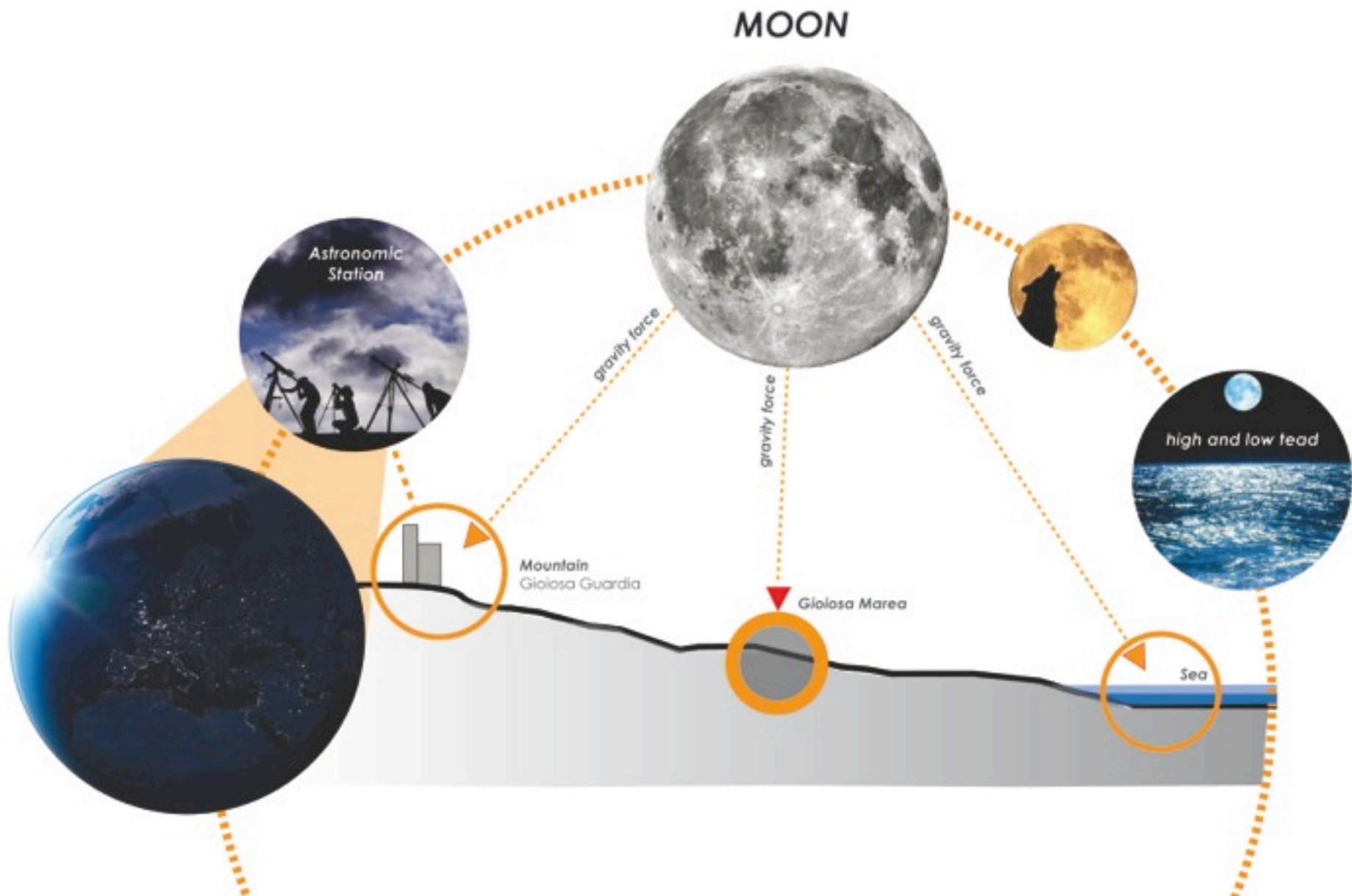
ITENERAIES AND CONNECTION WITH GIOIOSA GUARDIA

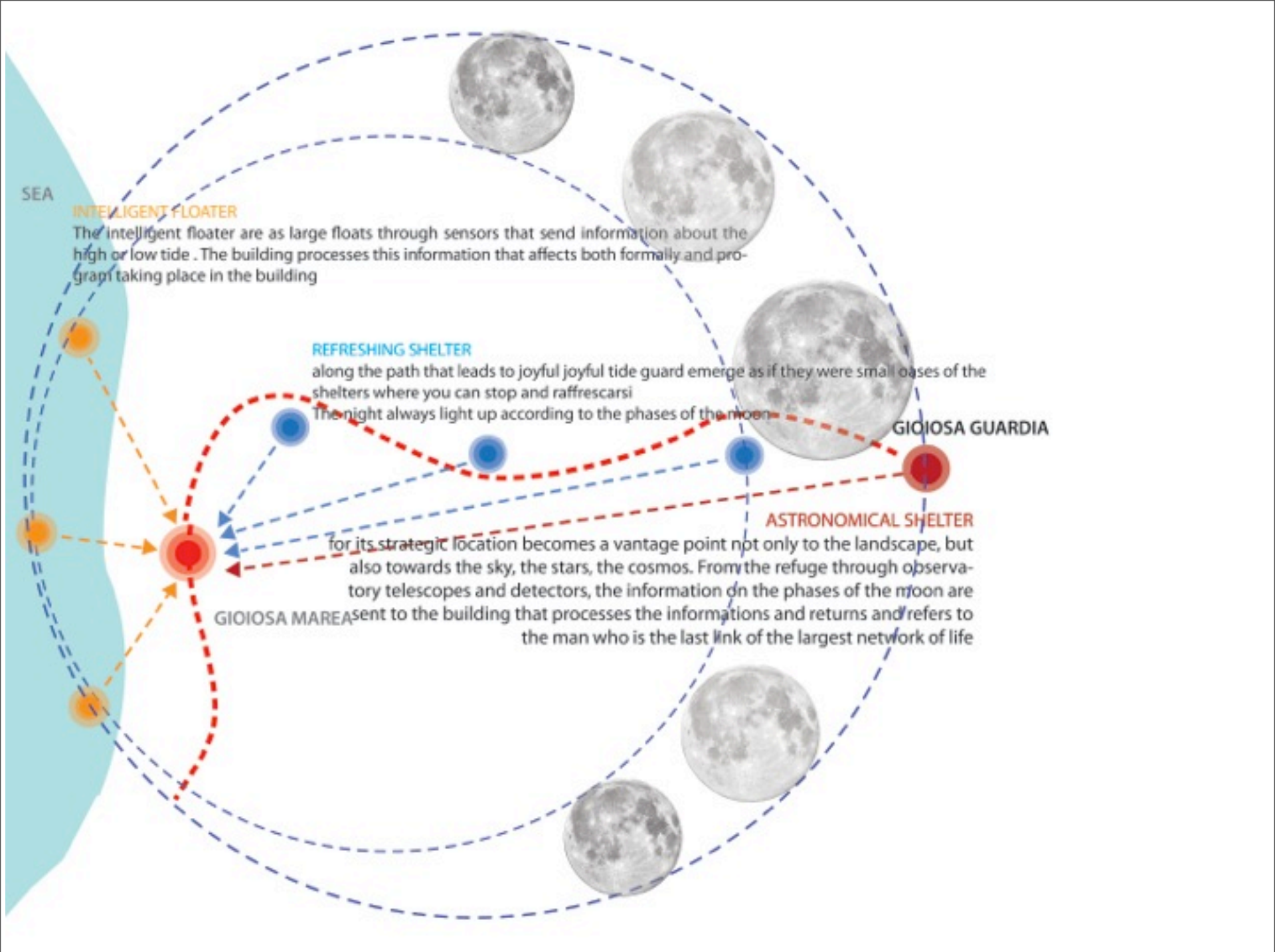


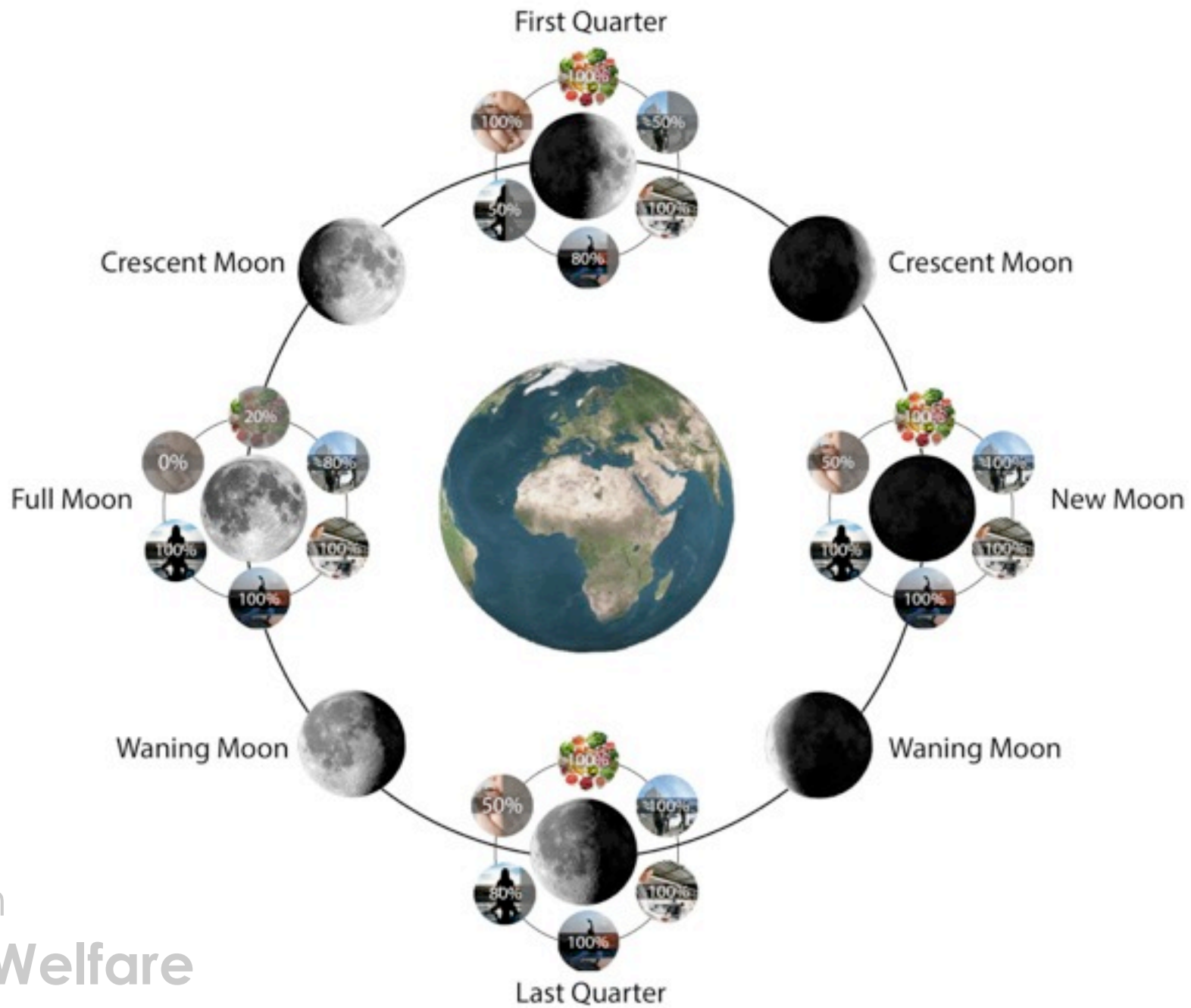
Chapter B
Macro. Micro Architectural and spatial actions



Opportunity

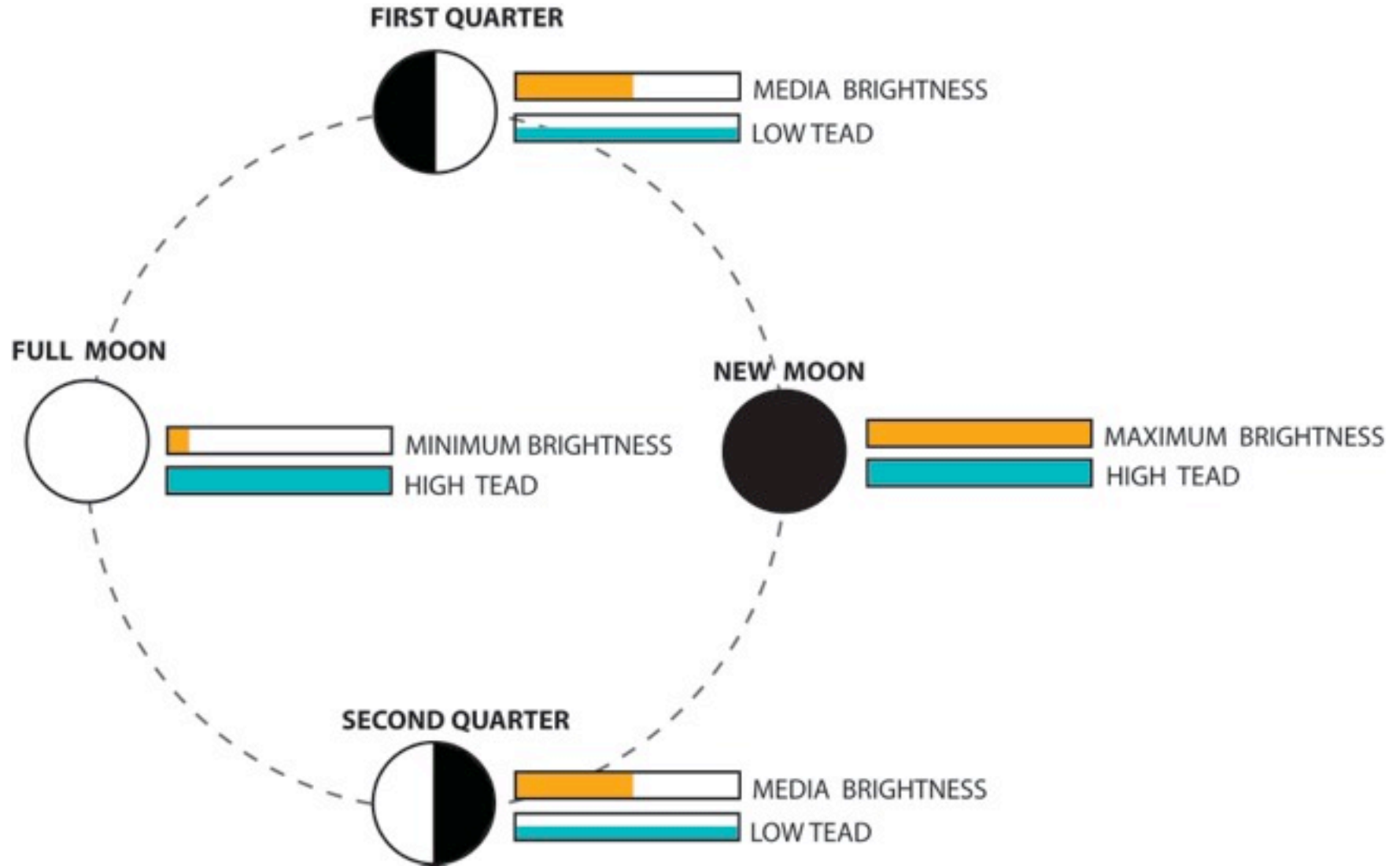


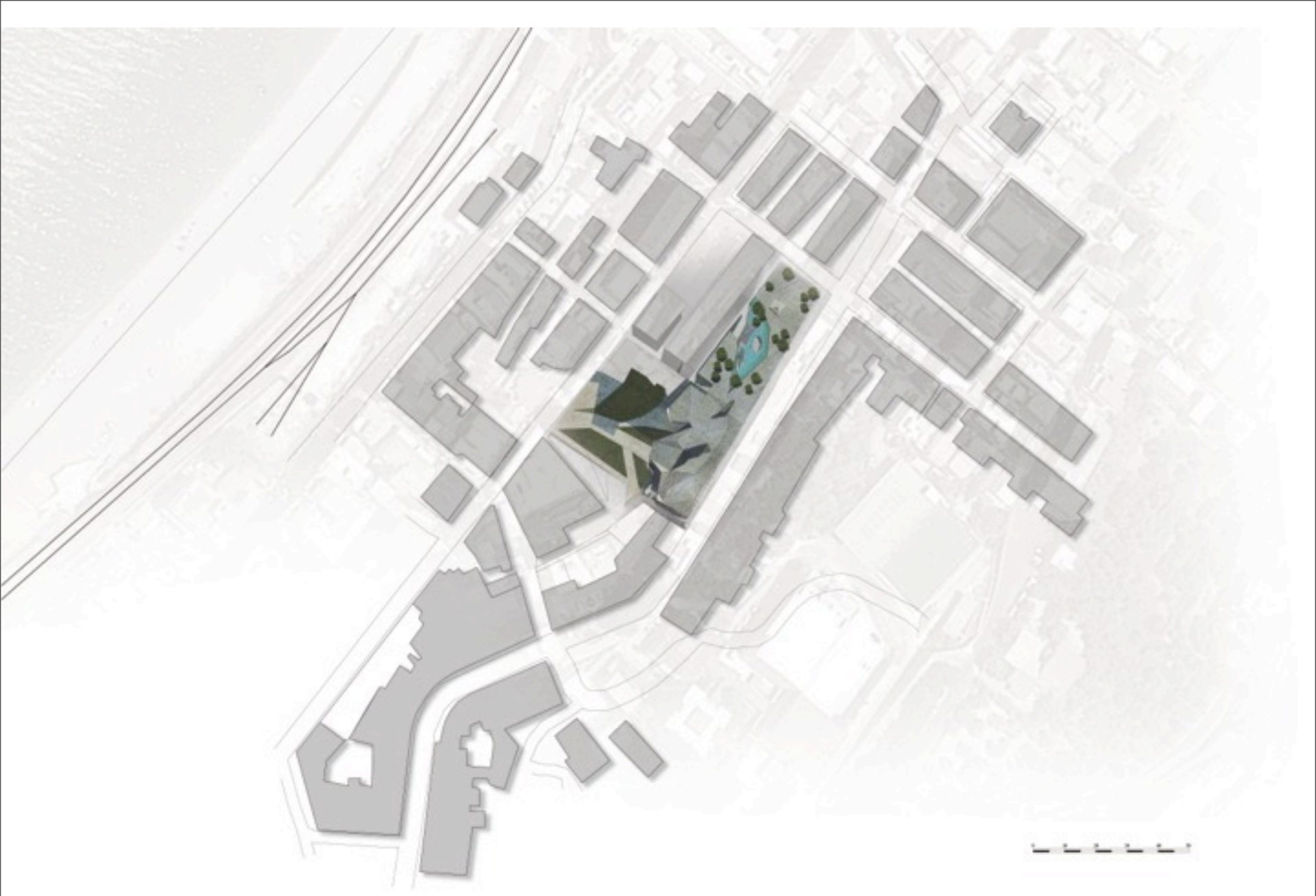




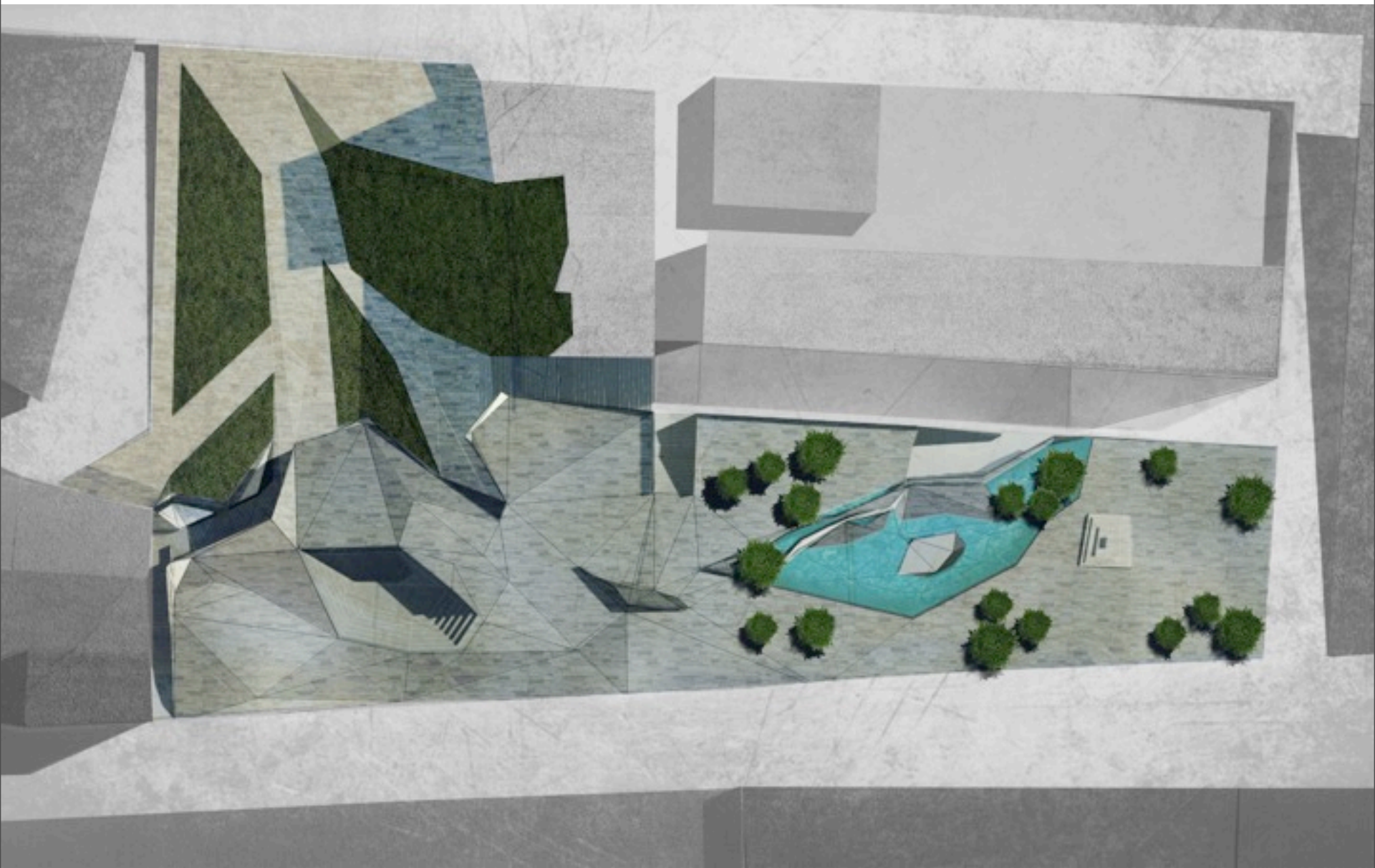
Program
Lunar Welfare

Interaction between, moon – tide, and the Project





Plan 1:2000



Plan 1:500



lunedì 9 settembre 13



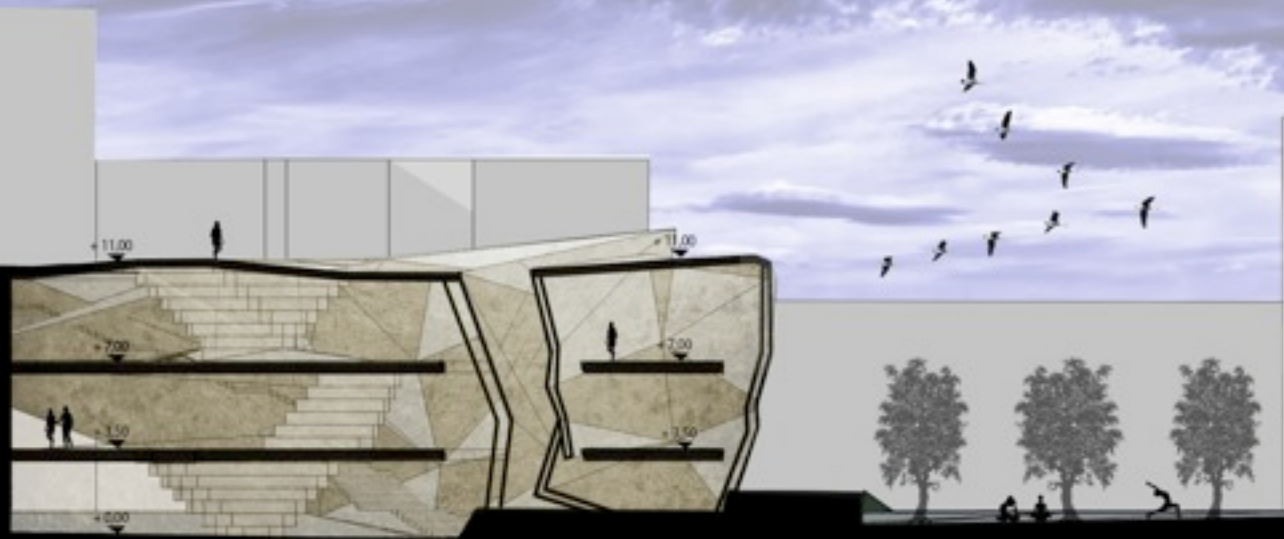
Section 1:500



Materiali:
Gabbioni di Pietra

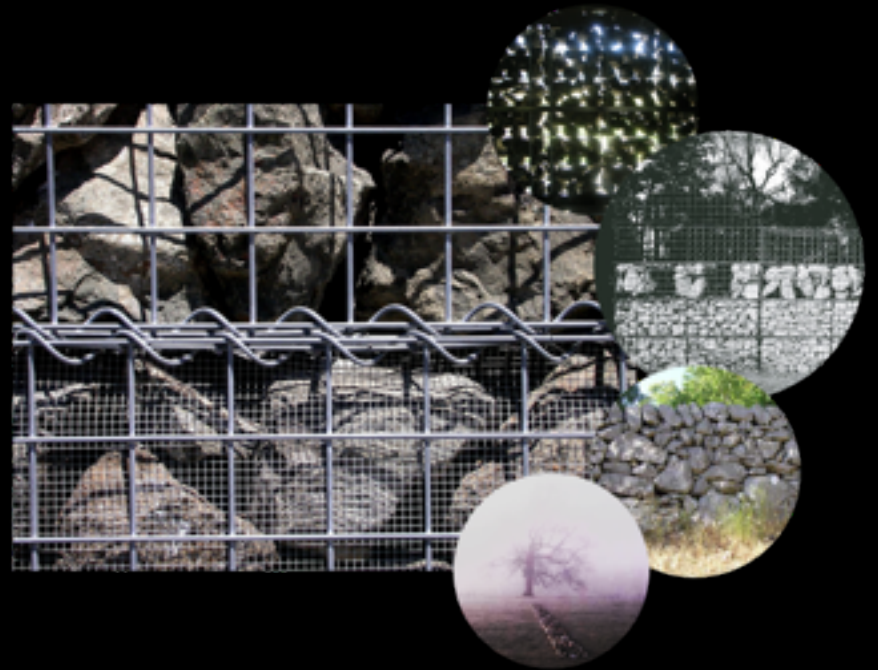
L'uso dei Gabbioni nell'involucro del progetto, richiama il sistema costruttivo di Gioiosa Guardia, ma soprattutto lo spostamento dei materiali da costruzione (le Pietre) avvenuto con l'esodo del 1783 da G.G. a Gioiosa Marea.

Section 1:500

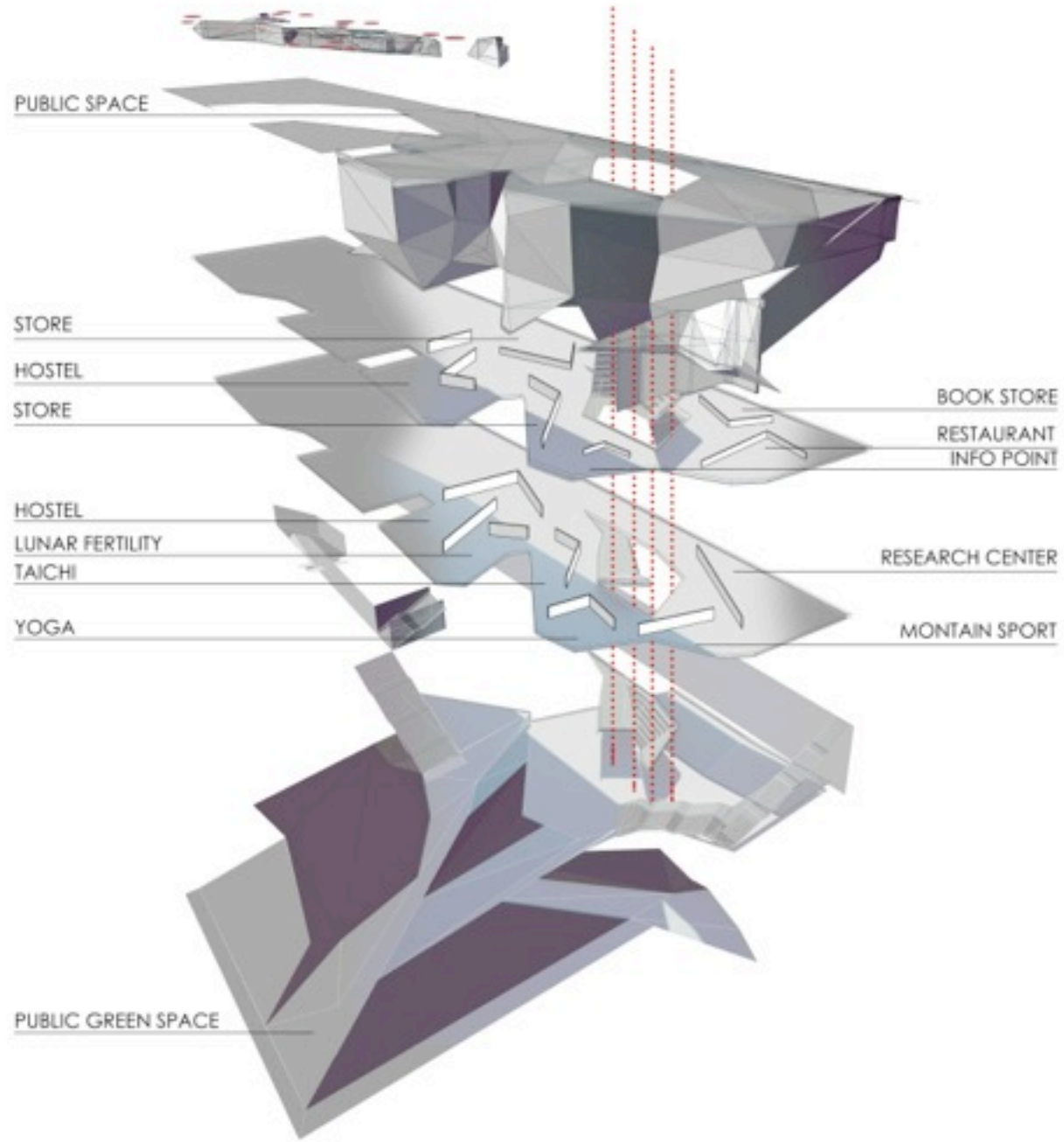


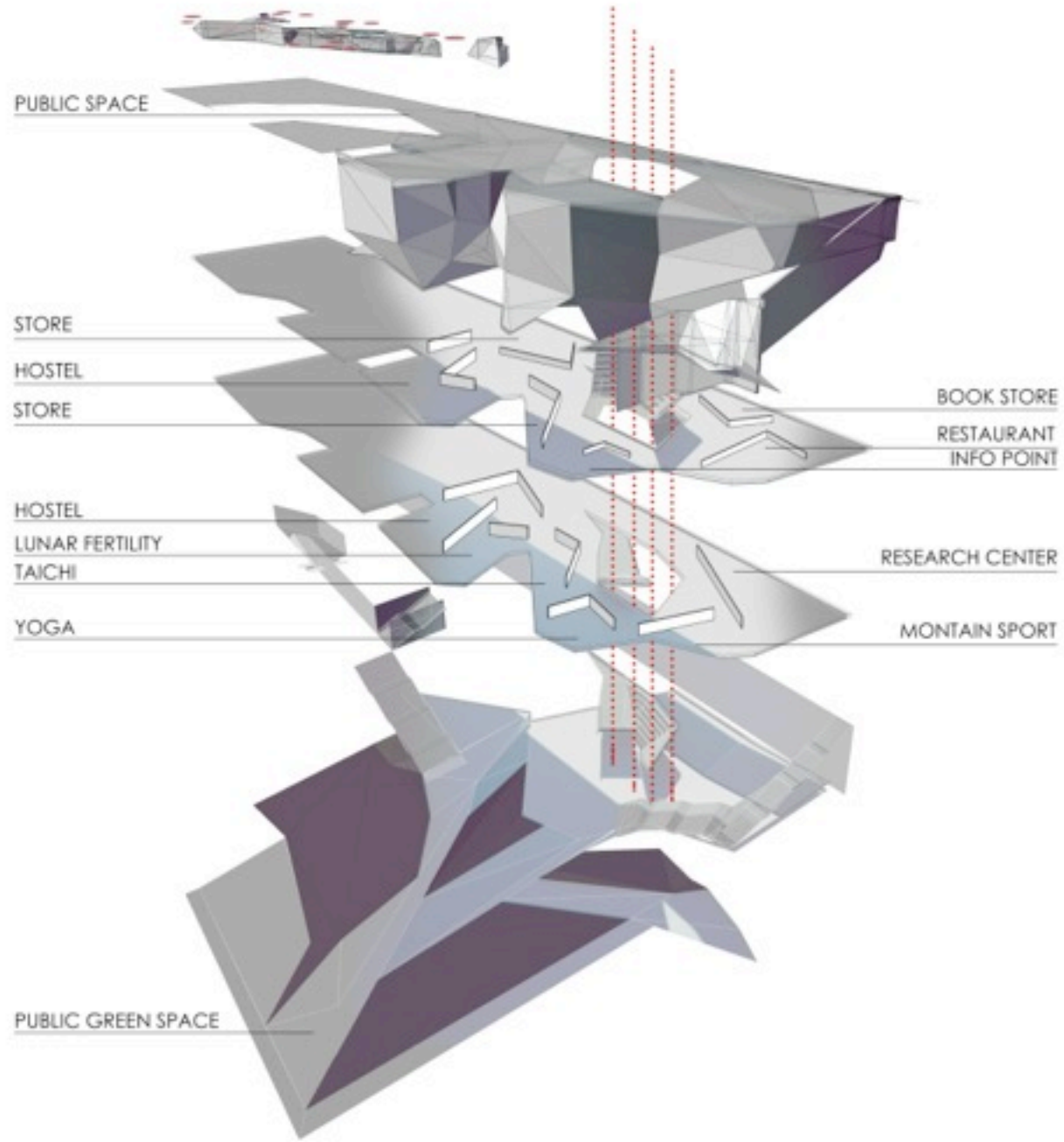
Materiali:
Gabbioni di Pietra

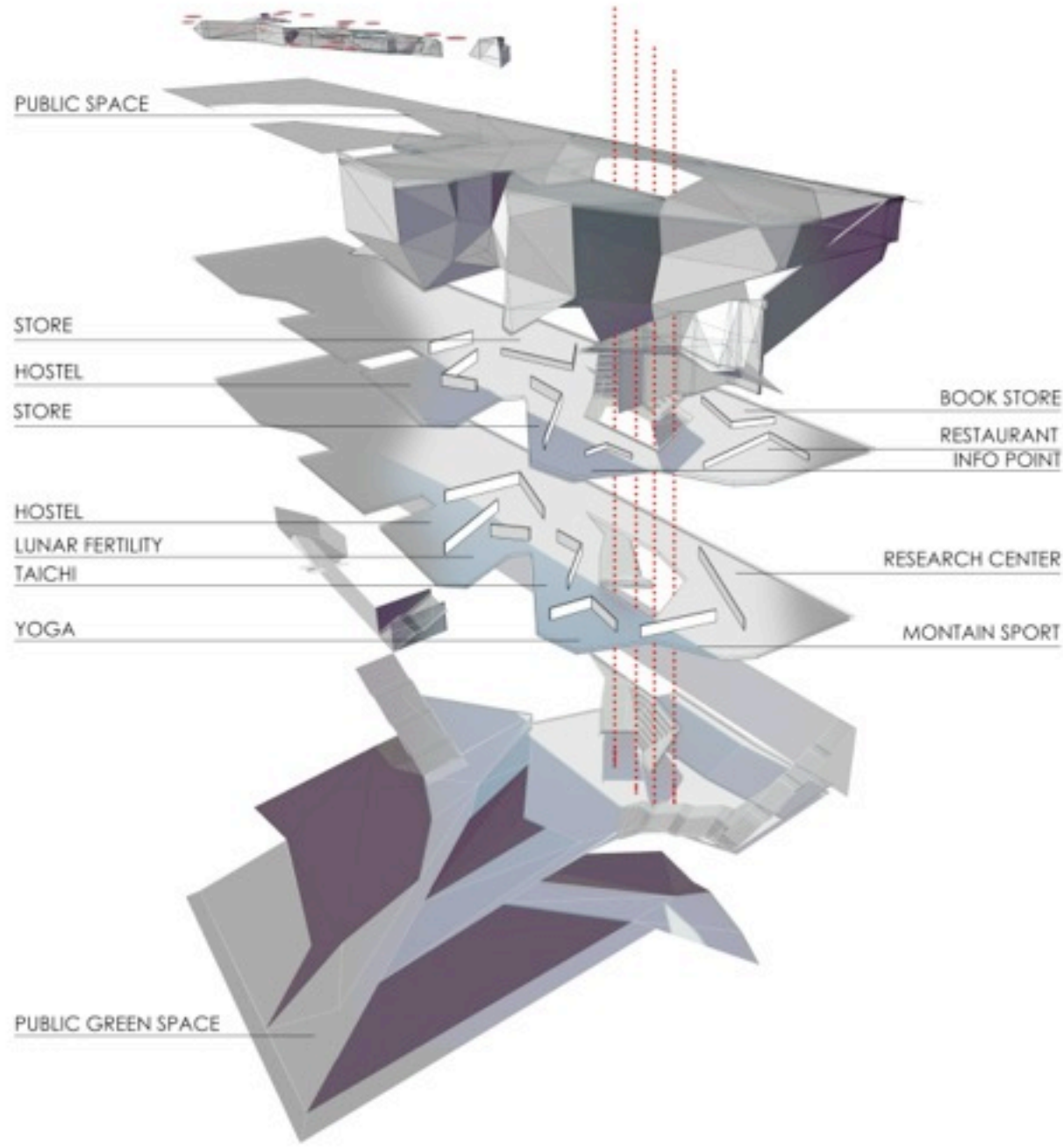
L'uso dei Gabbioni nell'involucro del progetto, richiama il sistema costruttivo di Gioiosa Guardia, ma soprattutto lo spostamento dei materiali da costruzione (le Pietre) avvenuto con l'esodo del 1783 da G.G. a Gioiosa Marea.



Section 1:500







Moon- First Quarter
Light 50%



lunedì 9 settembre 13

Moon- New Moon
Light 100%



lunedì 9 settembre 13

Moon- Last Quarter
Light 50%



Moon- Full Moon
Light 20%



LOW tide



HIGH tide



Chapter C

Micro plug-in design



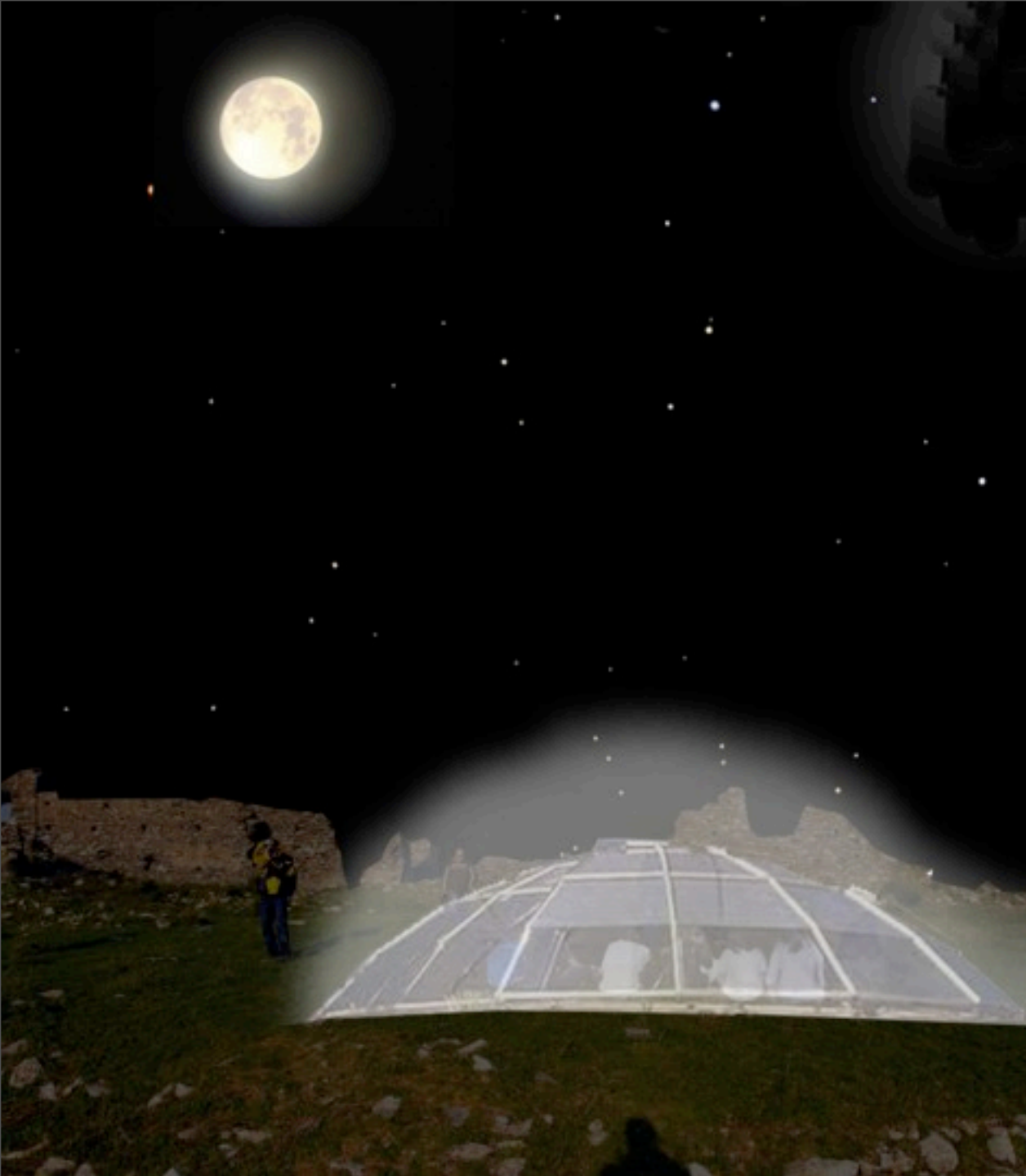
Plug-in design



Earth **PLUG-IN**



lunedì 9 settembre 13



Astronomical shelter



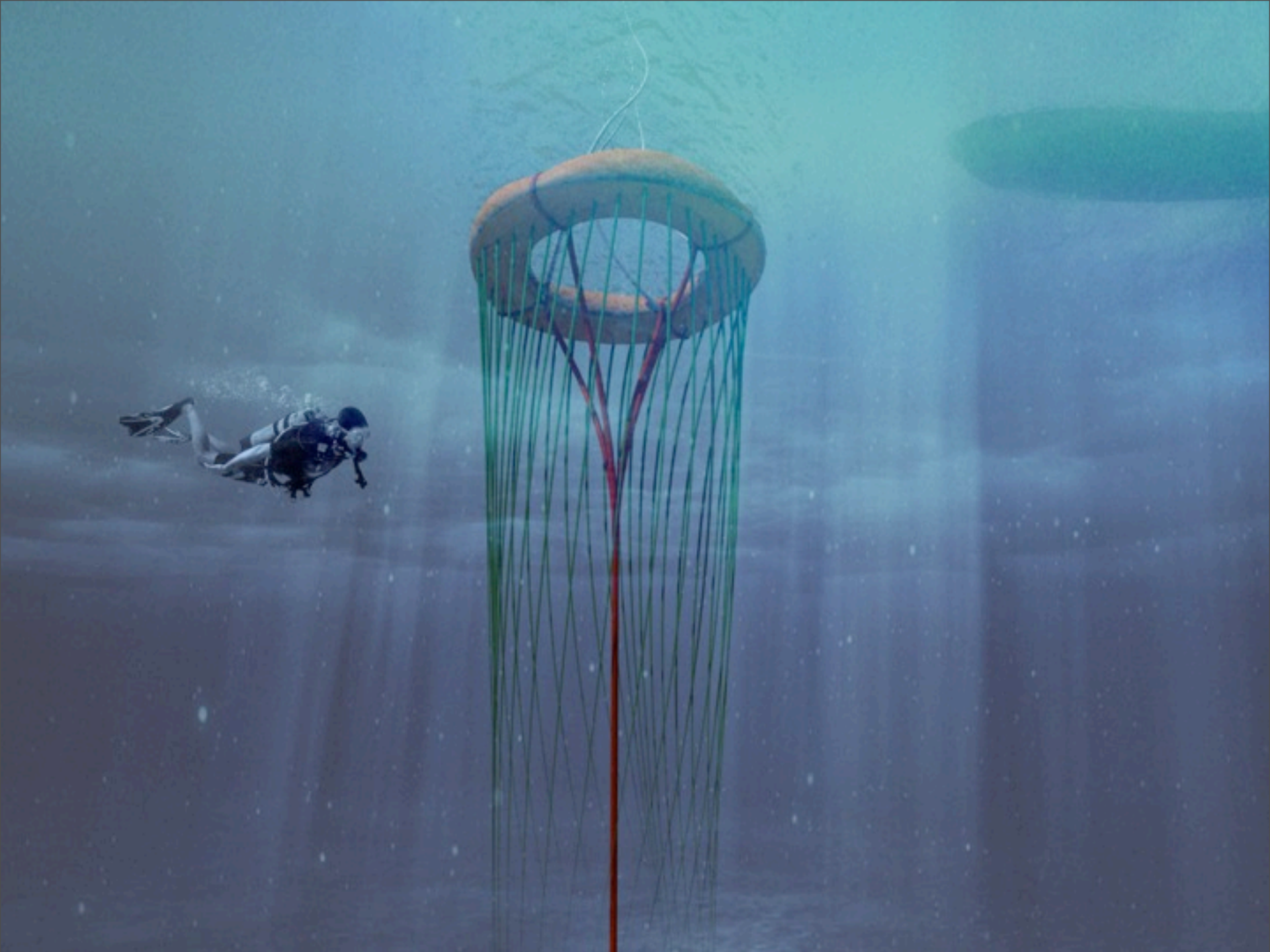
Refreshing Shelter







Sea **PLUG-IN**





ANTENNA

The antenna transmits the information gathered by the sensors to the research center

FLOATER

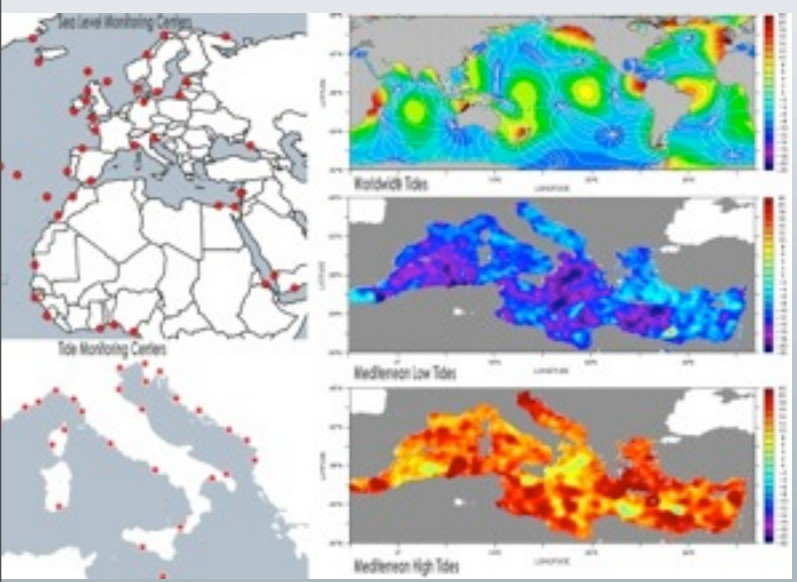
The float also contains the sensors and data processing devices

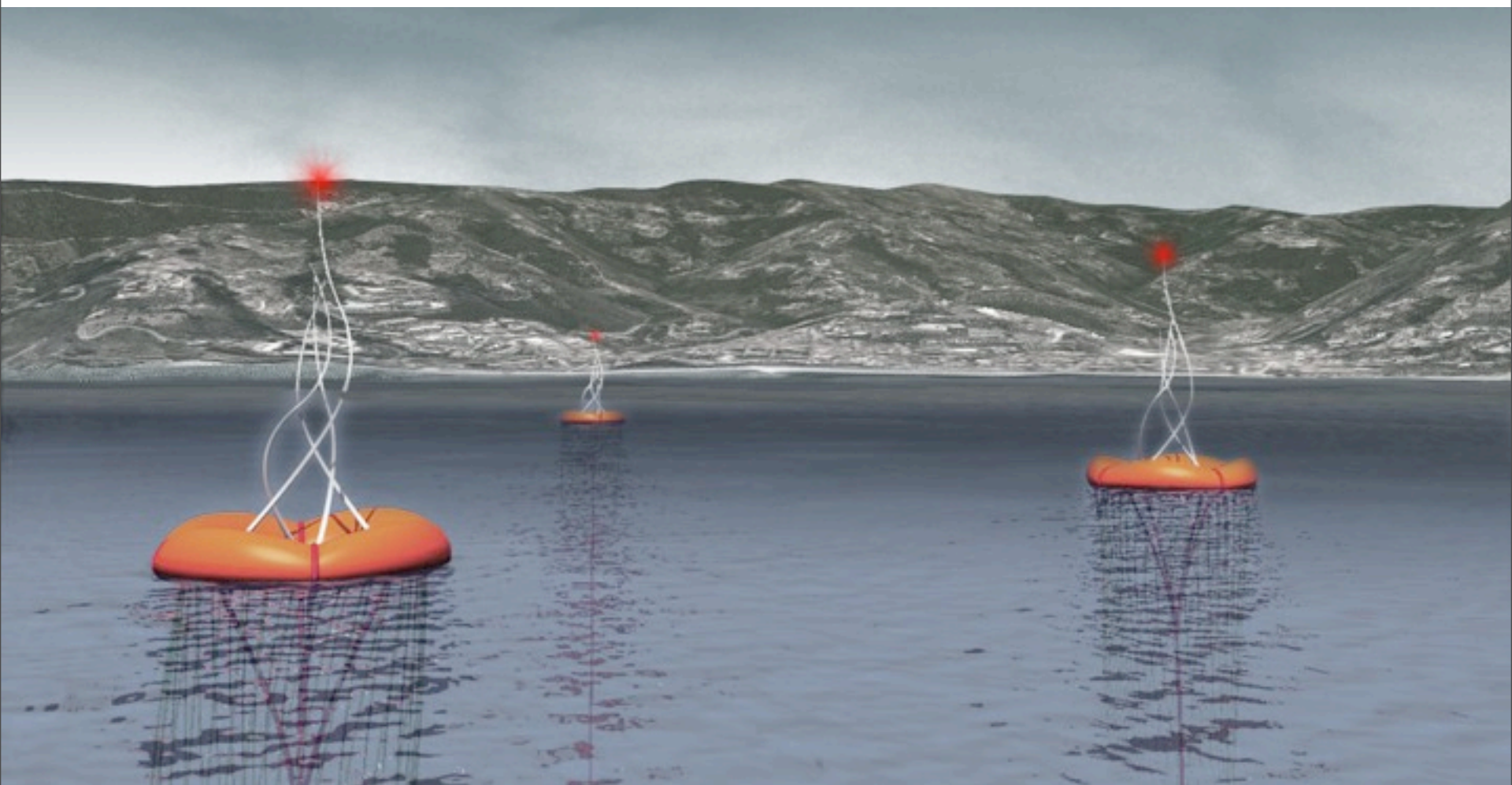
ALGAE SUPPORT STRUCTURE

The algae support structure provides the physical support to growth of the algae colonies that after being harvested will be used as a medical treatment in the center

TIE-BEAM

The tie-beam anchors the buoy to the sea bed.







...thanks
to all